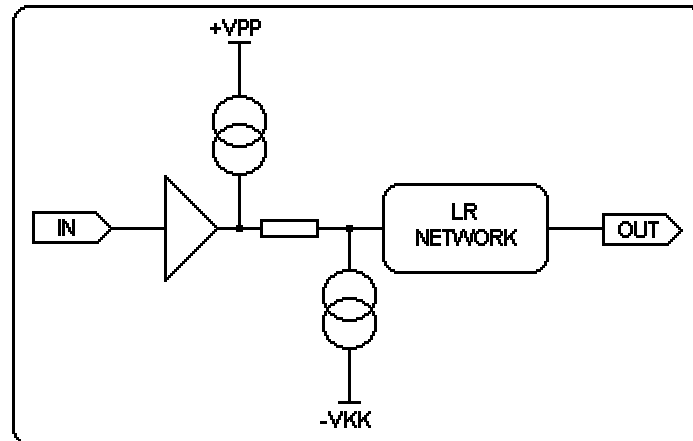


## LR (Inductor, Resistor) RIAA Module LR-01

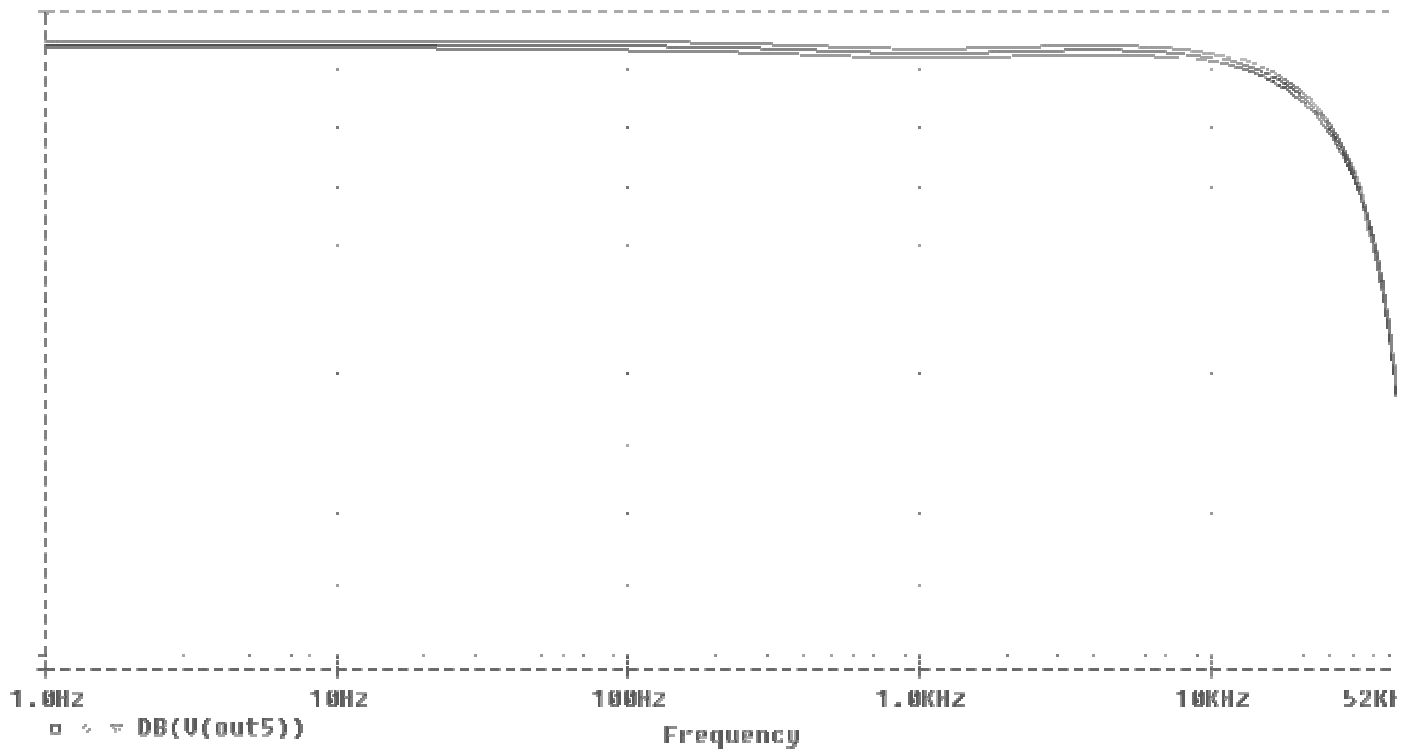
*Inductors/Resistor network used for High Quality, High Accuracy Phono Preamp designs in Vacuum Tube or Solid State Technology. Two LR-01 units are required for a stereo phono preamplifier. LR-01 contains an input driver able to make the unit insensitive to external driving impedance, a sink/source current combination for a perfect DC, low offset, high sound quality coupling and a cascade LR network. Unit requires two external, dual power supplies, moderately stable. LR-01 cannot be used in SPLIT RIAA designs.*



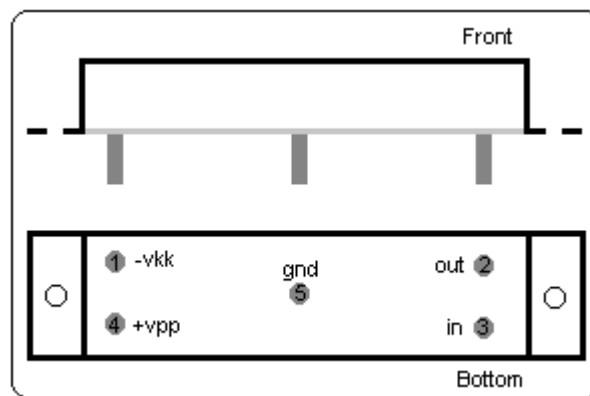
**Fig. 1 Block Diagram of the PAEng LR-01 RIAA Module**

### Characteristics

Input Impedance	2.14k $\Omega$ <sub>min</sub> @ 1kHz (-40°C)		
Output Impedance	16k $\Omega$ <sub>max</sub> @ 1kHz		
BandWidth	29.8kHz		
Accuracy	$\pm 0.133$ dB (-40°C)	$\pm 0.115$ dB (30°C)	$\pm 0.092$ (100°C)
Power Consuption	467mW		
Gain	-20.4dB @ 1kHz		
PSRR	43dB		
Input Voltage	5V <sub>rms</sub> <sub>max</sub>		
THD	0.1% MAX @ 100°C		
Output Voltage Offset	$\pm 19$ mV typical		

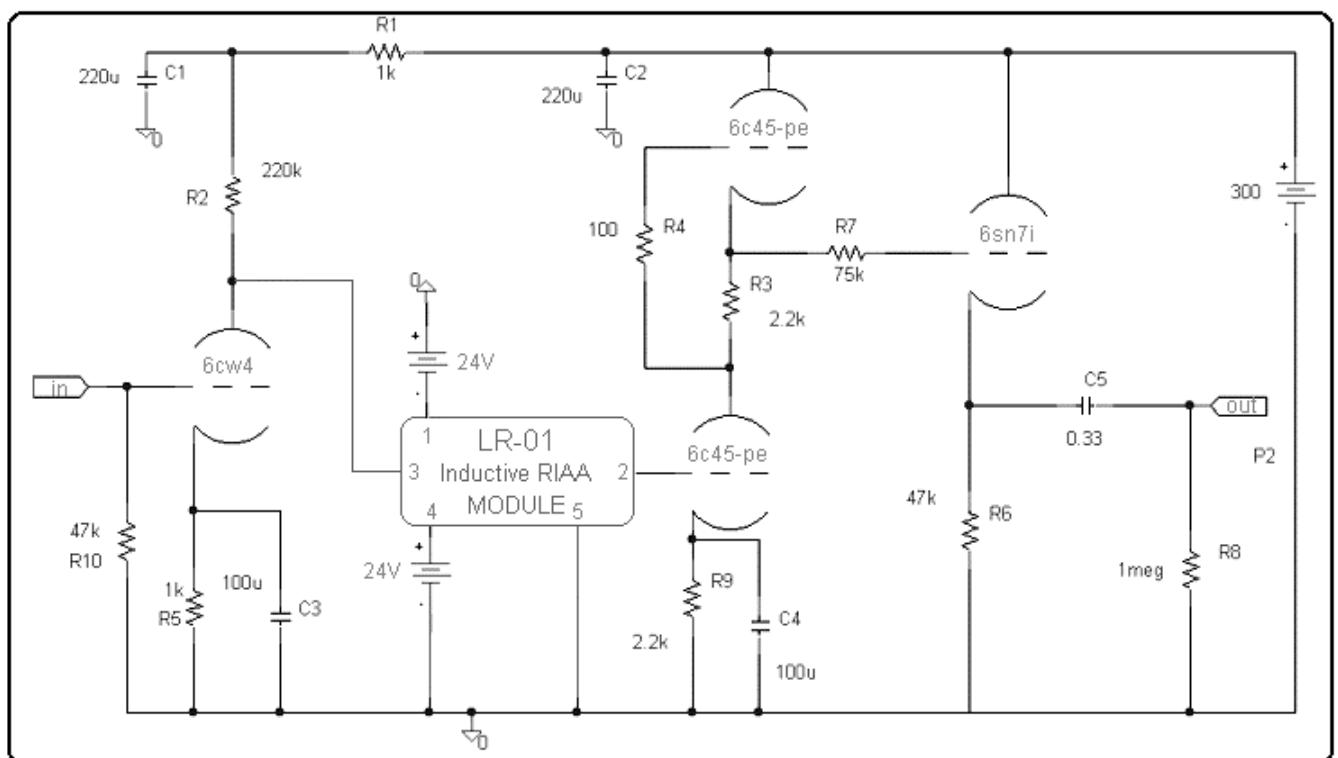


**Fig.2 Simulated Response of LR-01 with Inverse RIAA network (Y-scale 0.2dB/DIV)**



**Fig 3 Mechanicals & Pinout (DRAFT)**

**LR-01 & TLR Modules are available under request.**



### Fig.6 Application Example