

DESCRIZIONE SIDs (ROTTHE DI TRANSIZIONE)**SIDs DESCRIPTION (TRANSITION ROUTES)**

BANKO 7M
(A discrezione ATC/ATC discretion)

Su SIRLO virare a destra per intercettare e seguire RDL 135 CSL VOR per CSL VOR da lasciare su RDL 315 fino ad intercettare e seguire RDL/QDR 328 TOP VOR/NDB, quindi procedere via ADISO-BANKO.

Over SIRLO turn right until join RDL 135 CSL VOR inbound to CSL VOR. Leave CSL VOR on RDL 315 until join RDL/QDR 328 TOP VOR/NDB, then proceed via ADISO-BANKO.

MCA/MCL: fine virata/end of turn (INT RDL 135 CSL VOR), 6000FT; RDL 135/6NM CSL VOR/DME, FL110; RDL 315/5NM CSL VOR/DME, FL150; RDL/QDR 328/30NM TOP VOR/NDB/DME (RDL/QDR 328 TOP VOR/NDB/10NM CSL DME), FL180/190 in dipendenza di Ginevra QNH/depending on Geneve QNH.

BANKO 7L
(A discrezione ATC/ATC discretion)

Procedere via TOP VOR/NDB-ADISO-BANKO.

Proceed via TOP VOR/NDB-ADISO-BANKO.

MCL: BARBY, FL110; RDL/QDR 328/25NM TOP VOR/DME (RDL/QDR 328 TOP VOR/NDB/6NM CSL DME), FL150; RDL/QDR 328/30NM TOP VOR/NDB/DME (RDL/QDR 328 TOP VOR/NDB/10NM CSL DME), FL180/190 in dipendenza di Ginevra QNH/depending on Geneve QNH.

MATOG 7M

Su SIRLO virare a destra per intercettare e seguire RDL 135 CSL VOR fino a 6NM CSL DME, quindi virare a destra per intercettare e seguire RDL/QDR 338 TOP VOR/NDB per il punto MATOG, quindi virare a sinistra su rotta 320° per il punto BANKO.

Over SIRLO turn right until join RDL 135 CSL VOR until 6NM CSL DME, then turn right until join RDL/QDR 338 TOP VOR/NDB inbound to point MATOG, then turn left on track 320° inbound to point BANKO.

MCA/MCL: fine virata/end of turn (INT RDL 135 CSL VOR), 6000FT; RDL 135/6NM CSL VOR/DME, FL110; RDL/QDR 338/25NM TOP VOR/NDB/DME (RDL/QDR 338 TOP VOR/NDB/5NM CSL DME), FL150; MATOG (RDL/QDR 338/30NM TOP VOR/NDB/DME, FL180/190 in dipendenza di Ginevra QNH/depending on Geneve QNH.

MATOG 7L

Procedere via TOP VOR/NDB-MATOG-BANKO.

Proceed via TOP VOR/NDB-MATOG-BANKO.

MCL: RDL/QDR 338/13NM TOP VOR/DME (RDL/QDR 338 TOP VOR/NDB/7NM CSL DME), FL110; RDL/QDR 338/25NM TOP VOR/DME (RDL/QDR 338 TOP VOR/NDB/5NM CSL DME), FL150; MATOG (RDL/QDR 338/30NM TOP VOR/DME), FL180/190 in dipendenza di Ginevra QNH/depending on Geneve QNH.

CANNE 7M

Procedere su RDL 105 CSL VOR (RDL 286 VOG VOR) fino al punto TONDA, quindi virare a sinistra per intercettare e seguire RDL 214 MAL VOR per MAL VOR da lasciare su RDL 011 per il punto CANNE.

Proceed on RDL 105 CSL VOR (RDL 286 VOG VOR) until point TONDA, then turn left until join RDL 214 MAL VOR inbound to MAL VOR. Leave MAL VOR on RDL 011 inbound to CANNE.

MCL: TONDA, FL90; MAL VOR, FL120;
CANNE, FL140/150 in dipendenza di Zurigo QNH/depending on Zurich QNH.

CANNE 7L

Procedere via TOP VOR/NDB-TONDA-MAL VOR-CANNE.

Proceed via TOP VOR/NDB-TONDA-MAL VOR-CANNE.

MCL: TONDA, FL90; MAL VOR, FL120;
CANNE, FL140/150 in dipendenza di Zurigo QNH/depending on Zurich QNH.

ABESI 7M

Procedere su RDL 105 CSL VOR (RDL 286 VOG VOR) fino al punto TONDA, quindi virare a sinistra per intercettare e seguire RDL 214 MAL VOR per MAL VOR da lasciare su RDL 022 per il punto ABESI.

Proceed on RDL 105 CSL VOR (RDL 286 VOG VOR) until point TONDA, then turn left until join RDL 214 MAL VOR inbound to MAL VOR. Leave MAL VOR on RDL 022 inbound to point ABESI.

MCL: TONDA, FL90; MAL VOR, FL120;
ABESI, FL140/150 in dipendenza di Zurigo QNH/depending on Zurich QNH.

ABESI 7L

Procedere via TOP VOR/NDB-TONDA-MAL VOR-ABESI.

Proceed via TOP VOR/NDB-TONDA-MAL VOR-ABESI.

MCL: TONDA, FL90; MAL VOR, FL120;
ABESI, FL140/150 in dipendenza di Zurigo QNH/depending on Zurich QNH.

VOG 7M

Procedere su RDL 105 CSL VOR (RDL 286 VOG VOR) via TONDA-VOG VOR/NDB.

Proceed on RDL 105 CSL VOR (RDL 286 VOG VOR) via TONDA-VOG VOR/NDB.

MCL: TONDA, FL90; VOG VOR/NDB, come per il successivo tratto di rotta/as for following enroute segment.

VOG 7L

Procedere via TOP VOR/NDB-VOG VOR/NDB.

Proceed via TOP VOR/NDB-VOG VOR/NDB.

MCL: MIRAX, FL90; VOG VOR/NDB, come per il successivo tratto di rotta/as for following enroute segment.

GEN 7M

Procedere su RDL 105 CSL VOR (RDL 286 VOG VOR) fino al punto TONDA, quindi virare a destra per intercettare e seguire RDL 319 GEN VOR e procedere via TONDA-GEN VOR/NDB.

Proceed on RDL 105 CSL VOR (RDL 286 VOG VOR) until point TONDA, then turn right until join RDL 319 GEN VOR and proceed via TONDA-GEN VOR/NDB.

MCL: TONDA, FL90; GEN VOR/NDB, come per il successivo tratto di rotta/as for following enroute segment.

GEN 7L

Procedere via TOP VOR/NDB-GEN VOR/NDB.

Proceed via TOP VOR/NDB-GEN VOR/NDB.

MCL: ASTOR, FL90; GEN VOR/NDB, come per il successivo tratto di rotta/as for following enroute segment.

LAGEN 7M

Procedere su RDL 105 CSL VOR (RDL 286 VOG VOR) via TONDA, quindi, a 46NM CSL DME (12NM VOG DME) virare a destra per intercettare e seguire RDL 197 SRN VOR per il punto LAGEN.

Proceed on RDL 105 CSL VOR (RDL 286 VOG VOR) via TONDA, then, at 46NM CSL DME (12NM VOG DME) turn right until join RDL 197 SRN VOR inbound to point LAGEN.

MCL: TONDA, FL90; LAGEN, FL110.

LAGEN 7L

Procedere via TOP VOR/NDB-LAGEN (RDL/QDR 140/42NM TOP VOR/NDB/DME).

Proceed via TOP VOR/NDB-LAGEN (RDL/QDR 140/42NM TOP VOR/NDB/DME).

MCL: ALEXA, FL90; LAGEN, FL110.

**ABN 7L
(A discrezione ATC/ATC discretion)**

Procedere via TOP VOR/NDB-ABN NDB.

Proceed via TOP VOR/NDB-ABN NDB.

MCL: RDL/QDR 164/30NM TOP VOR/NDB/DME (RDL/QDR 164 TOP VOR/NDB/50NM CSL DME, INT RDL/QDR 164 TOP VOR/NDB/RDL 272 GEN VOR), FL100.

IXUSA 7L

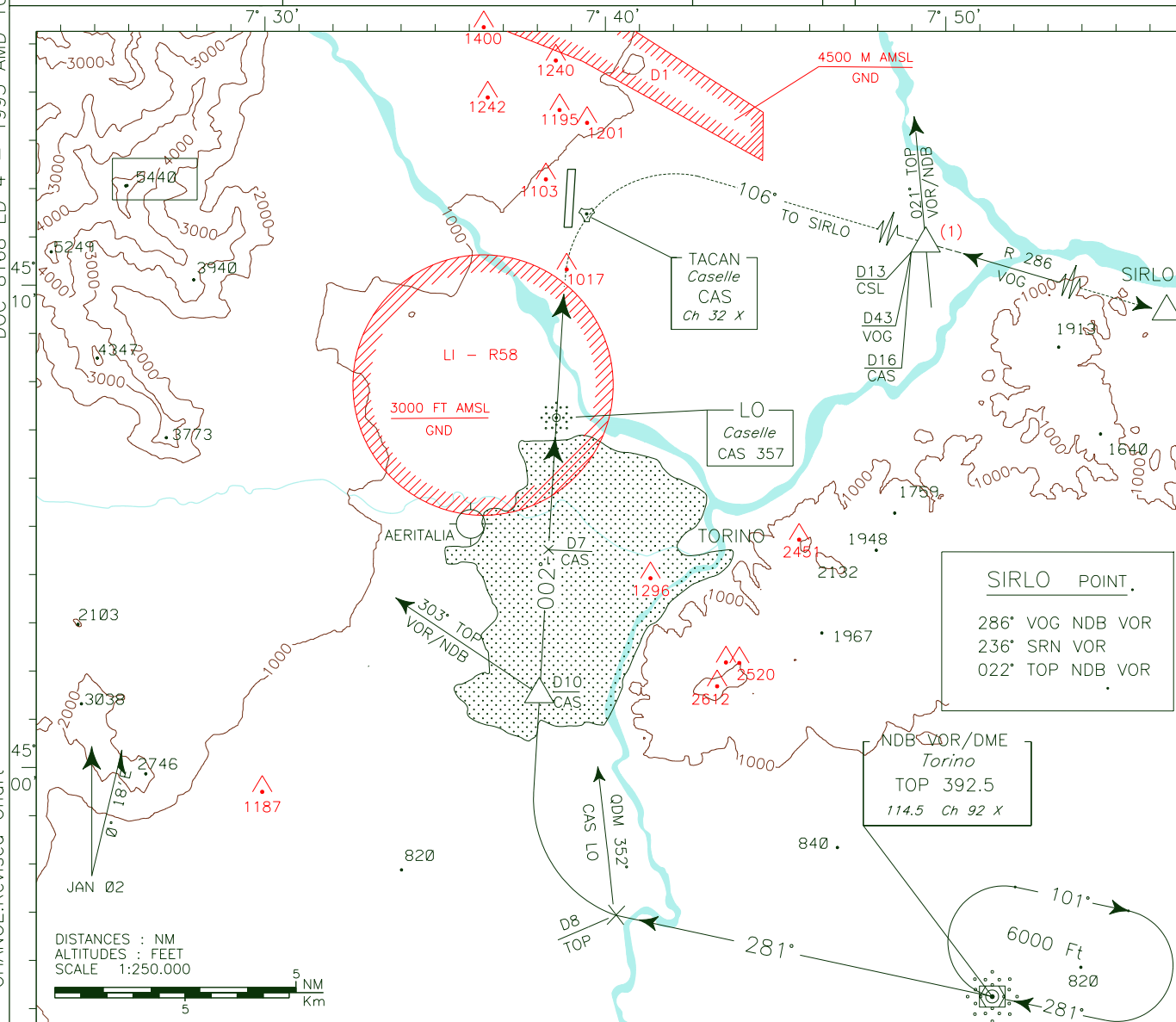
Procedere via TOP VOR/NDB-IXUSA.

Proceed via TOP VOR/NDB-IXUSA.

MCL: RDL/QDR 298/12NM TOP VOR/NDB/DME (RDL 187/12NM CSL VOR/DME), FL130; RDL/QDR 298/25NM TOP VOR/NDB/DME (RDL 244/15NM CSL VOR/DME), FL200.

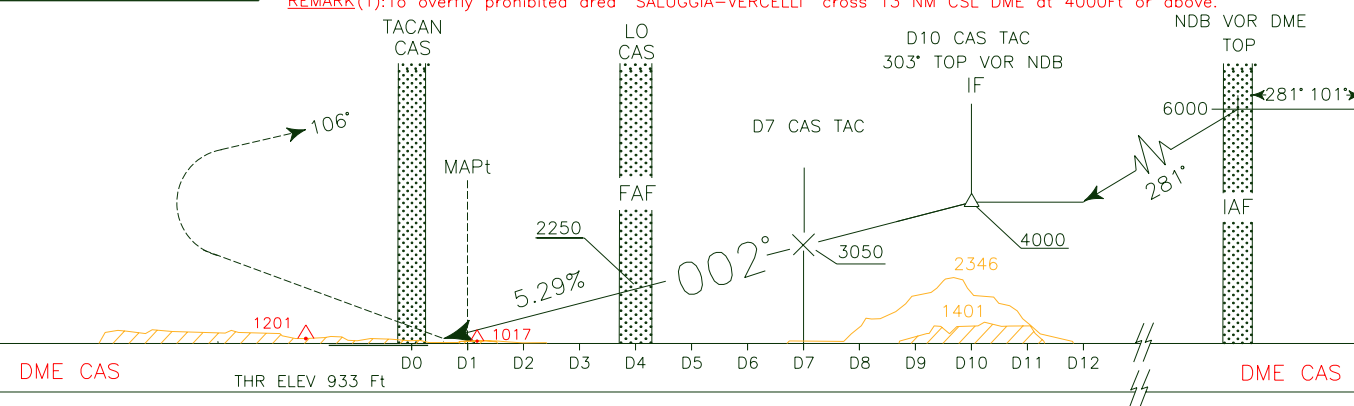
APP	<i>Torino Approach</i>	TWR	<i>Torino Tower</i>	AD ELEV	L I M F	TORINO/CASELLE	
	129.275		118.50	989		LO-P	RWY 36
	(121.10)						



CHANGE:Revised Chart



MISSED APPROACH: Turn right to join RDL 286 VOG VOR (track 106°) to SIRLO point then TOP VOR NDB climbing to 5000 Ft.

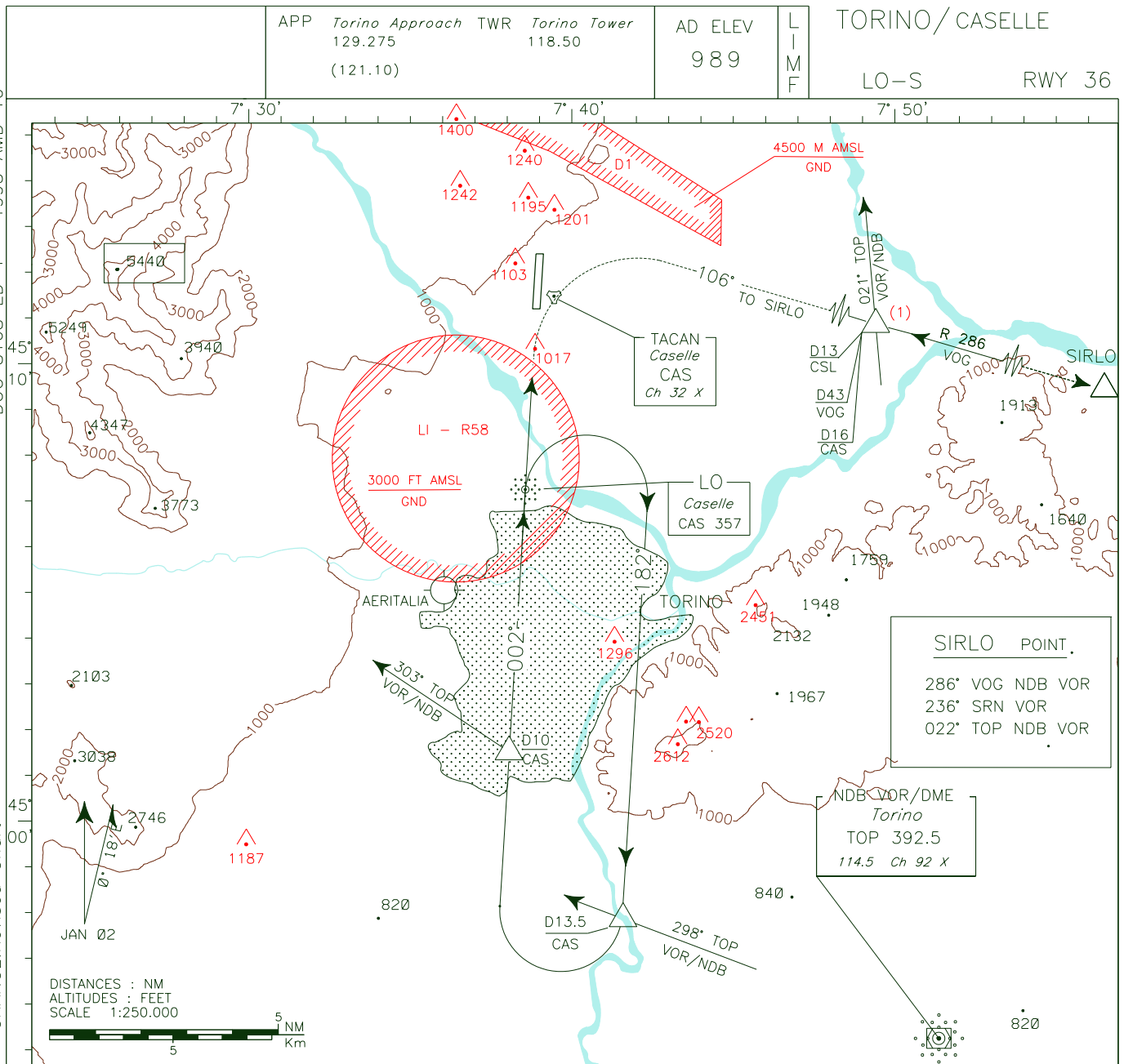
REMARK(1):To overfly prohibited area "SALUGGIA-VERCELLI" cross 13 NM CSL DME at 4000Ft or above.



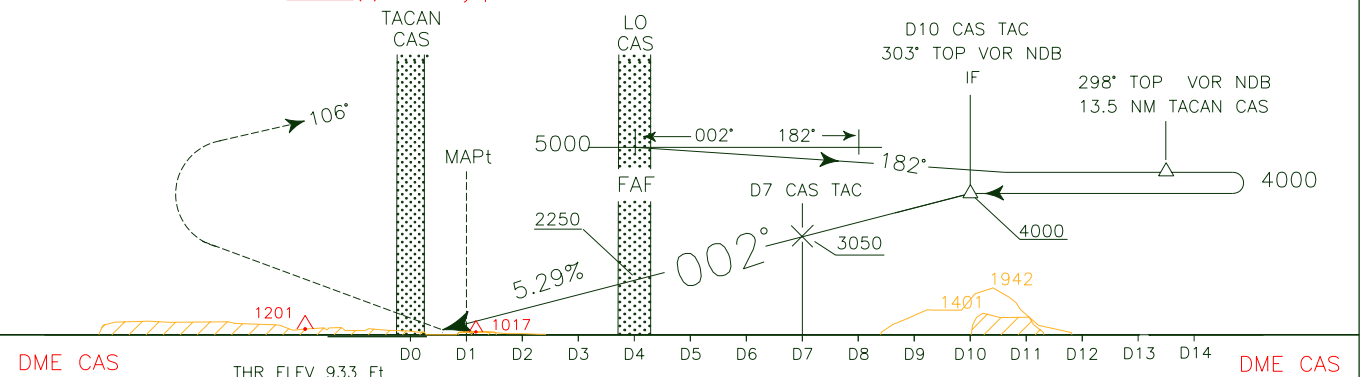
OCA(OCH)		A	B	C	D		GS	FT PER MIN	FAF—MAP	MAP—THR	
STRAIGHT IN APPROACH	LO	1500 (567)							3 NM	0.95 NM	
CIRCLING*		1550 (561)		1750 (761)		*Circling allowed only EAST of RWY					

ICAO - INSTRUMENT APPROACH CHART

DOC 8168 ED 4 - 1993 AMD 10
CHANGE: Revised Chart



TRANSITION ALT 6000
MISSED APPROACH: Turn right to join RDL 286 VOG VOR (track 106°) to SIRLO point then TOP VOR NDB climbing to 5000 Ft.
REMARK(1): To overfly prohibited area "SALUGGIA-VERCELLI" cross 13 NM CSL DME at 4000ft or above.



OCA(OCH)	A	B	C	D
STRAIGHT IN APPROACH	LO	1500 (567)		
CIRCLING *	1550 (561)		1750 (761)	

GS	FT PER MIN	FAF-MAP	MAP-THR	MNM SECT ALT
100	536	1:48	0:34	LO 15400
120	644	1:30	0:28	085 12000 230 3600
140	750	1:17	0:24	
160	857	1:08	0:21	
180	964	1:00	0:19	

N°037/11

ENAV

AIRAC EFFECTIVE date 8 AUG 2002 (A4/02)