

ICAO - INSTRUMENT APPROACH CHART

REMARK(1): Some users on ILS APP reported false loc captures Pilot attention is drawn to pay max caution.
See also AIP RAC 1

APP Torino Approach TWR Torino Tower
129.275 118.50
(121.10)

AD ELEV
989

L
I
M
F

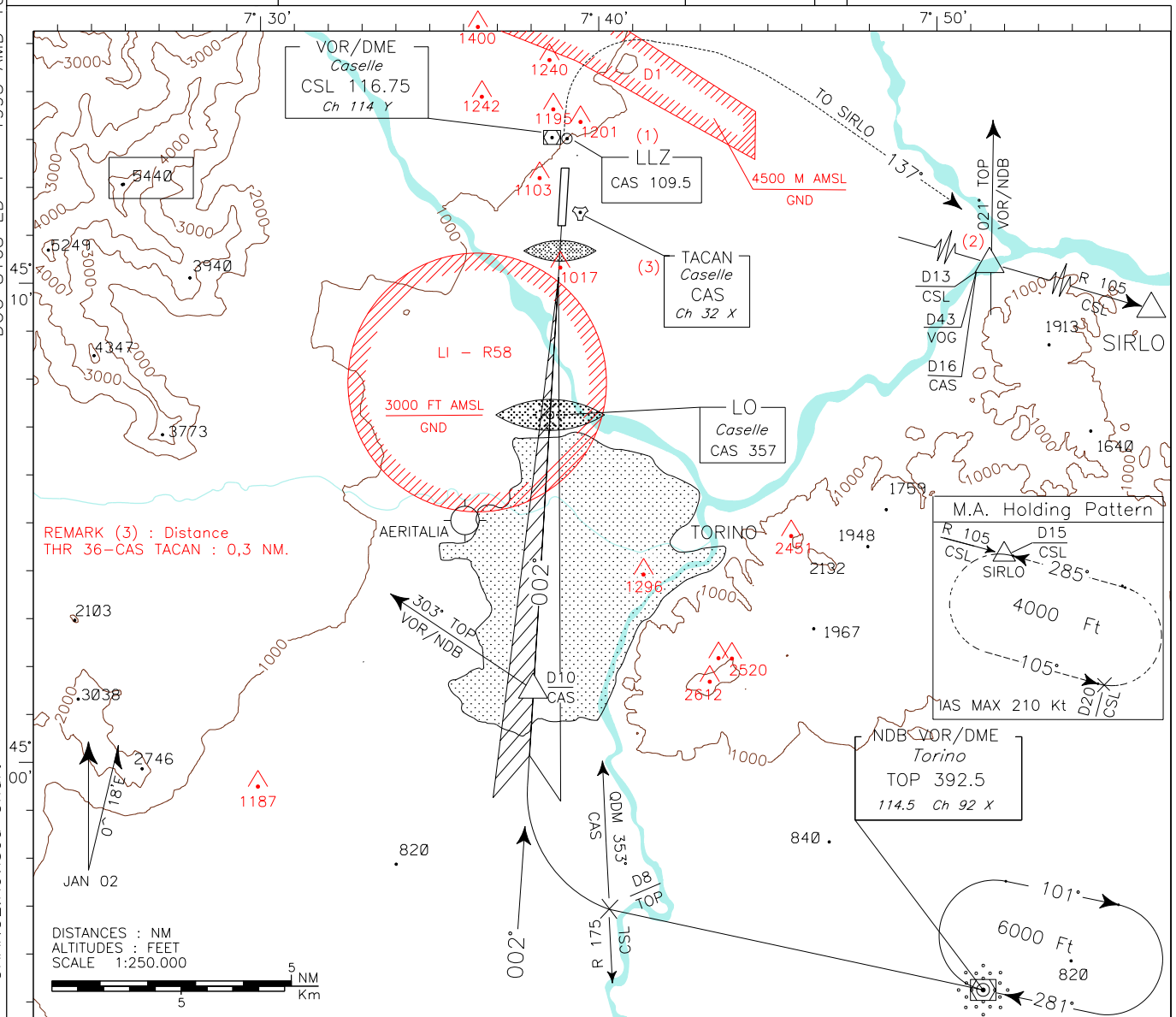
TORINO/CASELLE

ILS-P

RWY 36

DOC 8168 ED 4 - 1993 AMD 10

CHANGE: Revised Chart

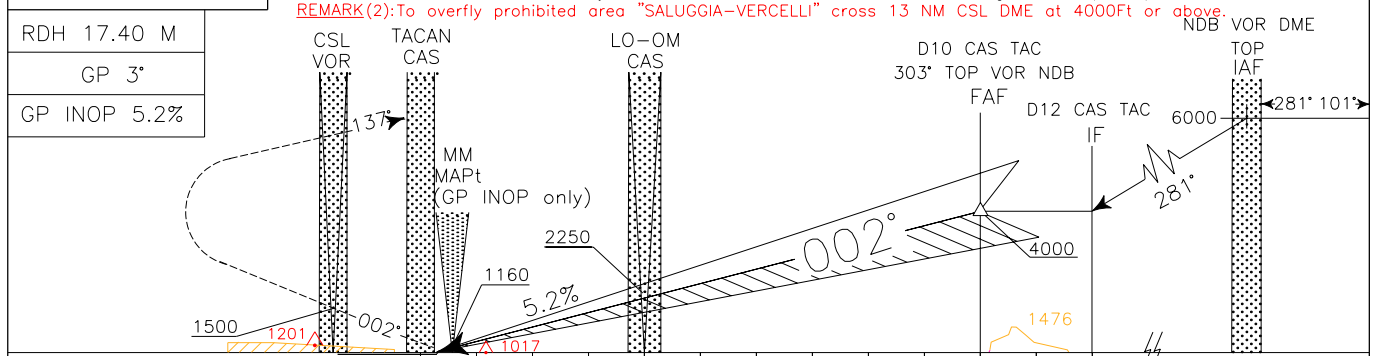


TRANSITION ALT 6000

RDH 17.40 M
GP 3°
GP INOP 5.2%

MISSED APPROACH: Continue on track 002° climbing to 4000 Ft. Leaving 1500 Ft turn right on track 137° to join and follow RDL 105 CSL to M.A. Holding Pattern (SIRLO).

REMARK(2): To overfly prohibited area "SALUGGIA-VERCELLI" cross 13 NM CSL DME at 4000ft or above.



DME CAS												
THR ELEV 933 Ft												
NM	0	1	2	3	4	5	6	7	8	9	10	12

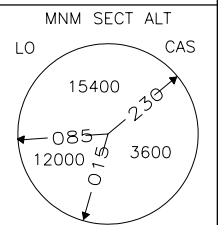
OCA(OCH)	A	B	C	D
ILS 1°	1098 (165)	1110 (177)	1123 (190)	1137 (204)
ILS 2°	995 (62)	1008 (75)	1020 (87)	1040 (107)
GP INOP	1310 (377)			
CIRCLING *	1550 (561)		1750 (761)	

* CIRCLING ALLOWED ONLY EAST OF RWY

NOT ALLOWED

(1) WARNING: TIMING NOT ALLOWED FOR GP INOP

GS	FT PER MIN	OM-MM (1)	MM-THR (1)
100	525	2:03	0:18
120	630	1:43	0:15
140	735	1:28	0:13
160	840	1:17	0:12
180	950	1:08	0:10



ICAO – INSTRUMENT APPROACH CHART

REMARK(1): Some users on ILS APP reported false loc captures. Pilot attention is drawn to pay max caution. See also AIP RAC 1

APP *Torino Approach* TWR *Torino Tower*
129.275 118.50
(121.10)

AD ELEV
989

L
I
M
F

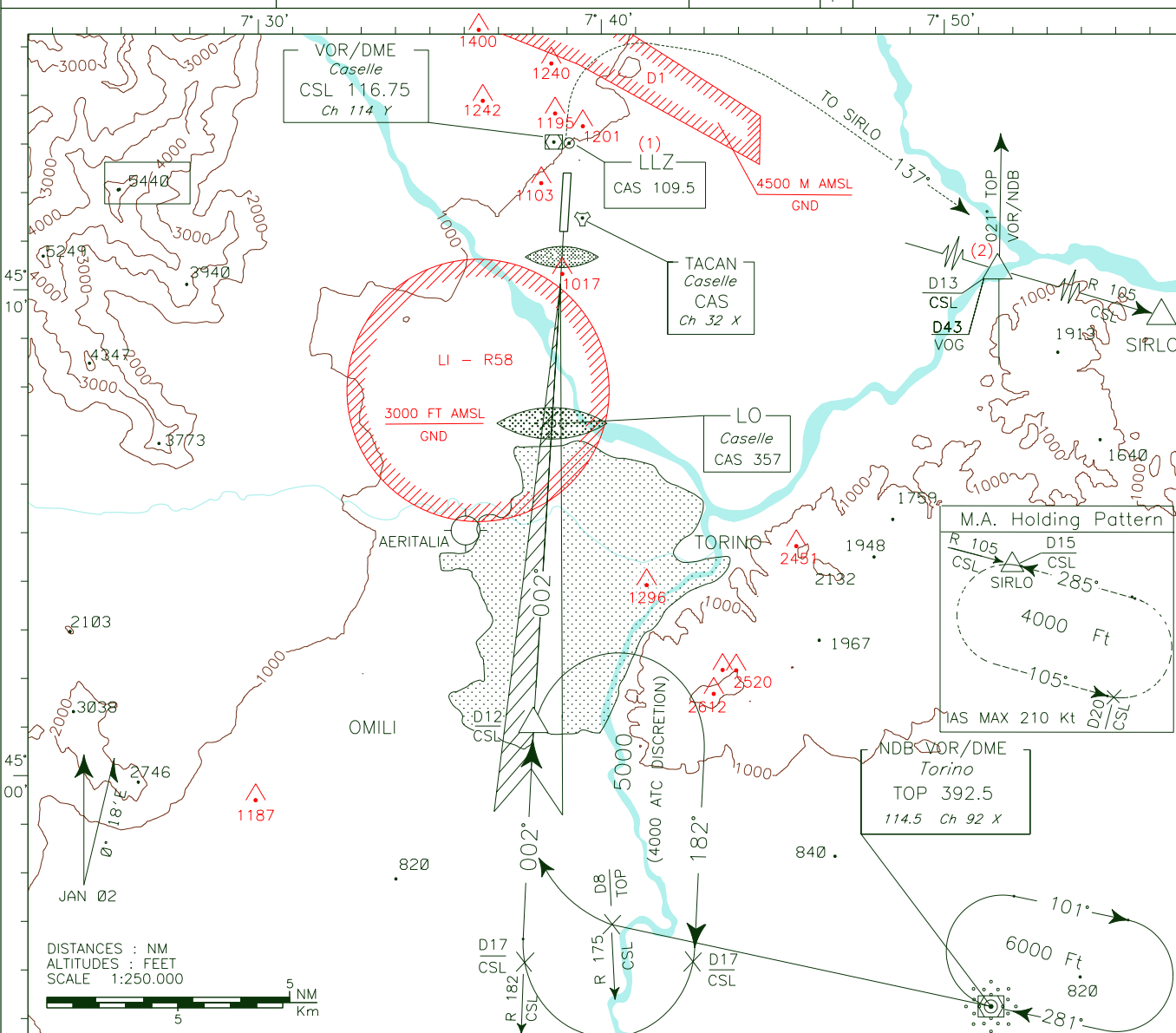
TORINO/CASELLE

ILS-S

RWY 36

DOC 8168 ED 4 – 1993 AMD 10

CHANGE: Revised Chart



TRANSITION ALT 6000

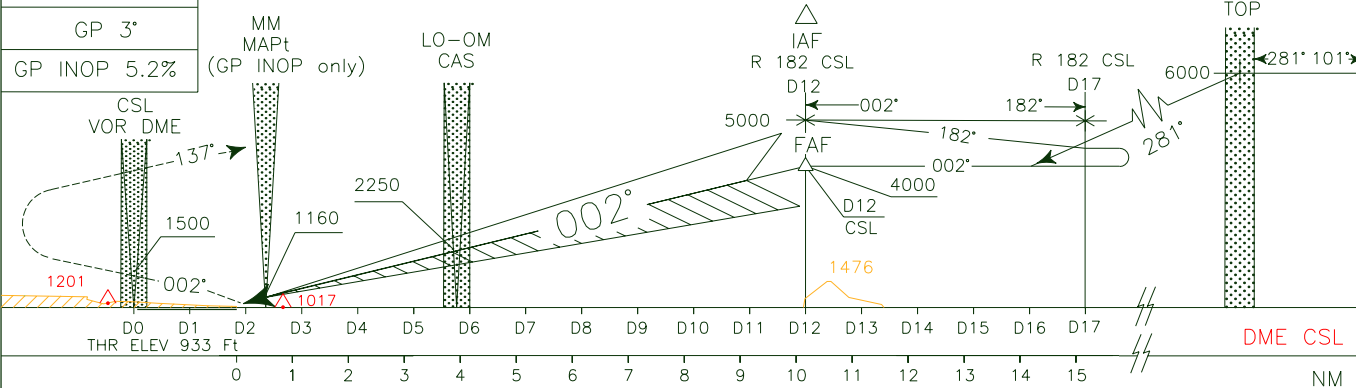
MISSED APPROACH: Continue on track 002° climbing to 4000 Ft. Leaving 1500 Ft turn right on track 137° to join and follow RDL 105 CSL to M.A. Holding Pattern (SIRLO).

REMARK(2): To overfly prohibited area "SALUGGIA-VERCELLI" cross 13 NM CSL DME at 4000ft or above.

RDH 17.40 M

GP 3°

GP INOP 5.2%



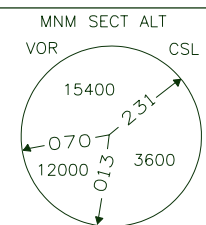
OCA(OCH)	A	B	C	D
STRAIGHT IN APPROACH				
ILS 1°	1098 (165)	1110 (177)	1123 (190)	1137 (204)
ILS 2°	995 (62)	1008 (75)	1020 (87)	1040 (107)
GP INOP	1310 (377)			
CIRCLING *	1550 (561)		1750 (761)	

* CIRCLING ALLOWED ONLY EAST OF RWY



(1) WARNING: TIMING NOT ALLOWED FOR GP INOP

GS	FT PER MIN	OM-MM (1)	MM-THR (1)
100	525	2:03	0:18
120	630	1:43	0:15
140	735	1:28	0:13
160	840	1:17	0:12
180	950	1:08	0:10



ICAO - INSTRUMENT APPROACH CHART

APP *Torino Approach* TWR *Torino Tower*
129.275 118.50
(121.10)

AD ELEV
989

L
I
M
F

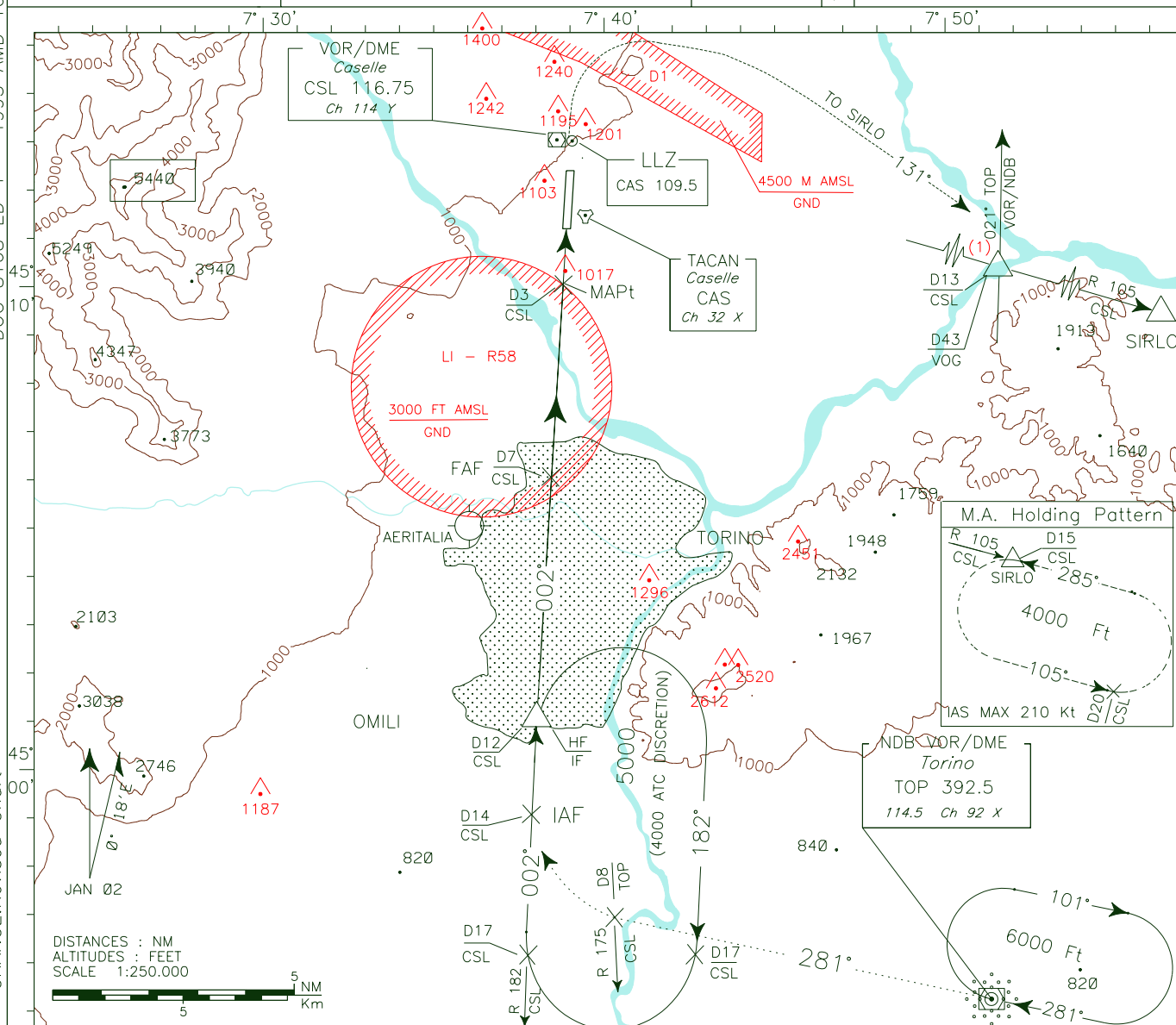
TORINO/CASELLE

VOR+DME

RWY 36

DOC 8168 ED 4 - 1993 AMD 10

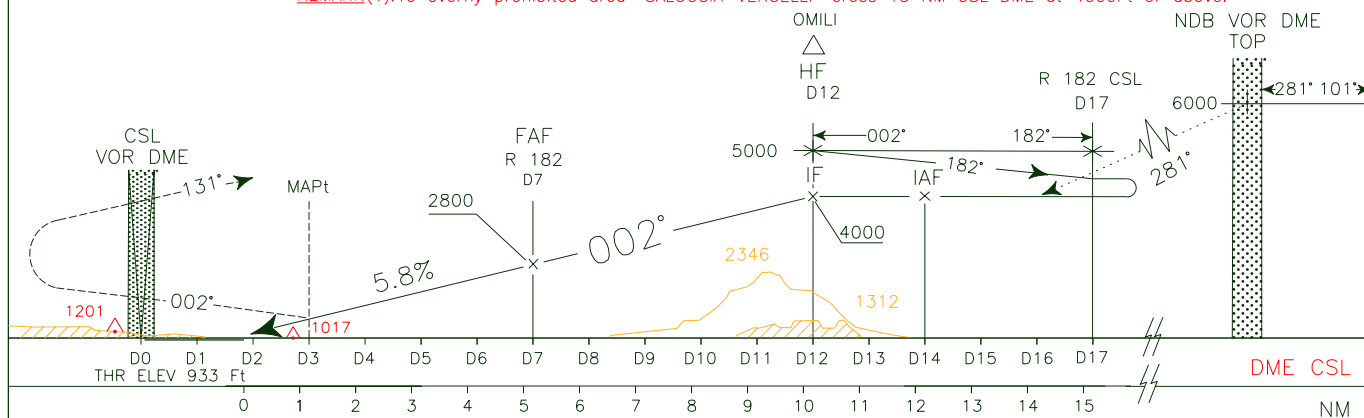
CHANGE: Revised Chart



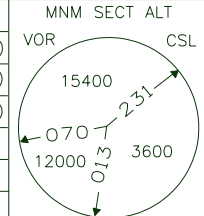
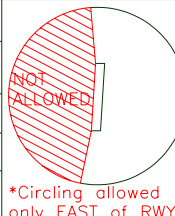
TRANSITION ALT 6000

MISSED APPROACH: Proceed to CSL VOR climbing to 4000 Ft. Over CSL VOR turn right on track 131° to join and follow RDL 105 CSL to M.A. Holding Pattern (SIRLO).

REMARK(1): To overfly prohibited area "SALUGGIA-VERCELLI" cross 13 NM CSL DME at 4000ft or above.



OCA(OCH)	A	B	C	D	GS	FT PER MIN	FAF-MAP	DIST	ALT (HGT)	MNM SECT ALT
VOR+DME	1360 (427)				100	587	2:24	6DME	2450(1517)	VOR
RWY 36					120	705	2:00	5DME	2095(1162)	CSL
					140	822	1:43	4DME	1745(802)	
					160	940	1:30	3DME	1390(457)	
					180	1057	1:18	2DME	1040(107)	
CIRCLING*	1550 (561)		1750 (761)							



N° 271/4

ENAV

AIRAC EFFECTIVE date 8 AUG 2002 (A4/02)

SCALE 1:250.000

0 5 NM

0 5 Km

APP *Torino Approach*

5125.55

(121.10)

AD ELEV

989

L
M
F

TORINO/CASELLE

TWR *Torino Tower*

118.50

FIS *Milano Info*

134.30

AIRSPACE CLASSIFICATION: SEE AIP RAC 1

--- VFR sectors within Milano Area

(*) - Vertical/lateral limits for Aeroclub Parachuting activity within R 58 (See AIP Italia-RAC 5-6-1.20)

(*) - Aerobatic training areas (See AIP Italia-RAC 5-7-1.3)

(1) - Aeroclub training areas (See AIP Italia-RAC 4-1-1.19)

(2) - Overflying interdicted below 1500 Ft. (See AIP-Italia RAC 5-8-1/6)

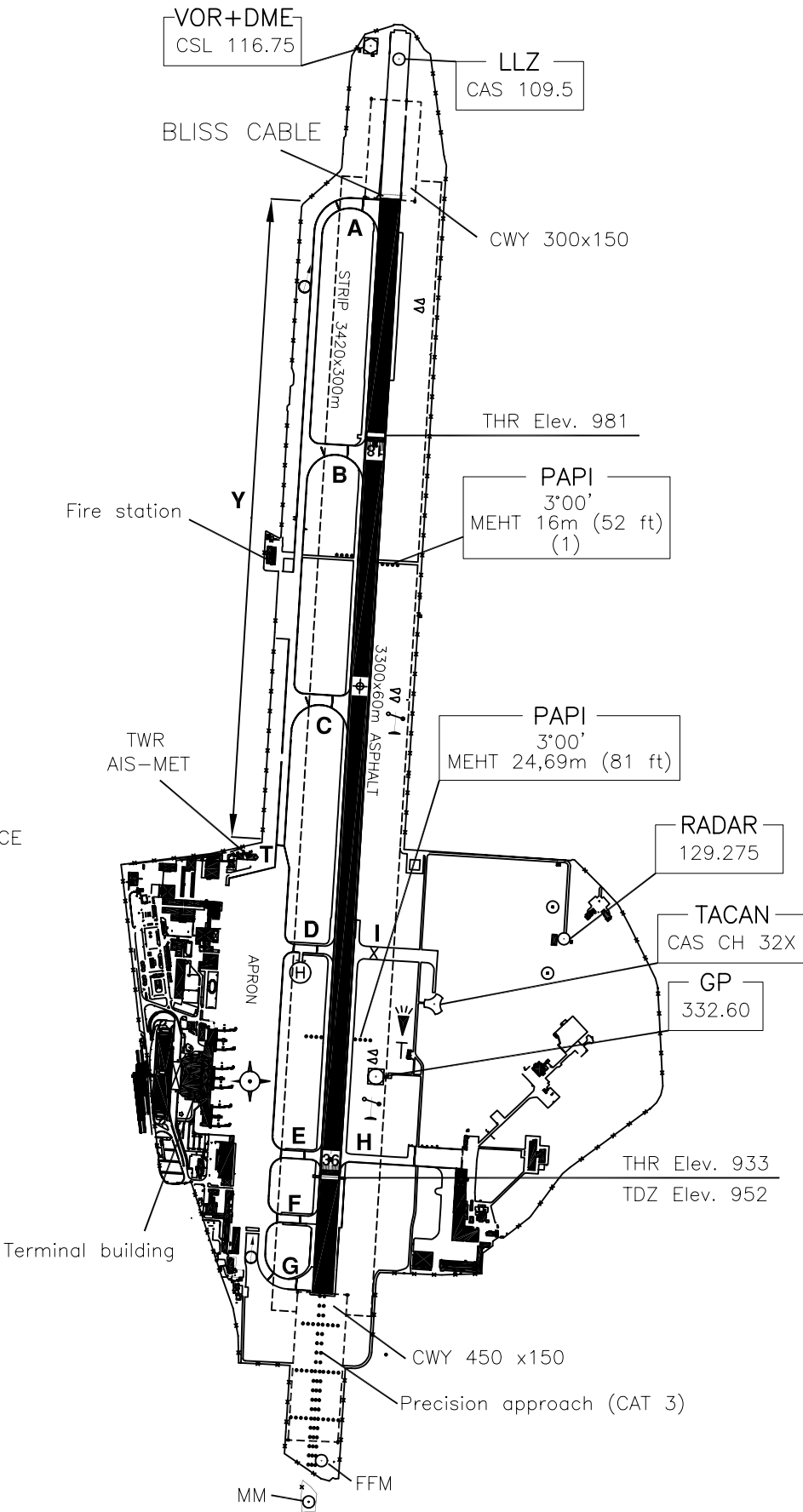
(3) - See AIP RAC 4-1-6.5

TRANSITION ALT 6000ft

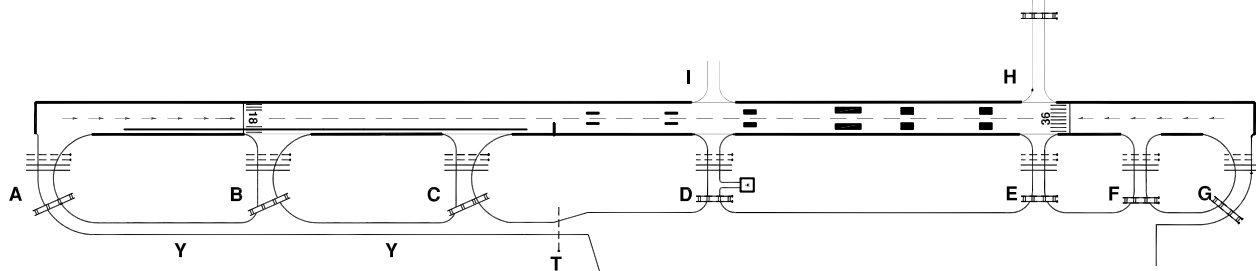
Bearings are magnetic.
Elev and Alt in Ft AMSL.
HGT in Ft above Ad Elev.

Bearings are magnetic Distances in metres Elevation in FT AMSL Coordinates ED50			TWR 118.5
RWY	QFU	THR	bearing strength
18	182°	N 45°12'36.32" E 07°39'04.44"	PCN115 F/B/X/T
36	002°	N 45°11'24.10" E 07°38'59.86"	
TWY IDENT	WIDTH		bearing strength
A-B-C-I	30		PCN115
D-E-F-H	23		F/B/X/T
G	28		

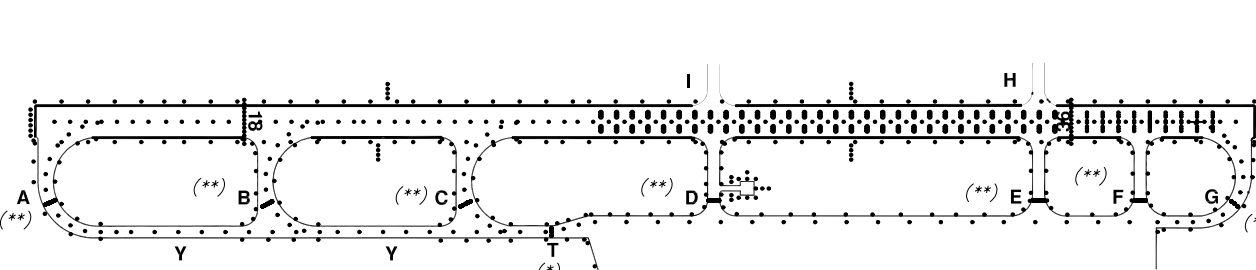
AD ELEV 989	TORINO / CASELLE
APRON ELEV 949	L I M F 45°12'12" N 07°39'02" E



MARKING AIDS



LIGHTING AIDS



NOT SCALE

LEGEND
(*) STOP BAR
(**) FIXED RED LIGHTS