

NOT TO BE USED FOR REAL NAVIGATION PURPOSE

JEPPESEN

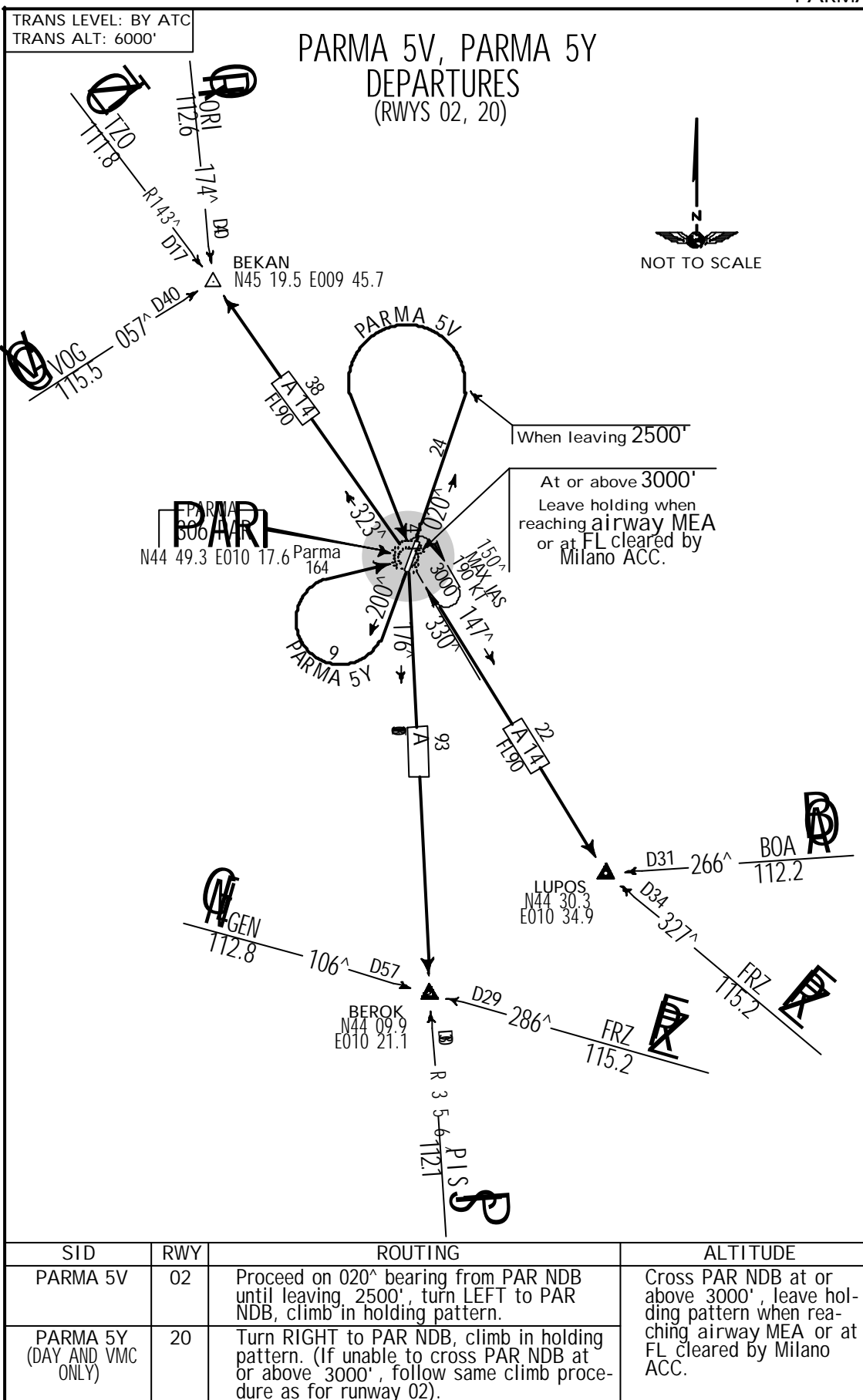
5 NOV 93

10-3

.Eff.11.Nov.

.SID.
PARMA, ITALY

PARMA



CHANGES: Undesignated departures replaced by SIDs.

JEPPESEN SANDERSON, INC., 1991, 1993. ALL RIGHTS RESERVED.

NOT TO BE USED FOR REAL NAVIGATION PURPOSE

LIMP
Apt Elev 164'

180.9°/37.0 from BSA 117.7

JEPPESEN

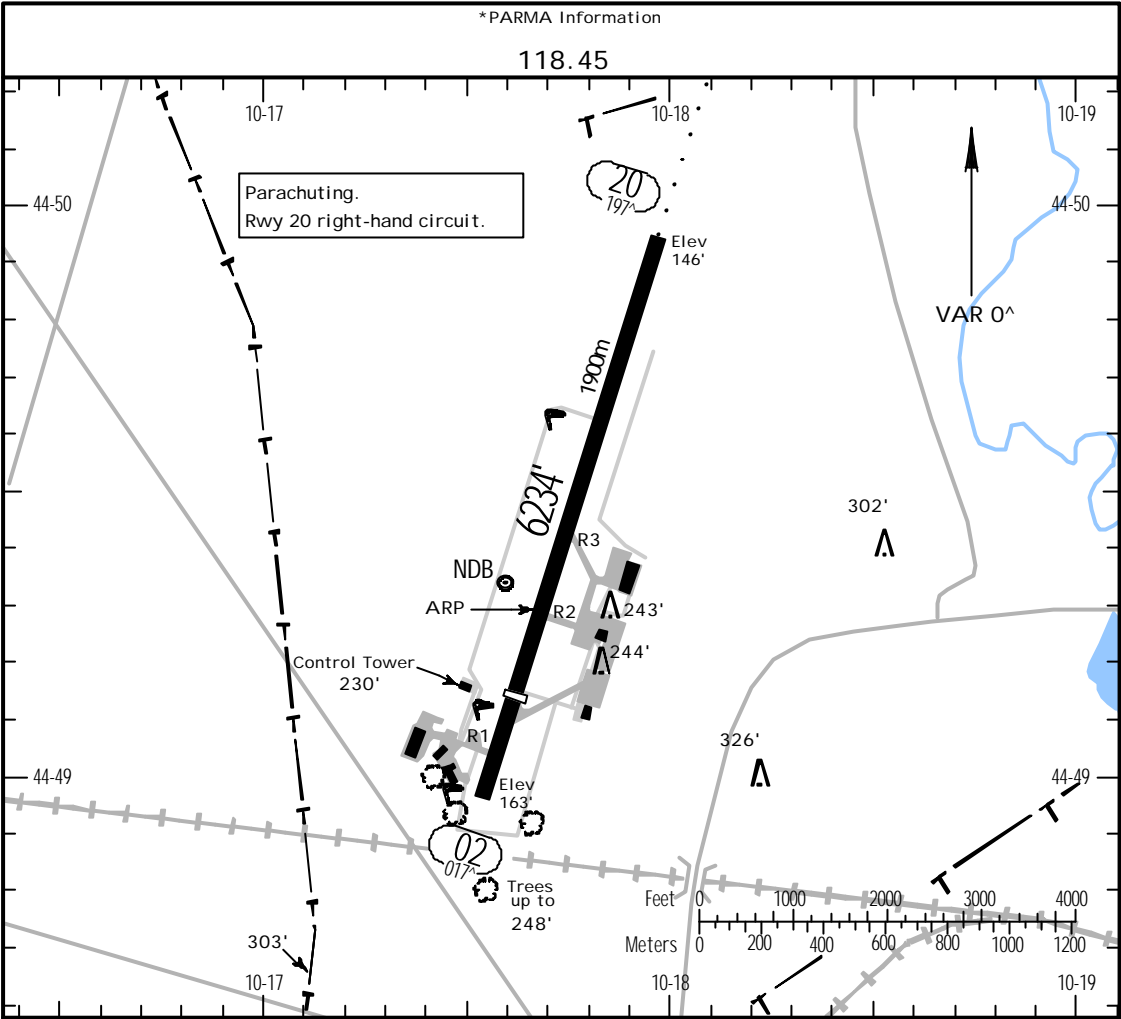
6 AUG 99

10-9

PARMA, ITALY

PARMA

N44 49.3 E010 17.7



ADDITIONAL RUNWAY INFORMATION

RWY		USABLE LENGTHS		TAKE-OFF	WIDTH
		Threshold	Landing Beyond Glide Slope		
02	RL	5108' 1557m			148'
20	RL ALS SFL PAPI-L(3.0°)		5383' 1641m		45m

JAR-OPS.

TAKE-OFF 1

All Rwy's

	LVP must be in Force		
	RCLM (DAY only) or RL	RCLM (DAY only) or RL	NIL (DAY only)
A			
B	250m	400m	500m
C			
D	NOT APPLICABLE		

1 Operators applying U.S. Ops Specs: CL required below 300m.

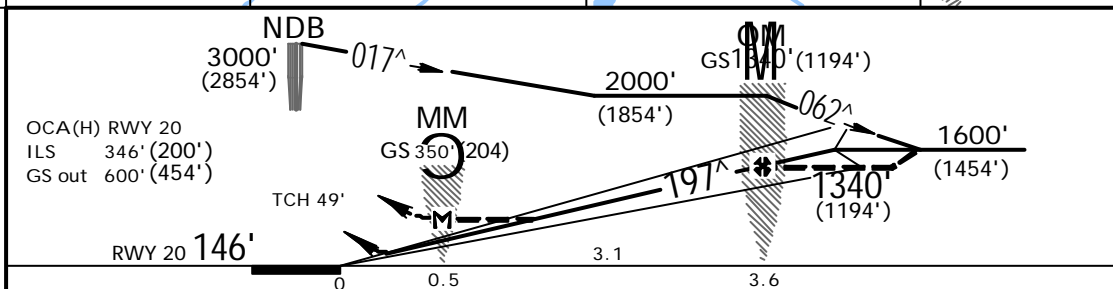
LIMP
PARMA

JEPPESSEN

6 AUG 99 (11-1)

CAT A, B & C

PARMA, ITALY
ILS-Papa Rwy 20



Gnd speed-Kts	70	90	100	120	140	160
GS 3.00^ or LOC Descent Gradient 5.2%	377	485	539	647	755	862
MAP at MM						

JAR-OPS.		STRAIGHT-IN LANDING RWY 20				CIRCLE-TO-LAND 1		
ILS		LOC (GS out)				Not authorized East of airport.		
DA(H) 346' (200')		MDA(H) 600' (454')						
FULL		ALS out				Max Kts.	MDA(H)	VIS
A	RVR 800m	RVR 1000m	RVR 1500m	NOT AUTH	RVR 1500m	100	850' (686')	1500m
B			RVR 1800m		RVR 2000m	135	850' (686')	1600m
C						180	1000' (836')	2400m
D	NOT APPLICABLE					D	NOT APPLICABLE	

1 To rwy 02 permitted at day and in VMC only.

CHANGES: Thr Elev. Minimums. New chart format.

JEPPESSEN SANDERSON, INC., 1999. ALL RIGHTS RESERVED

NOT TO BE USED FOR REAL NAVIGATION PURPOSE

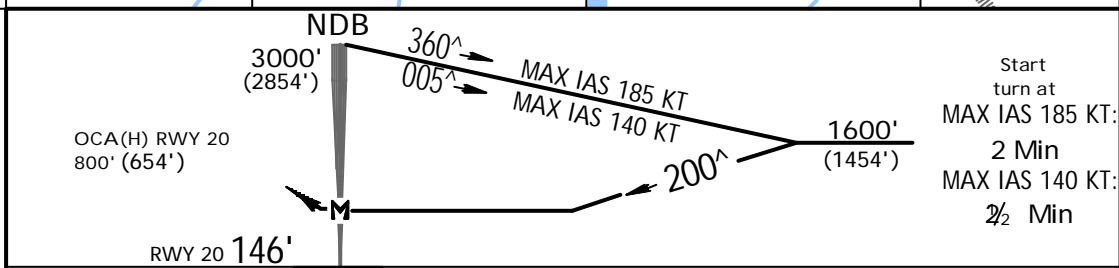
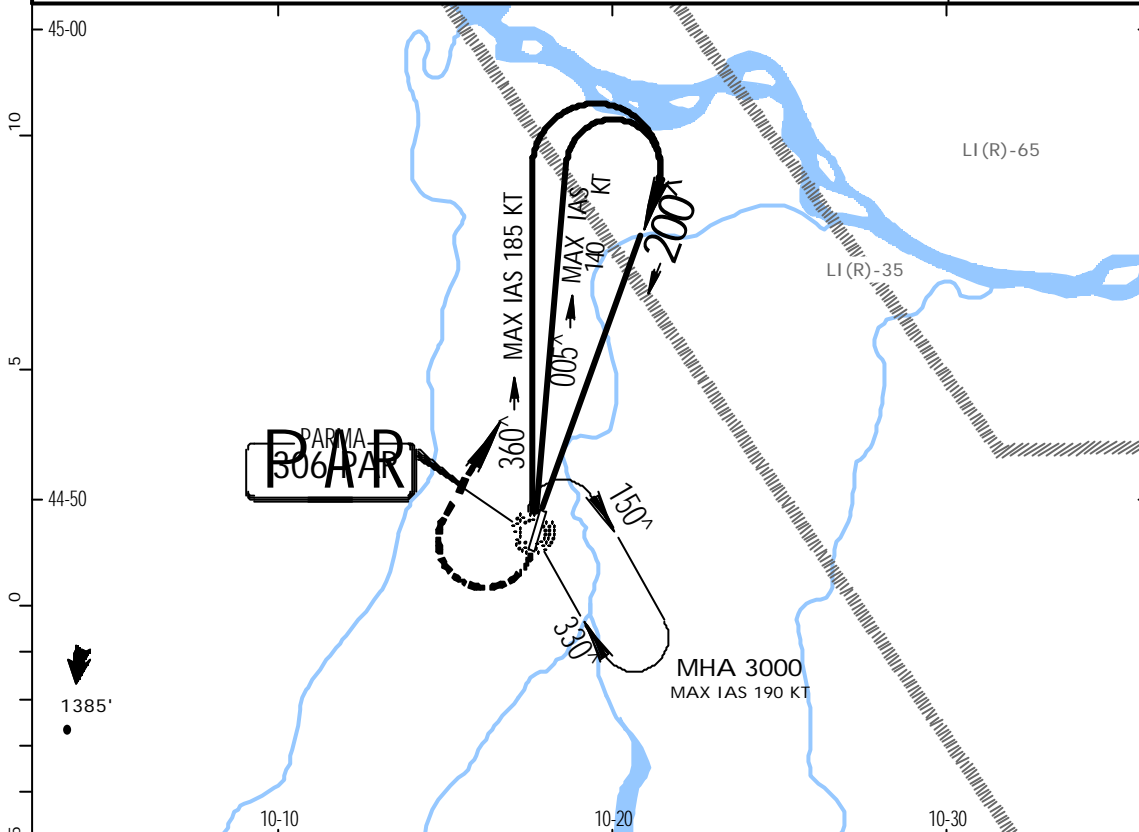
LIMP
PARMA

JEPPESEN
6 AUG 99 (16-1)

PARMA, ITALY
CAT A, B & C NDB Rwy 20

BRIEFING STRIP™

MILAN Control (APP)				*PARMA Information	
135.12				118.45	
NDB PAR 306	Final Apch Crs 200 [^]	Minimum Alt No FAF	MDA(H) 800' (654')	Apt Elev 164' RWY 146'	
MISSED APCH: Turn RIGHT (MAX IAS 185 KT) onto 360 [^] from NDB climbing to 2500', then turn RIGHT to NDB at 3000'.					
Alt Set: hPa	Rwy Elev: 5 hPa	Trans level: By ATC	Trans alt: 6000' (5854')	MSA PAR NDB	



MAP at NDB				ALS	Refer to Missed Apch above
				PAPI	

JAR-OPS. STRAIGHT-IN LANDING RWY 20				CIRCLE-TO-LAND 1	
MDA(H) 800' (654')				Not authorized East of airport.	
ALS out				Max Kts	MDA(H) VIS
RVR 1500m				100	850' (686') 1500m
				135	850' (686') 1600m
RVR 1800m RVR 2000m				180	1000' (836') 2400m
NOT APPLICABLE				D	NOT APPLICABLE

1 To rwy 02 permitted at day and in VMC only.

CHANGES: Minimums. New chart format.

JEPPESEN SANDERSON, INC., 1999. ALL RIGHTS RESERVED