

NOT TO BE USED FOR REAL NAVIGATION PURPOSE

JEPPESEN

5 NOV 93

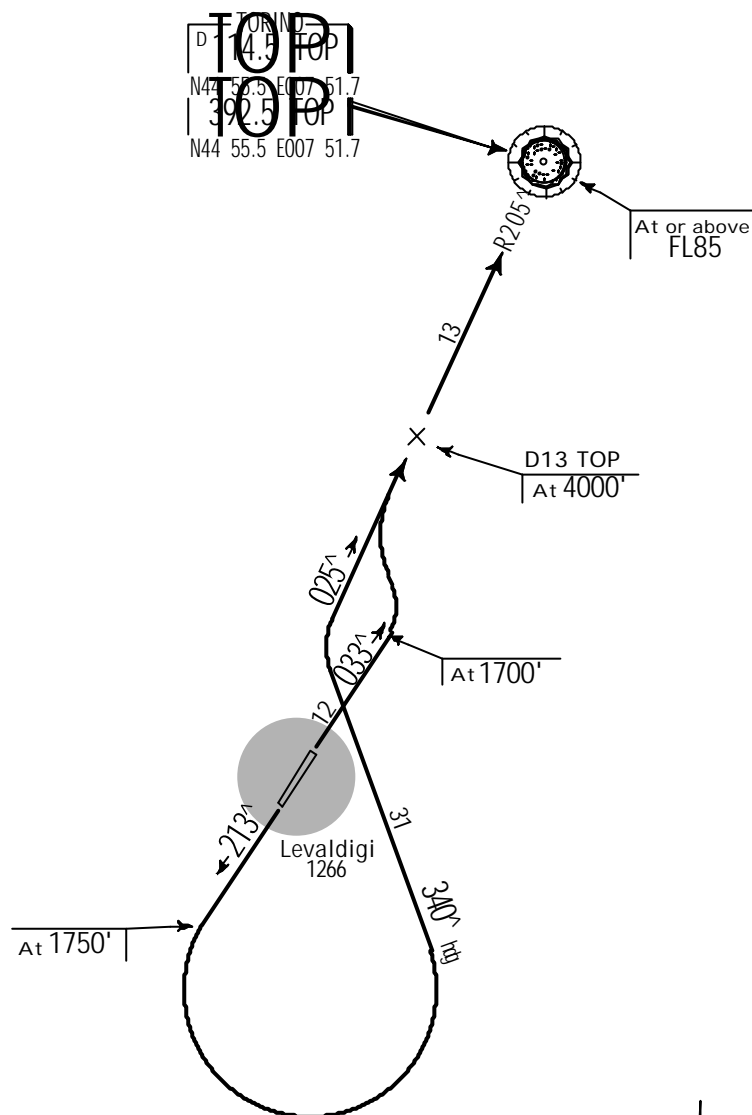
10-3

.Eff.11.Nov.

.SID.
CUNEO, ITALY
LEVALDIGI

TRANS LEVEL: BY ATC
TRANS ALT: 6000'

TORINO 5Q DEPARTURE (RWYS 03, 21)



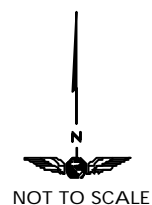
These SIDs require a minimum climb gradient of

Rwy 03: 425' per nm (7%) until leaving 1700'.

Rwy 21: 425' per nm (7%) until leaving 1750'.

Aircraft not able to perform the requested climb gradient, must maintain VMC conditions until leaving 2000'.

Gnd speed-Kts	75	100	150	200	250	300
425' per nm	532	709	1063	1418	1772	2127



RWY	ROUTING	ALTITUDE
03	Climb straight ahead, at 1700' turn LEFT, intercept TOP R-205 inbound to TOP VORDME.	Cross D13 TOP at 4000', TOP VORDME at or above FL85.
21	Climb straight ahead, at 1750' turn LEFT, 340° heading to intercept TOP R-205 inbound to TOP VORDME.	

CHANGES: TORINO 1A SID renumbered 5Q.

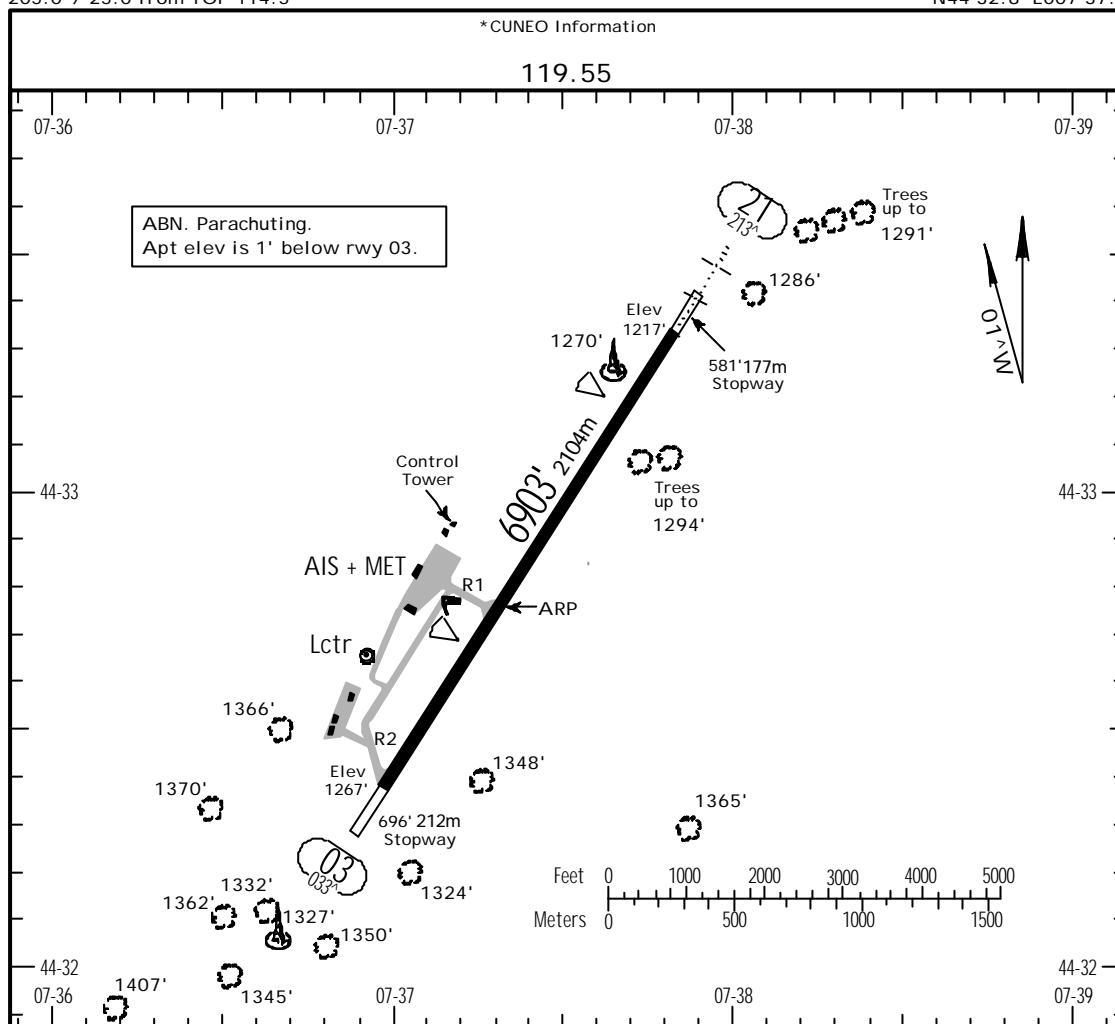
JEPPESEN SANDERSON, INC., 1991, 1993. ALL RIGHTS RESERVED.

NOT TO BE USED FOR REAL NAVIGATION PURPOSE

LIMZ
Apt Elev 1266'
205.0°/ 25.0 from TOP 114.5

JEPPESEN
20 AUG 99
10-9

CUNEO, ITALY
LEVALDIGI
N44 32.8 E007 37.3



ADDITIONAL RUNWAY INFORMATION									
RWY					USABLE LENGTHS		TAKE-OFF	WIDTH	
					LANDING BEYOND				
					Threshold	Glide Slope			
03	RL	REIL	PAPI-L (angle 3.0°)		RVR			1	148' 45m
21	RL	HIALS	REIL	PAPI-L (angle 3.0°)		RVR	5897' 1797m		

1 Stopway in front of threshold available for take-off on request.

TAKE-OFF		
AIR CARRIER All Rwys		
A	400m	
B		
C		
D		

CHANGES: Usable lengths. New chart format.

JEPPESEN SANDERSON, INC., 1999. ALL RIGHTS RESERVED

NOT TO BE USED FOR REAL NAVIGATION PURPOSE

JEPPESEN

21 NOV 97

11-1

.Eff. 4. Dec.

CUNEO, ITALY

LEVALDIGI

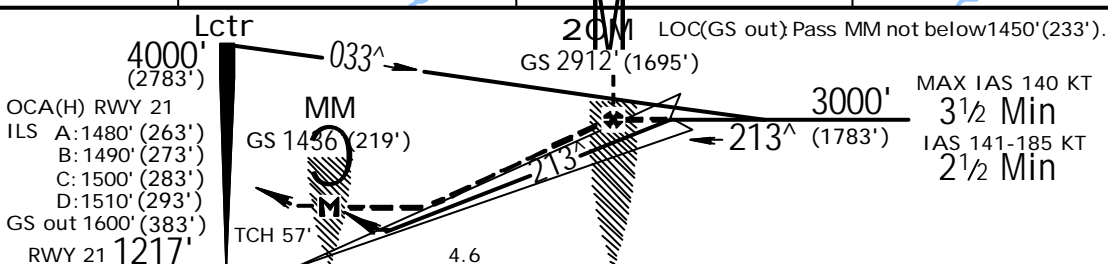
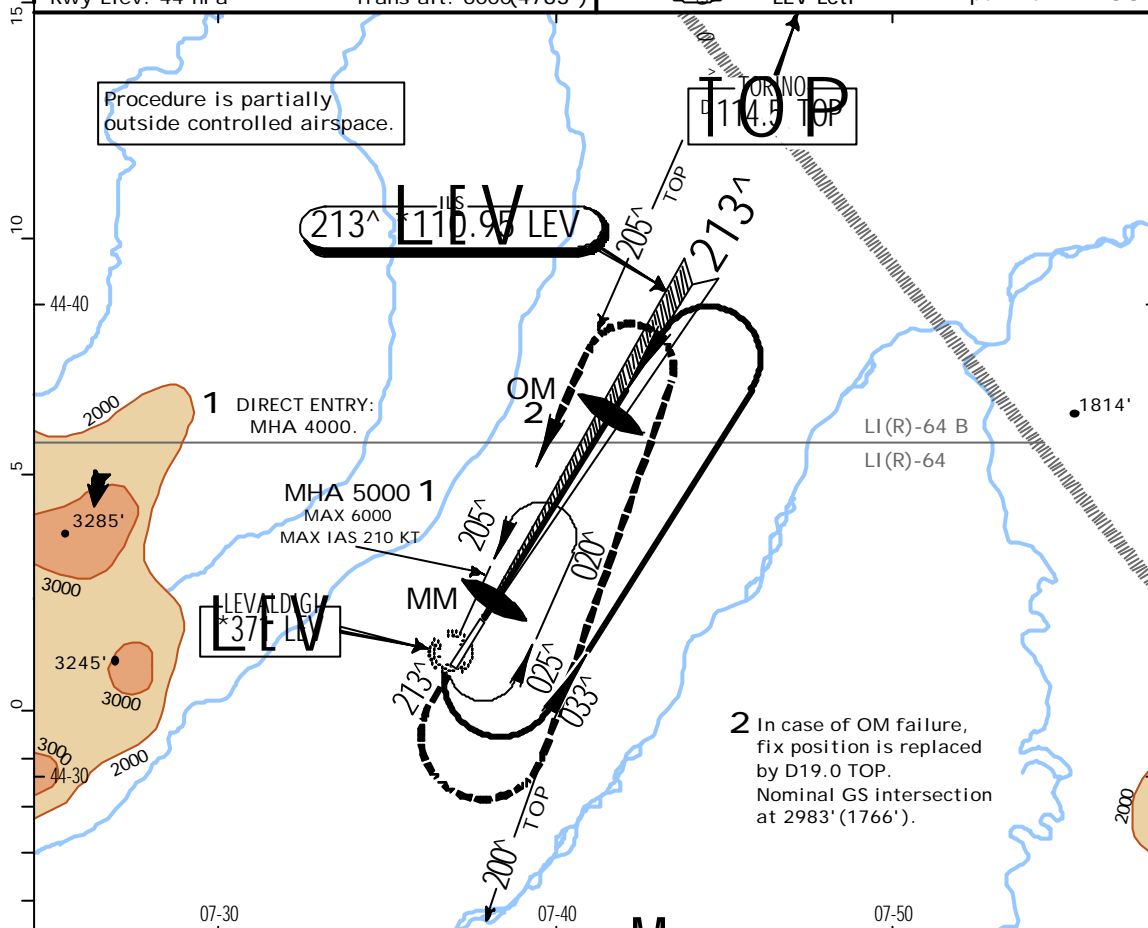
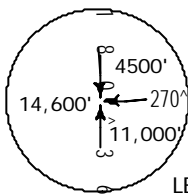
ILS-Papa Rwy 21

LOC *110.95 LEV

Apt. Elev 1266'

Torino Approach 121.1
*CUNEO Information 119.55

Alt Set: hPa
Rwy Elev: 44 hPa
Trans level: By ATC
Trans alt: 6000(4783')



MISSED APPROACH: Climb on 213° to 1700' (483'), then turn LEFT and climb on R-200 inbound VOR to 4000' (2783'), then turn LEFT onto 205° to Lctr following R-205 to Lctr. MAX IAS 185 KT during turns.

STRAIGHT-IN LANDING RWY 21						CIRCLE-TO-LAND	
ILS						Not authorized West of rwy	
LOC (GS out)							
MDA(H) 1600' (383')							
DA(H) A: 1480' (263') B: 1490' (273') C: 1500' (283') D: 1510' (293')							
FULL							
ALS out							
MM out							
ALS out							
NOT AUTH							
RVR 1500m VIS 1600m							
2000m							
2000m							
205							
2100' (834')							
4400m							
Gnd speed-Kts							
70 90 100 120 140 160							
ILS GS 3.00°							
377 485 539 647 755 862							
LOC Descent Gradient 5.5%							
390 501 557 668 780 891							
MAP at MM							

CHANGES: Procedure.

JEPPESEN SANDERSON, INC., 1997. ALL RIGHTS RESERVED.

NOT TO BE USED FOR REAL NAVIGATION PURPOSE

