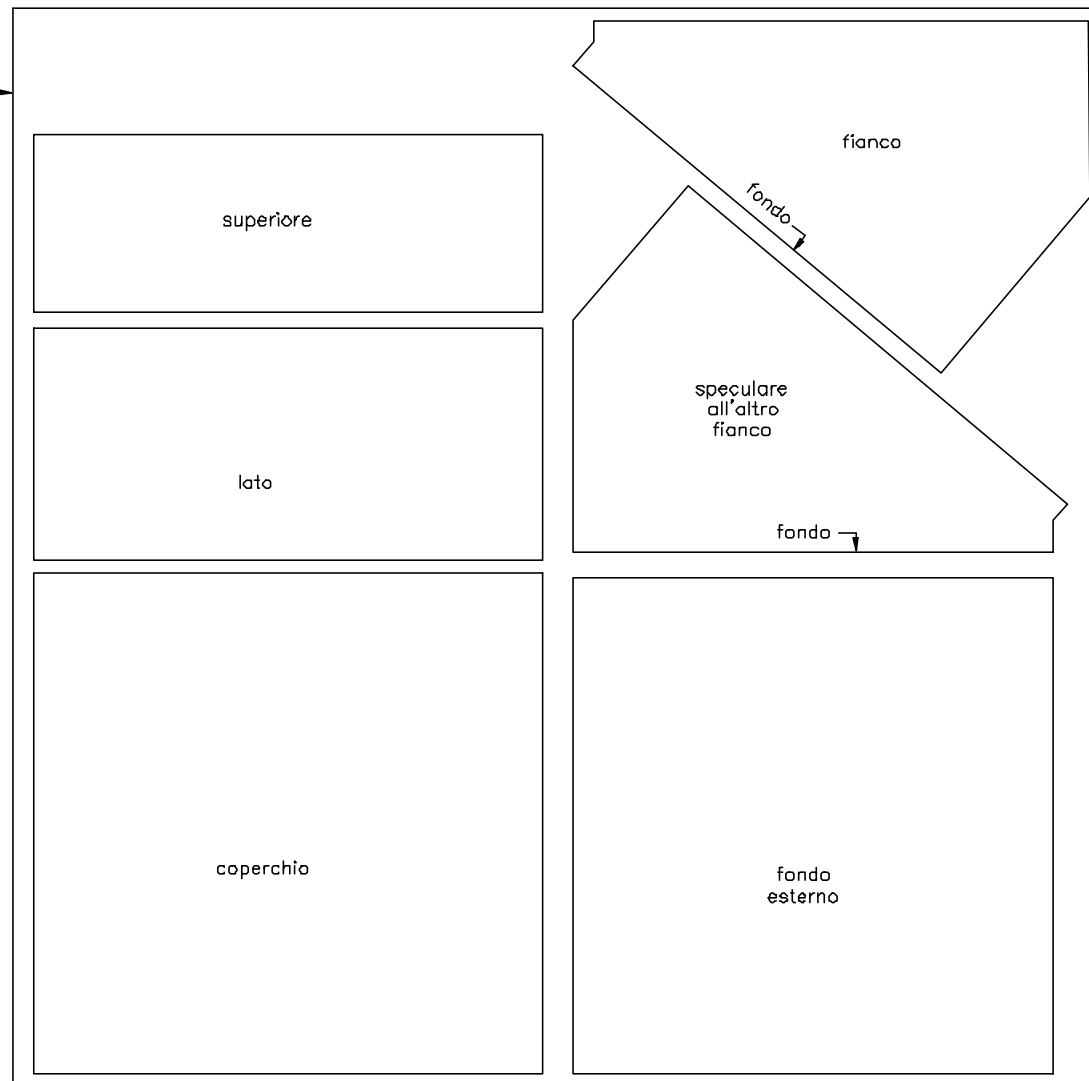
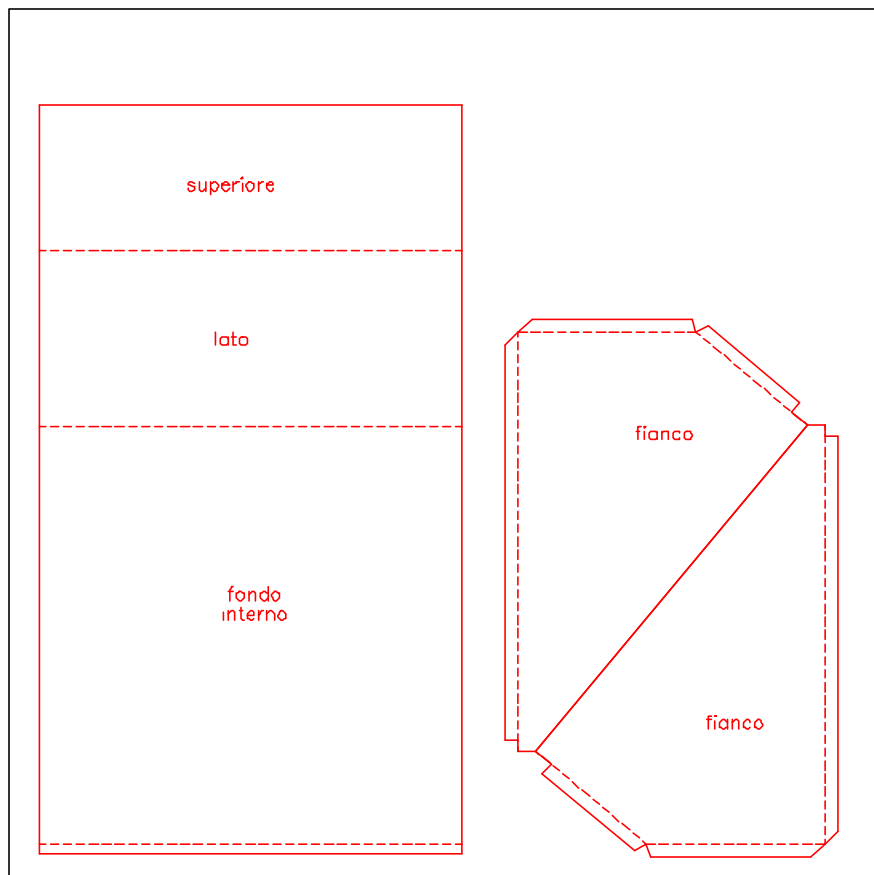


TAGLIO

comp. fenolico 7 mm  
1,25x1,25 mt  
(mezzo foglio)

lamiera zincata 6/10 1x1 mt (mezzo foglio)



listelli:

- |               |               |  |
|---------------|---------------|--|
| 2 - 5x15x545  | 2 - 10x10x237 | 8 - 10x38x566 (10x40 ridotto) (per telaio)         |
| 2 - 5x15x583  | 2 - 10x10x542 | 3 - 20x40x490 (2 incollati per ottenere 40x40x490) |
| 2 - 10x10x153 | 1 - 10x10x550 | 2 - 20x40x585                                      |

listelli di compensato:

- 4 - 4x32x566 (per telaio)