

**LIBP
PESCARA**

JEPPESEN
27 AUG 99 (13-1)

**PESCARA, ITALY
VOR DME-Papa Rwy 22**

PESCARA Approach
120.05

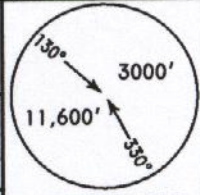
PESCARA Tower
118.45

BRIEFING STRIP™

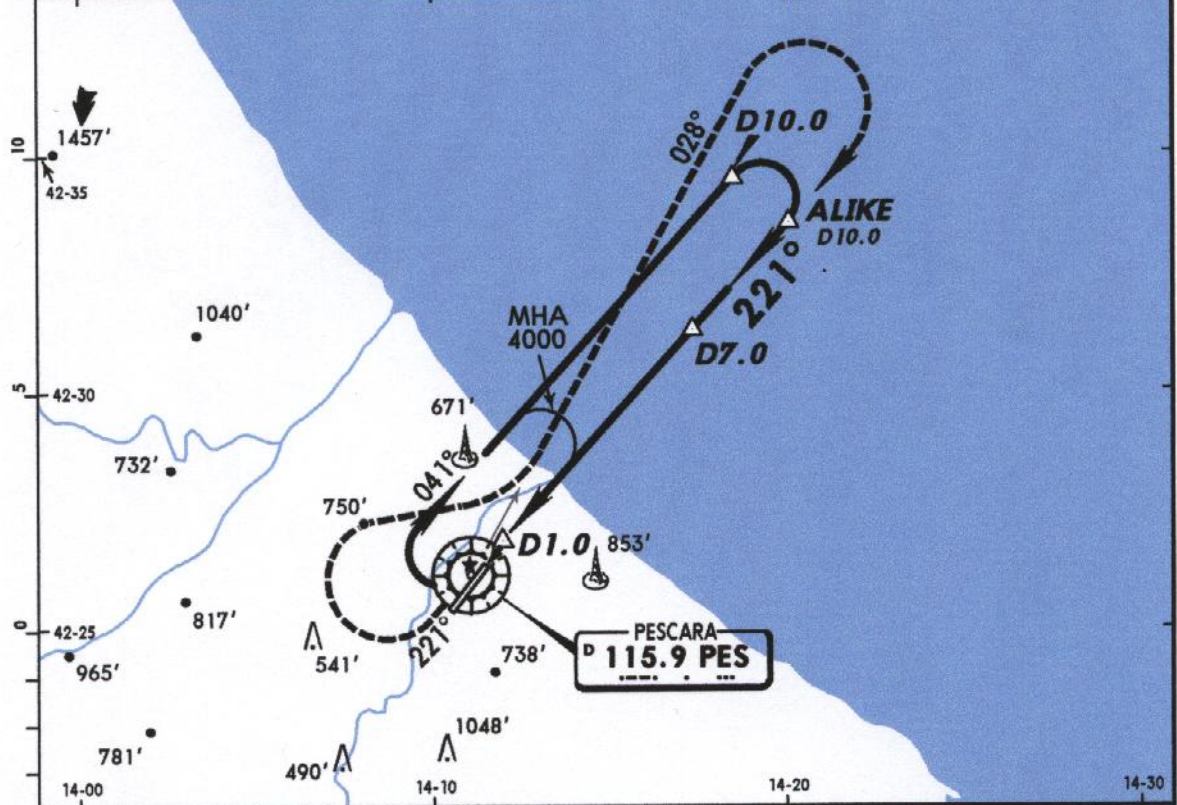
VOR PES 115.9	Final Apch Crs 221°	Minimum Alt D7.0 2000' (1973')	MDA(H) 700' (673')	Apt Elev 48' RWY 27'
------------------------------	------------------------------------	---	-------------------------------	---------------------------------

MISSED APCH: Climb on track 221° to 1000', then turn RIGHT (MAX IAS 230 KT) to intercept and follow R-028 climbing to 4000', then turn RIGHT to VOR.

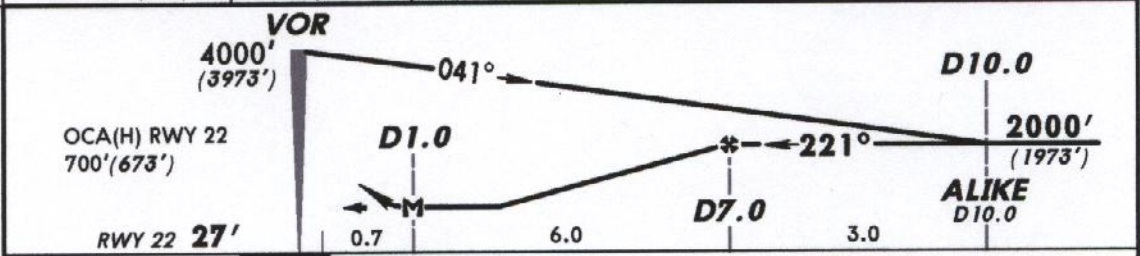
Alt Set: hPa Rwy Elev: 1 hPa Trans level: By ATC Trans alt: 5000' (4973')



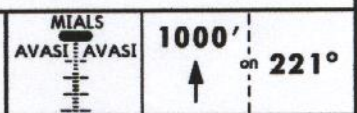
MSA PES VOR



PES DME	2.0	3.0	4.0	5.0	6.0
ALTITUDE (HAT)	550' (523')	840' (813')	1130' (1103')	1420' (1393')	1710' (1683')



Gnd speed-Kts	70	90	100	120	140	160
Descent Gradient 4.8%	340	437	486	583	681	778
MAP at D1.0						



JAR-OPS		STRAIGHT-IN LANDING RWY 22		CIRCLE-TO-LAND	
		MDA(H) 700' (673')		Not authorized Southeast of rwy	
		ALS out		Max Kts	
A	RVR 1500m			100	1100' (1052') 1500m
B	RVR 1800m			135	1100' (1052') 1600m
C	RVR 1800m	RVR 2000m		180	1200' (1152') 2400m
D	RVR 2000m			205	1300' (1252') 3600m

PANS OPS 4

PESCARA Approach

PESCARA Tower

120.05

118.45

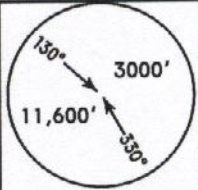
VOR
PES
115.9

Final
Apch Crs
221°

Minimum Alt
D7.0
2000' (1973')

MDA(H)
700' (673')

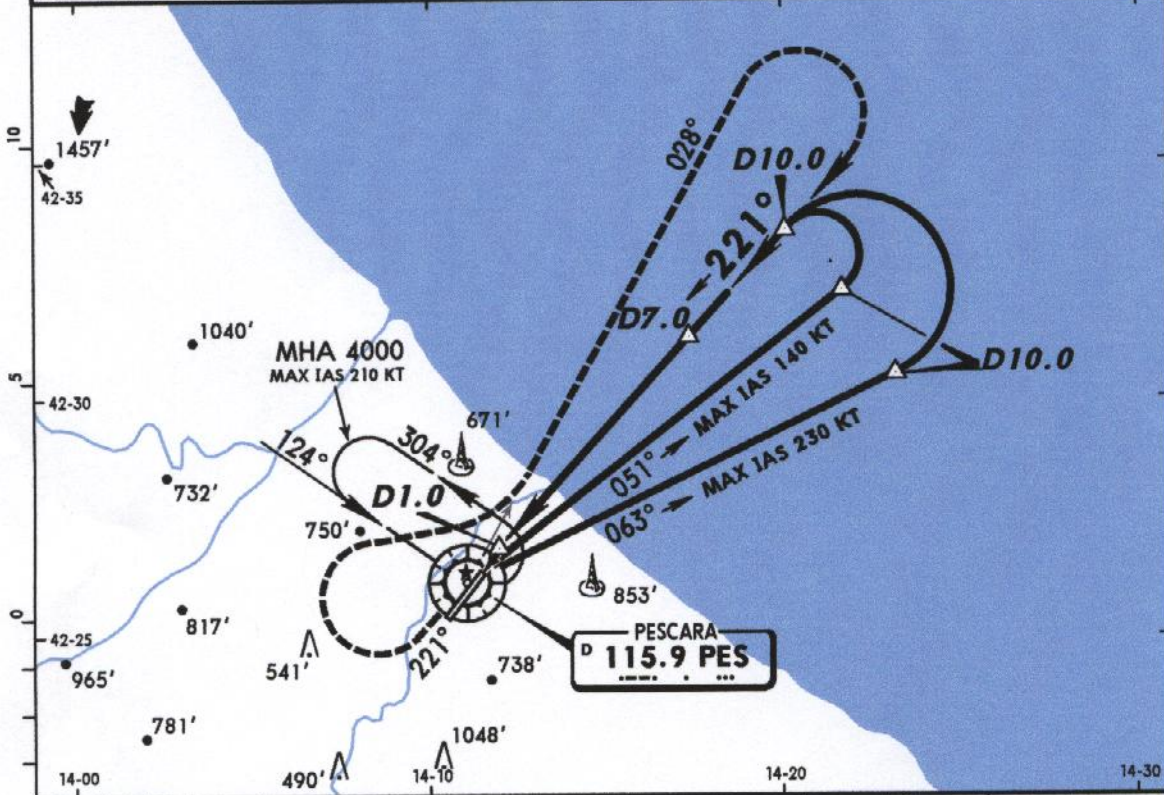
Apt Elev 48'
RWY 27'



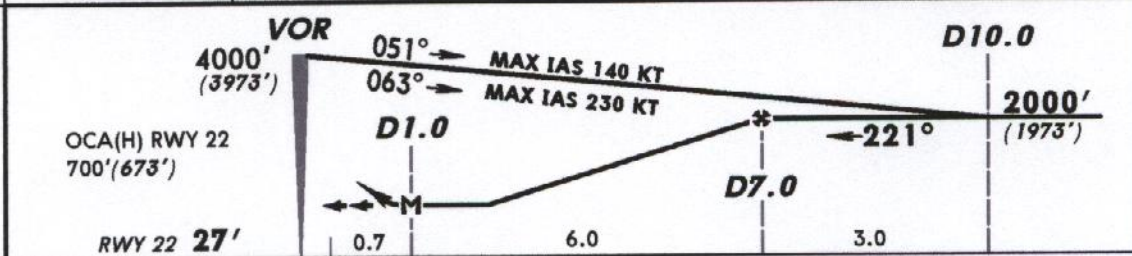
MISSED APCH: Climb on track 221° to 1000', then turn RIGHT (MAX IAS 230 KT) to intercept and follow R-028 climbing to 4000', then turn RIGHT to VOR.

Alt Set: hPa Rwy Elev: 1 hPa Trans level: By ATC Trans alt: 5000' (4973')

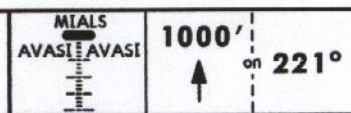
MSA PES VOR



PES DME	2.0	3.0	4.0	5.0	6.0
ALTITUDE (HAT)	550' (523')	840' (813')	1130' (1103')	1420' (1393')	1710' (1683')



Gnd speed-Kts	70	90	100	120	140	160
Descent Gradient 4.8%	340	437	486	583	681	778
MAP at D1.0						



JAR-OPS		STRAIGHT-IN LANDING RWY 22		CIRCLE-TO-LAND	
		MDA(H) 700' (673')		Not authorized Southeast of rwy	
		ALS out		Max Kts	
A	RVR 1500m			100	MDA(H) 1100' (1052') VIS 1500m
B	RVR 1500m			135	MDA(H) 1100' (1052') VIS 1600m
C	RVR 1800m	RVR 2000m		180	MDA(H) 1200' (1152') VIS 2400m
D	RVR 2000m			205	MDA(H) 1300' (1252') VIS 3600m

PANS OPS 4