

**LIBP  
PESCARA**

**JEPPESEN**  
27 AUG 99 **(13-4)**

**PESCARA, ITALY  
VOR-Sierra Rwy 22**

PESCARA Approach  
**120.05**

PESCARA Tower  
**118.45**

VOR  
PES  
**115.9**

Final  
Apch Crs  
**221°**

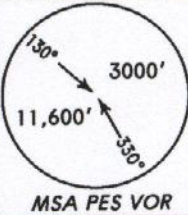
Minimum Alt  
No FAF

MDA(H)  
**750' (723')**

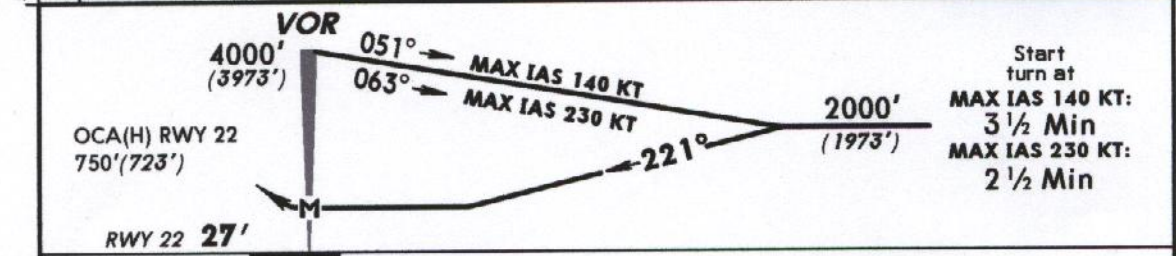
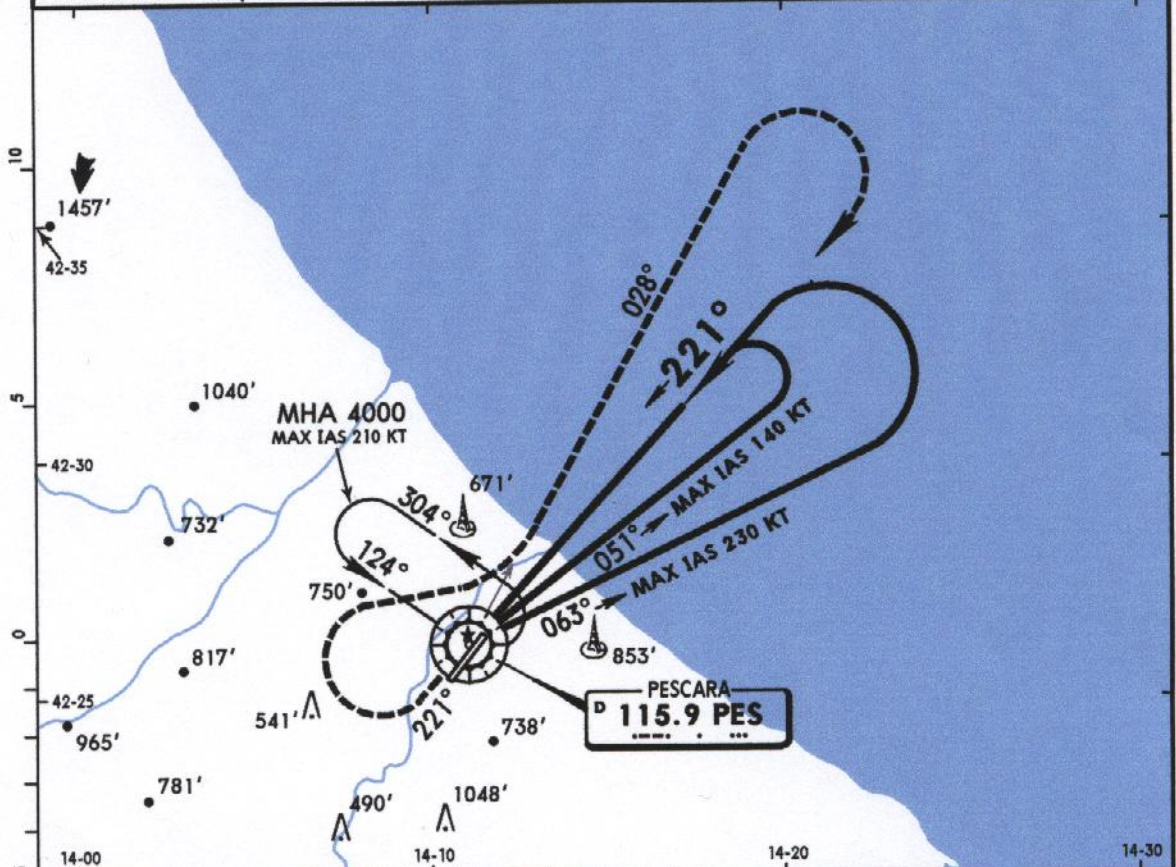
Apt Elev **48'**  
RWY **27'**

**MISSED APCH: Climb on track 221° to 1000', then turn RIGHT (MAX IAS 230 KT) to intercept and follow R-028 climbing to 4000', then turn RIGHT to VOR.**

Alt Set: hPa Rwy Elev: 1 hPa Trans level: By ATC Trans alt: 5000' (4973')



BRIEFING STRIP™



Start turn at  
MAX IAS 140 KT:  
**3 1/2 Min**  
MAX IAS 230 KT:  
**2 1/2 Min**

MAP at VOR				MIALS AVASI AVASI		1000' on 221°	
JAR-OPS	STRAIGHT-IN LANDING RWY 22			CIRCLE-TO-LAND			

MDA(H) <b>750' (723')</b>		Max Kts	MDA(H)	VIS
A	ALS out	100	<b>1100' (1052')</b>	<b>1500m</b>
B	RVR 1500m	135	<b>1100' (1052')</b>	<b>1600m</b>
C	RVR 1800m	180	<b>1200' (1152')</b>	<b>2400m</b>
D	RVR 2000m	205	<b>1300' (1252')</b>	<b>3600m</b>

PANS OPS 4

CHANGES: Minimums. New chart format.

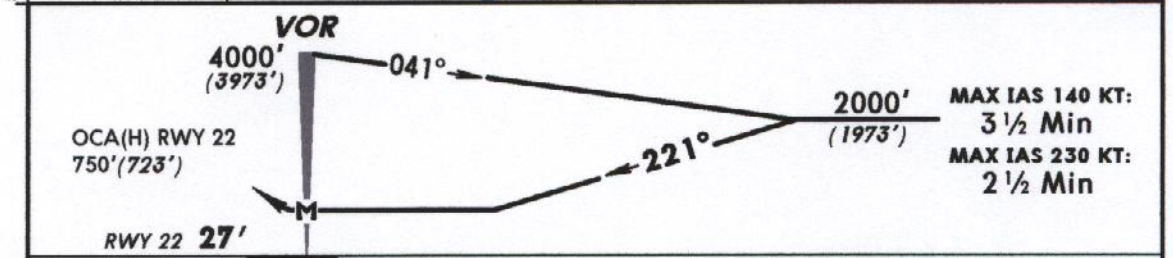
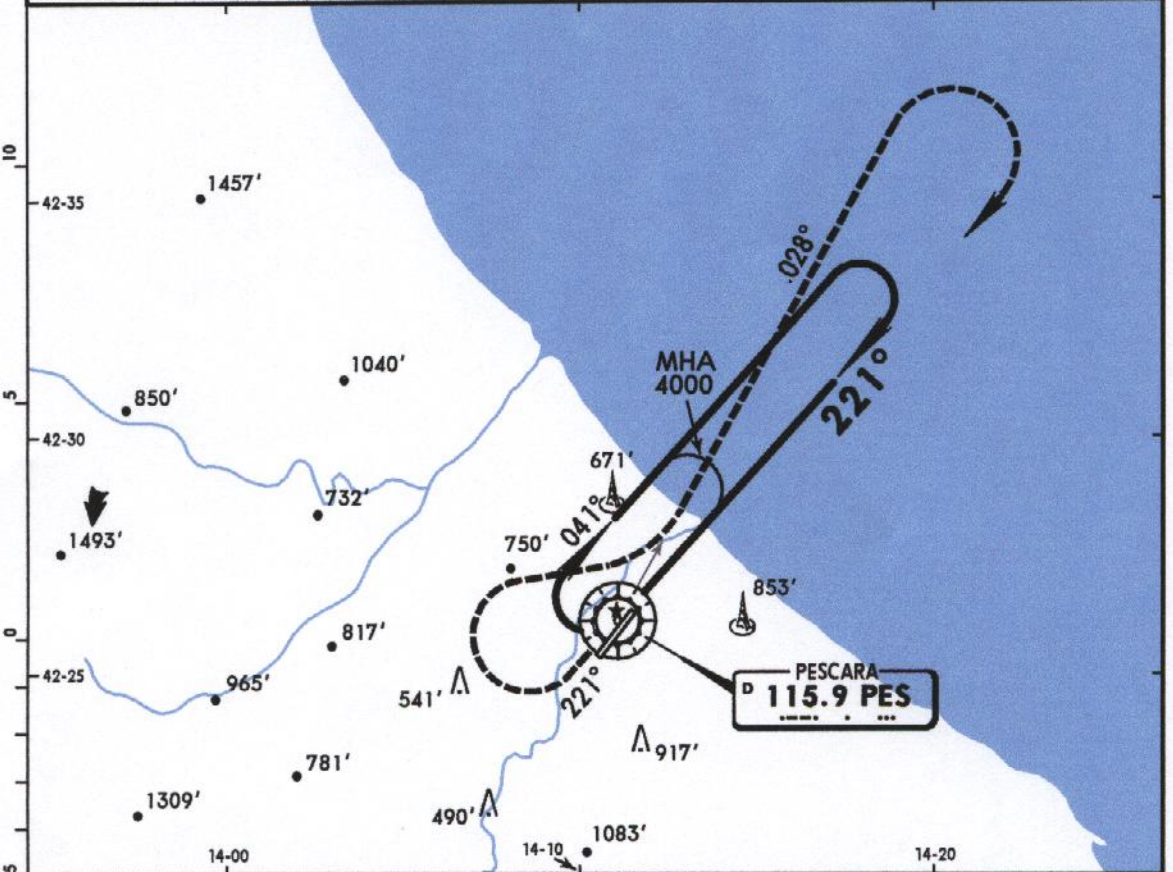
© JEPPESEN SANDERSON, INC., 1999. ALL RIGHTS RESERVED

**LIBP  
PESCARA**

**JEPESEN**  
27 AUG 99 **(13-3)**

**PESCARA, ITALY  
VOR-Papa Rwy 22**

PESCARA Approach <b>120.05</b>			PESCARA Tower <b>118.45</b>	
<b>VOR PES 115.9</b>	<b>Final Apch Crs 221°</b>	<b>Minimum Alt No FAF</b>	<b>MDA(H) 750' (723')</b>	<b>Apt Elev 48' RWY 27'</b>
<b>MISSED APCH: Climb on track 221° to 1000', then turn RIGHT (MAX IAS 230 KT) to intercept and follow R-028 climbing to 4000', then turn RIGHT to VOR.</b>				
Alt Set: hPa Rwy Elev: 1 hPa Trans level: By ATC Trans alt: 5000' (4973')				MSA PES VOR



MAP at VOR	JAR - OPS	STRAIGHT-IN LANDING RWY 22	CIRCLE-TO-LAND
		MDA(H) <b>750' (723')</b>	Not authorized Southeast of rwy
		ALS out	1000' on 221°

	Max Kts	MDA(H)	VIS
A	100	1100' (1052')	1500m
B	135	1100' (1052')	1600m
C	180	1200' (1152')	2400m
D	205	1300' (1252')	3600m