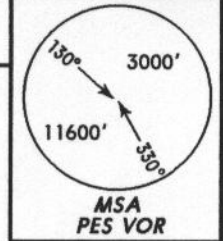


Apt Elev  
48'

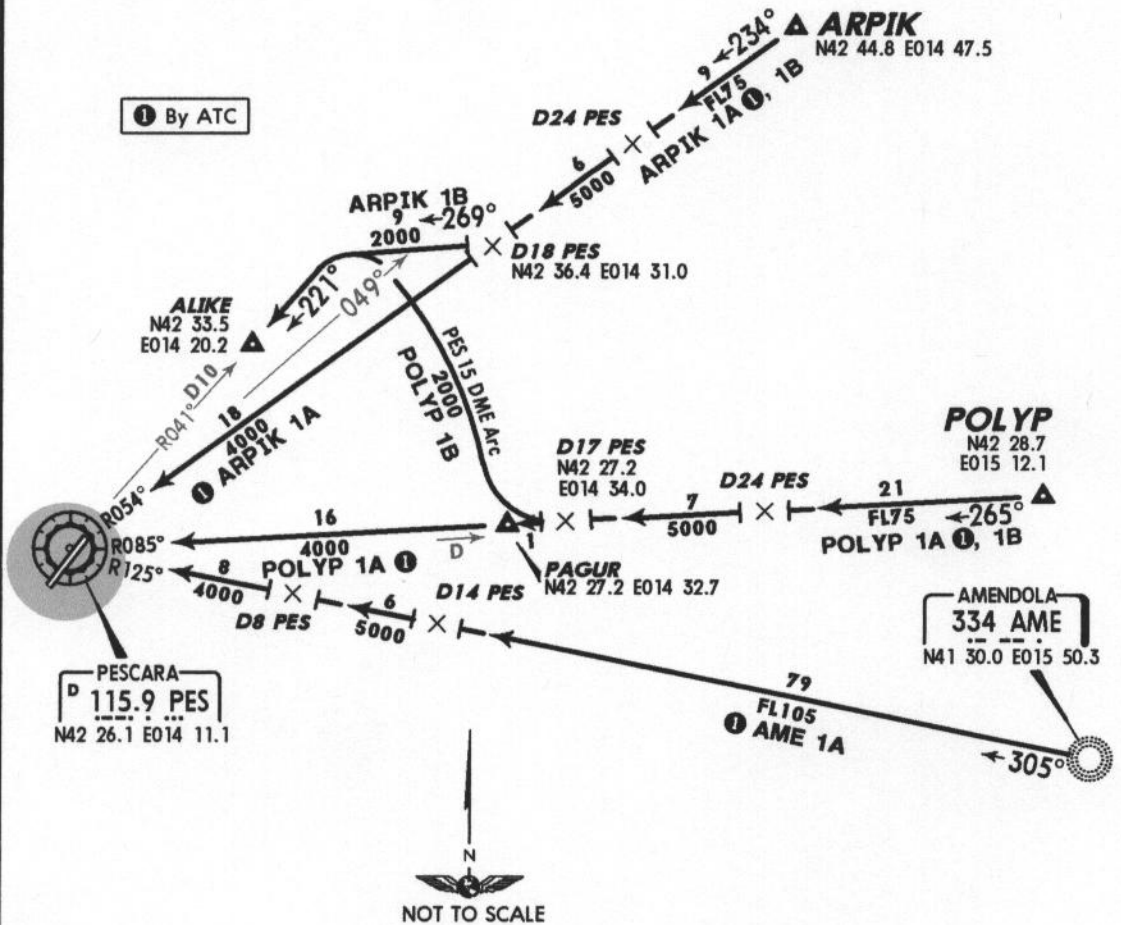
Alt Set: hPa Trans level: By ATC Trans alt: 5000'.



- AME 1A
- ARPIK 1A
- ARPIK 1B
- POLYP 1A
- POLYP 1B

**RWY 22 ARRIVALS**  
FOR VORDME APPROACH FROM NORTHEAST & EAST

By ATC



**HOLDINGS OVER**

**ALIKE**

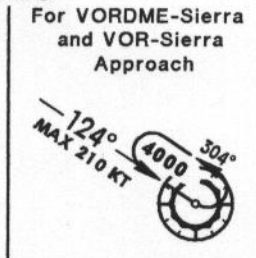
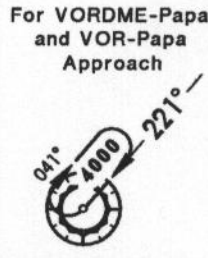
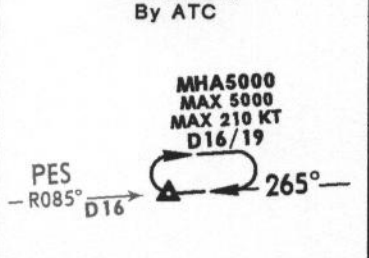
**PAGUR**

**PES**

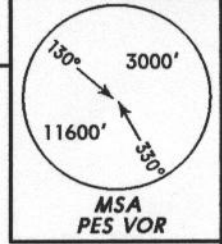
By ATC

For VORDME-Papa and VOR-Papa Approach

For VORDME-Sierra and VOR-Sierra Approach

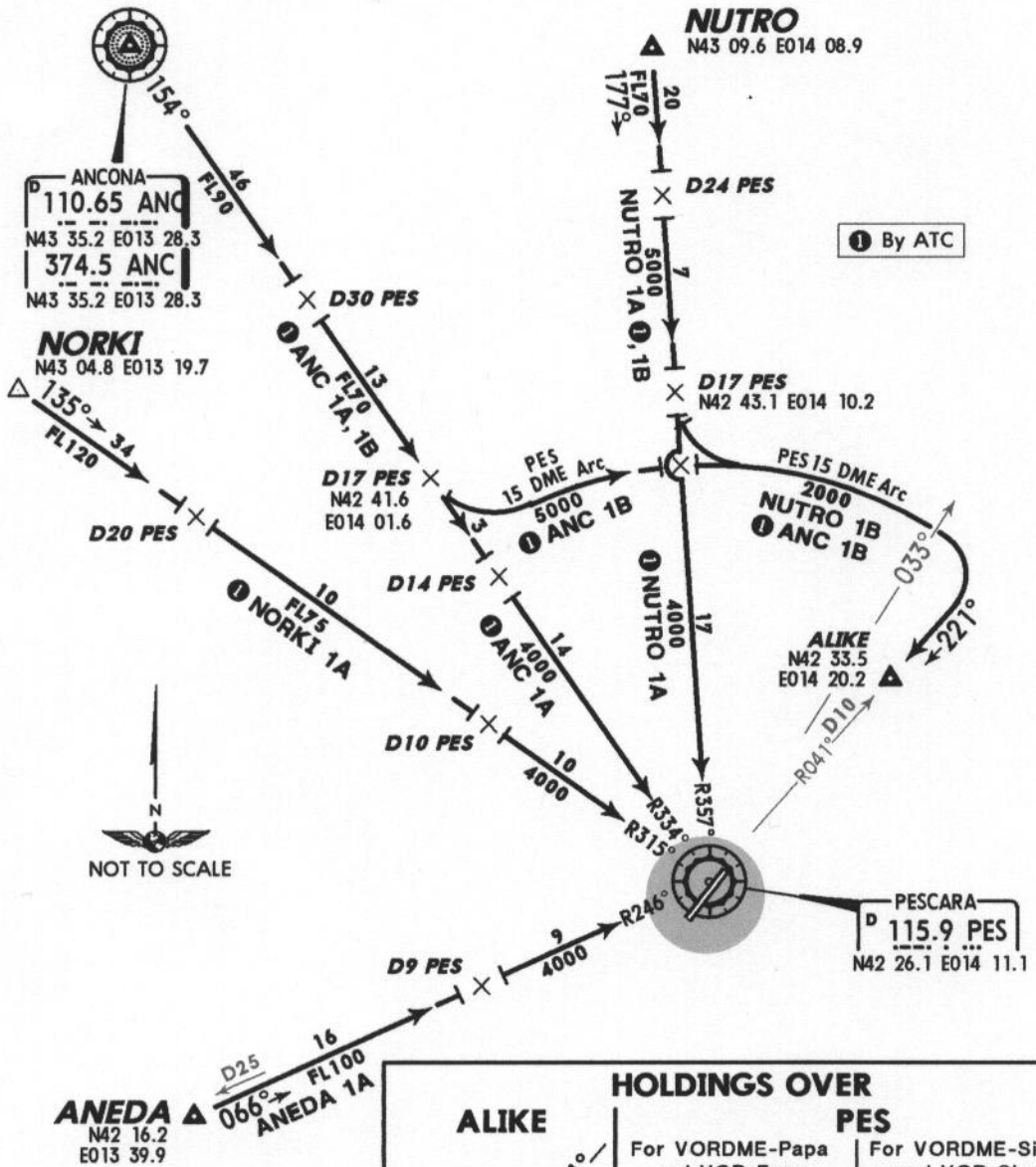


Apt Elev 48' Alt Set: hPa Trans level: By ATC Trans alt: 5000'.



- ANC 1A ●
- ANC 1B ●
- ANEDA 1A
- NORKI 1A ●
- NUTRO 1A
- NUTRO 1B

**RWY 22 ARRIVALS**  
FOR VORDME APPROACH FROM WEST & NORTHWEST



● By ATC



**HOLDINGS OVER**

