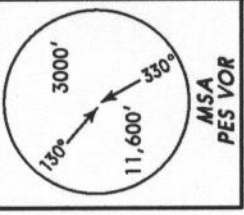


Apt Elev  
48'

Trans level: By ATC Trans alt: 5000'

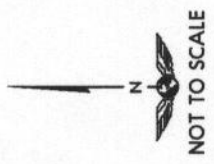
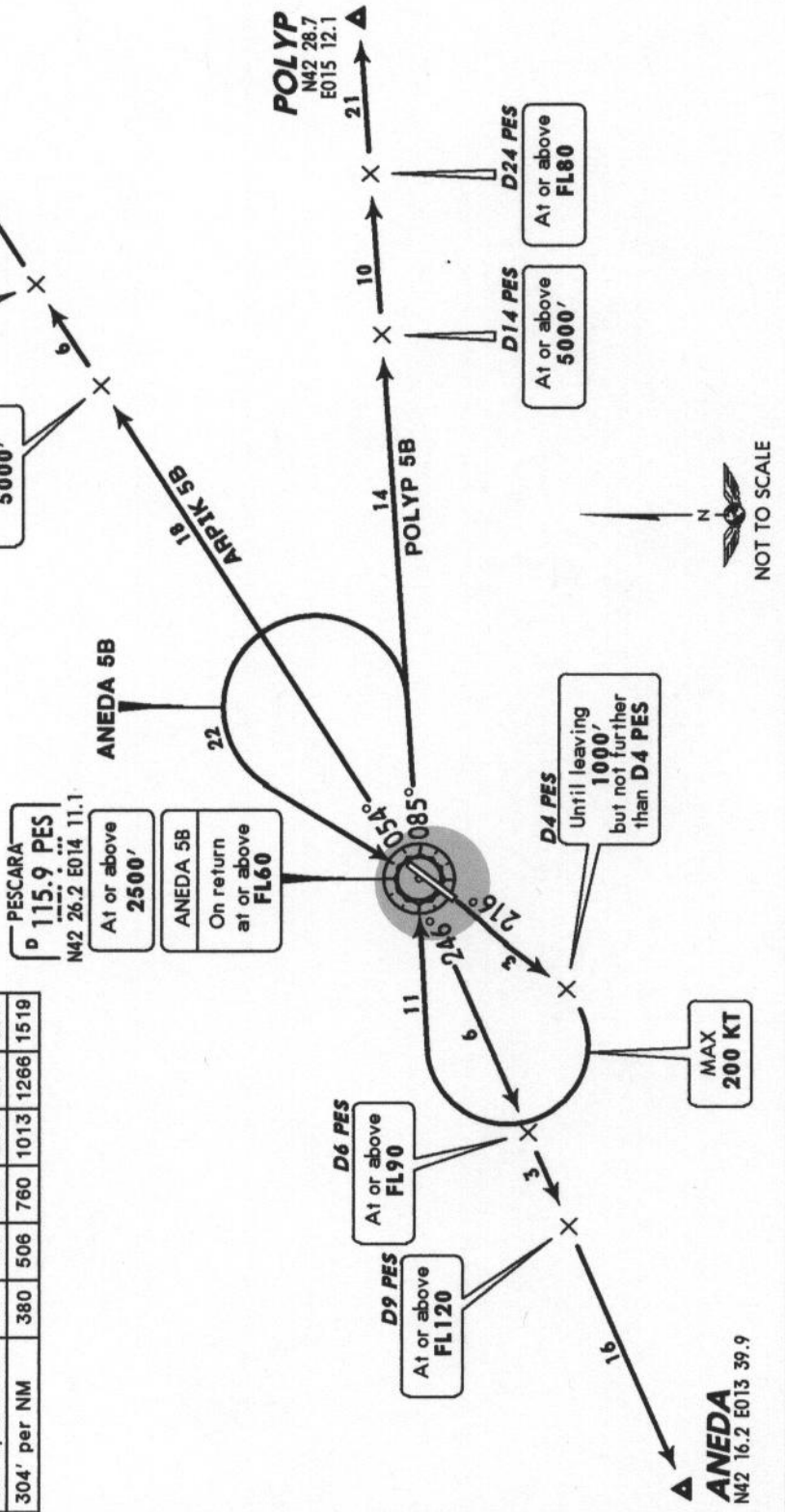


ANEDA 5B [ANED5B], ARPIK 5B [ARPI5B]  
POLYP 5B [POLY5B]  
RWY 22 DEPARTURES  
TO EAST & SOUTHWEST

SID	ROUTING
ANEDA 5B	Intercept PES R-216 until leaving 1000', but not further than D4 PES, turn RIGHT to PES, PES R-085, turn LEFT to PES, PES R-246 to ANEDA.
ARPIK 5B	Intercept PES R-216 until leaving 1000', but not further than D4 PES, turn RIGHT to PES, PES R-054 to ARPIK.
POLYP 5B	Intercept PES R-216 until leaving 1000', but not further than D4 PES, turn RIGHT to PES, PES R-085 to POLYP.

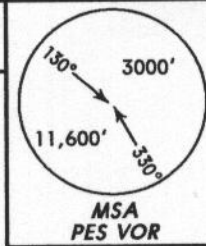
These SIDs require a minimum climb gradient of 304' per NM (5%).

Gnd speed-KT	75	100	150	200	250	300
304' per NM	380	506	760	1013	1266	1519



Apt Elev  
48'

Trans level: By ATC Trans alt: 5000'

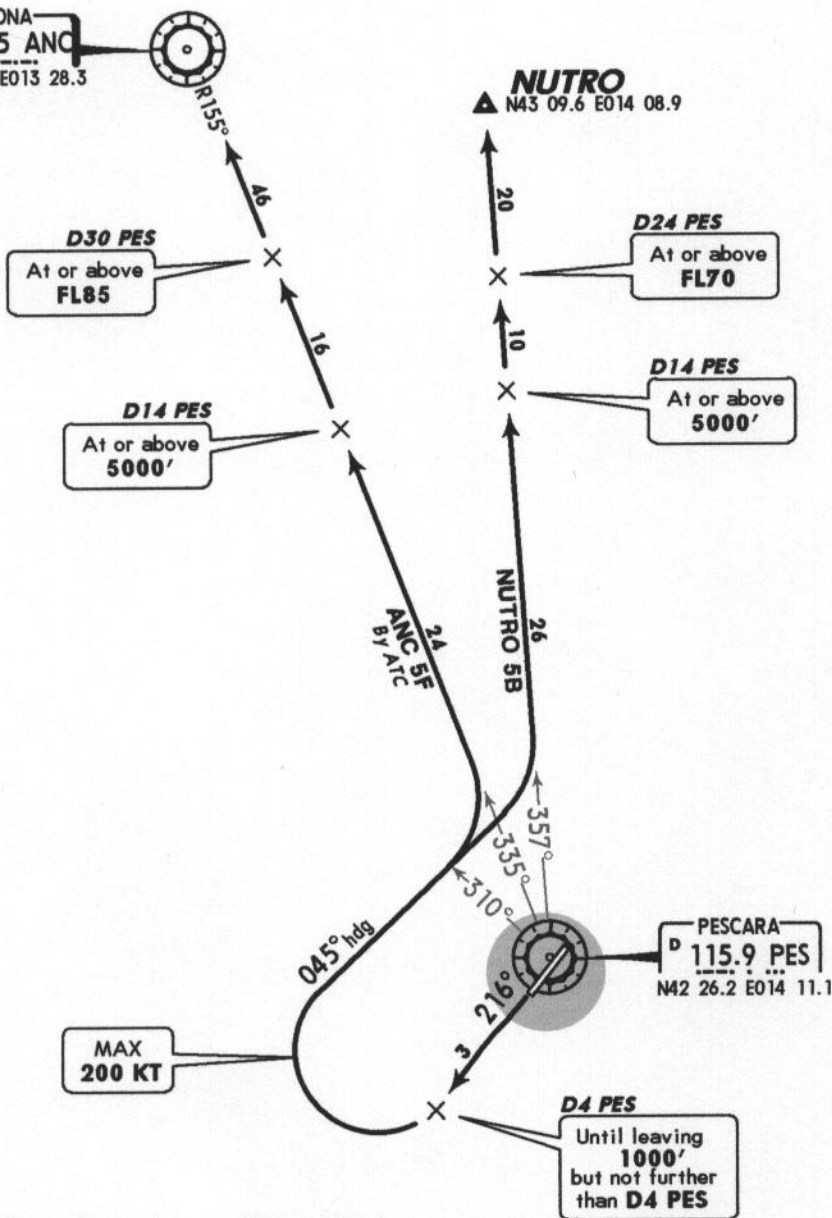


ANCONA 5F (ANC 5F), NUTRO 5B [NUTR5B]  
RWY 22 DEPARTURES  
TO NORTHWEST

ANCONA  
D 110.65 ANC  
N43 35.2 E013 28.3

NUTRO  
N43 09.6 E014 08.9

PESCARA  
D 115.9 PES  
N42 26.2 E014 11.1



MAX  
200 KT

D4 PES  
Until leaving  
1000'  
but not further  
than D4 PES

These SIDs require a minimum climb gradient of 304' per NM (5%).

Gnd speed-KT	75	100	150	200	250	300
304' per NM	380	506	760	1013	1266	1519



NOT TO SCALE

SID	ROUTING
ANC 5F BY ATC	Intercept PES R-216 until leaving 1000', but not further than D4 PES, turn RIGHT, 045° heading, at PES R-310 turn LEFT, intercept PES R-335 to ANC.
NUTRO 5B	Intercept PES R-216 until leaving 1000', but not further than D4 PES, turn RIGHT, 045° heading, intercept PES R-357 to NUTRO.