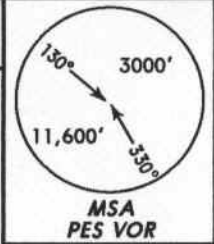
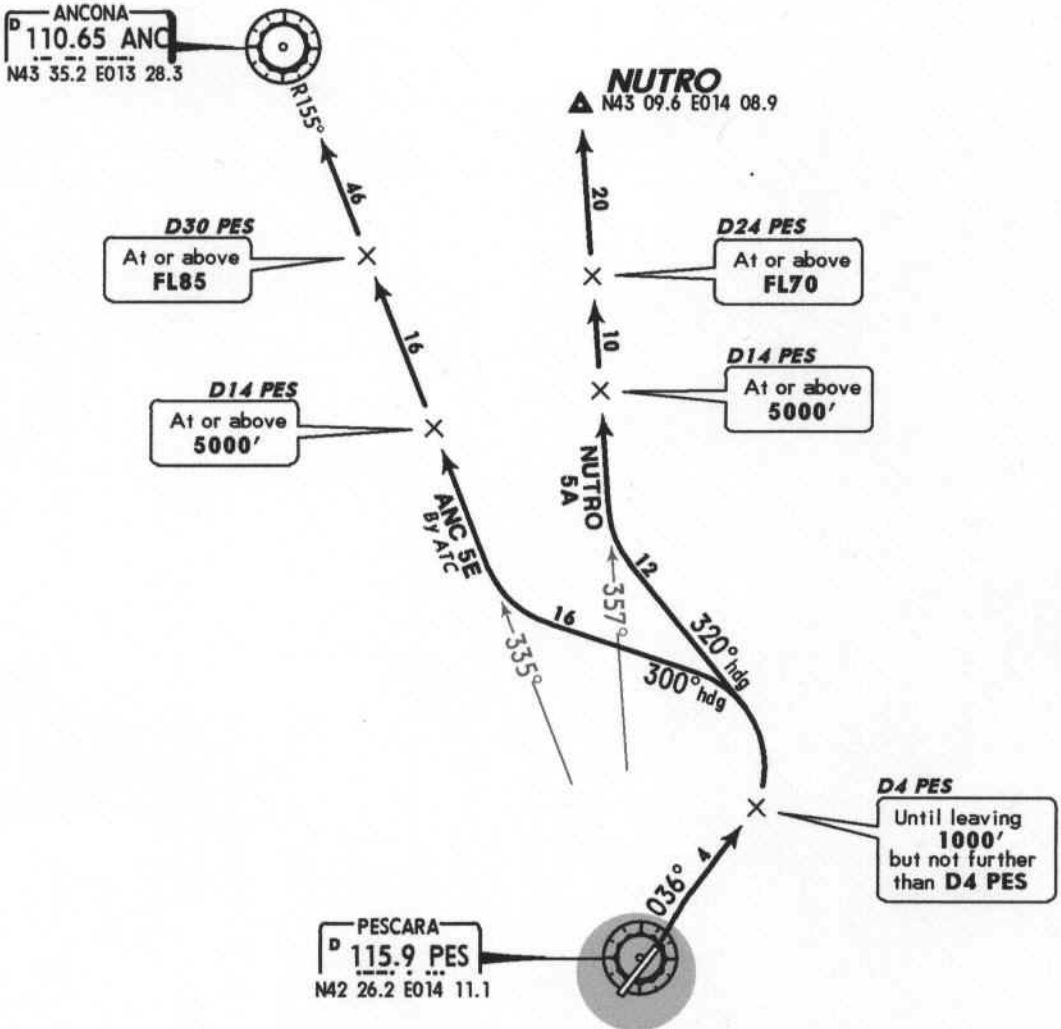


Apt Elev 48' Trans level: By ATC Trans alt: 5000'



ANCONA 5E (ANC 5E), NUTRO 5A [NUTR5A]
RWY 04 DEPARTURES
TO NORTHWEST



These SIDs require a minimum climb gradient of 304' per NM (5%).

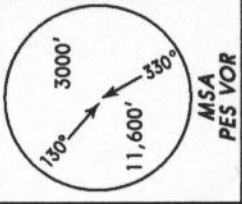
Gnd speed-KT	75	100	150	200	250	300
304' per NM	380	506	760	1013	1266	1519



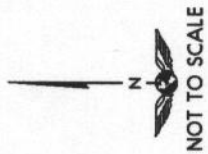
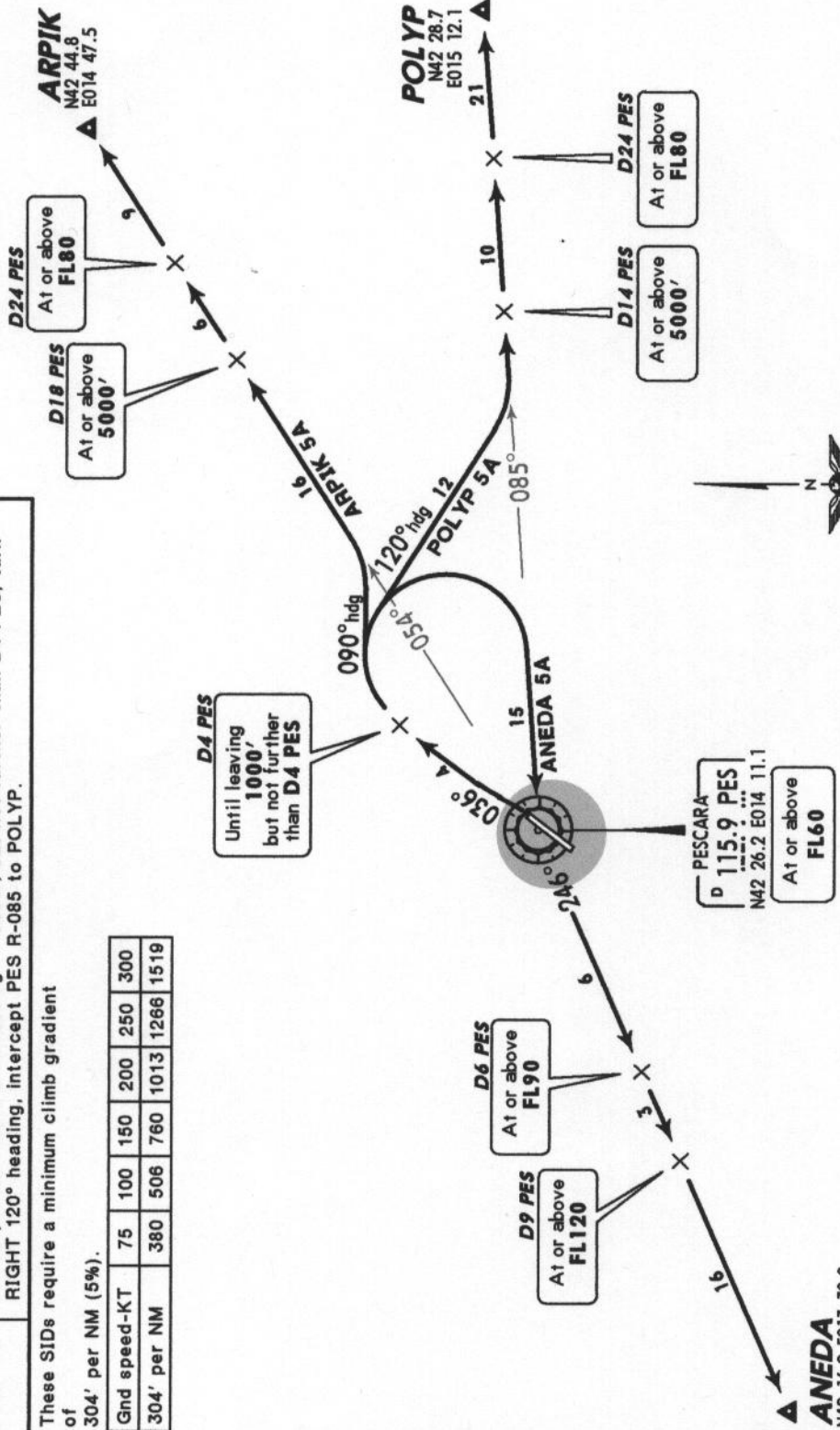
SID	ROUTING
ANC 5E BY ATC	Intercept PES R-036 until leaving 1000', but not further than D4 PES, turn LEFT, 300° heading, intercept PES R-335 to ANC.
NUTRO 5A	Intercept PES R-036 until leaving 1000', but not further than D4 PES, turn LEFT, 320° heading, intercept PES R-357 to NUTRO.

Apt Elev
48'

Trans level: By ATC Trans alt: 5000'



ANEDA 5A [ANED5A], ARPIK 5A [ARPI5A]
POLYP 5A [POLY5A]
RWY 04 DEPARTURES
TO EAST & SOUTHWEST



ROUTING

- ANEDA 5A** Intercept PES R-036 until leaving 1000', but not further than D4 PES, turn RIGHT to PES, PES R-246 to ANEDA.
- ARPIK 5A** Intercept PES R-036 until leaving 1000', but not further than D4 PES, turn RIGHT 090° heading, intercept PES R-054 to ARPIK.
- POLYP 5A** Intercept PES R-036 until leaving 1000', but not further than D4 PES, turn RIGHT 120° heading, intercept PES R-085 to POLYP.

These SIDs require a minimum climb gradient of 304' per NM (5%).

Gnd speed-KT	75	100	150	200	250	300
304' per NM	380	506	760	1013	1266	1519