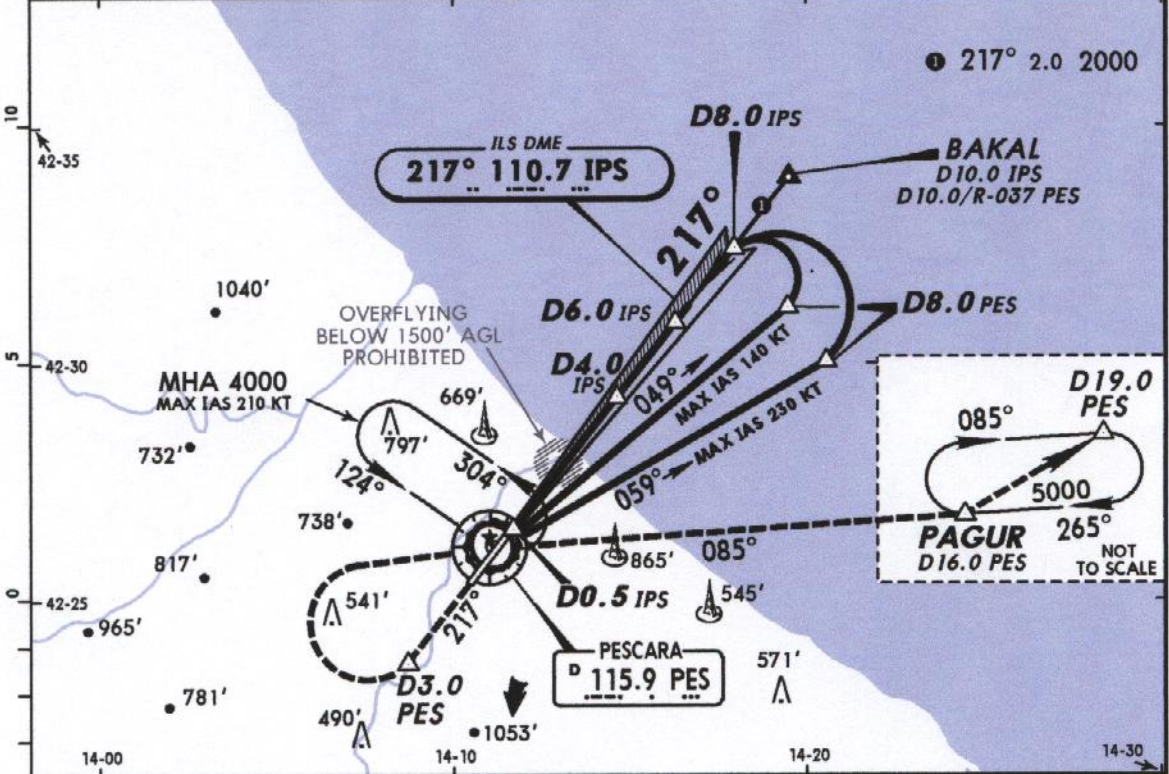
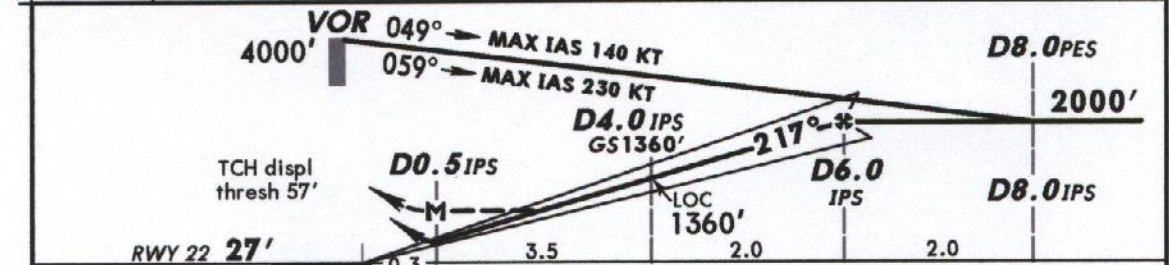


PESCARA Approach 120.05				PESCARA Tower 118.45	
LOC IPS 110.7	Final Apch Crs 217°	GS DA 0 IPS 1360' (1333')	ILS DA(H) Refer to Minimums	Apt Elev 48'	RWY 27'
MISSED APCH: Proceed on track 217° and climb to 5000'. Passing 1000' and not before D3.0 PES after VOR turn RIGHT (MAX IAS 185 KT) to VOR. Intercept and follow R-085 to PAGUR.					
Alt Set: hPa	Rwy Elev: 1 hPa	Trans level: By ATC	Trans alt: 5000'	MSA PES VOR	



LOC (GS out)	IPS DME	0.5	1.0	2.0	3.0	4.0
	ALTITUDE	240'	400'	720'	1040'	1360'



Gnd speed-Kts	70	90	100	120	140	160	
ILS GS 3.00° or LOC Descent Gradient 5.2%	377	485	539	647	755	862	
MAP at D0.5 IPS							

JAR-OPS STRAIGHT-IN LANDING RWY 22				CIRCLE-TO-LAND	
DA(H) ILS		LOC (GS out)		Not authorized Southeast of rwy	
A: 245' (218') C: 261' (234')		MDA(H) 500' (473')			
B: 253' (226') D: 272' (245')					
	FULL	ALS out	ALS out	Max Kts	MDA(H) VIS
A			RVR 1400m	100	1100' (1052') 1500m
B			RVR 1500m	135	1100' (1052') 1600m
C	RVR 800m	RVR 1000m	RVR 1600m	180	1200' (1152') 2400m
D			RVR 1800m	205	1300' (1252') 3600m

PESCARA Approach
120.05

PESCARA Tower
118.45

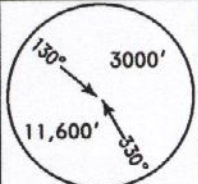
LOC
IPS
110.7

Final
Apch Crs
217°

GS
D4.0 IPS
1360' (1333')

ILS
DA(H)
Refer to
Minimums

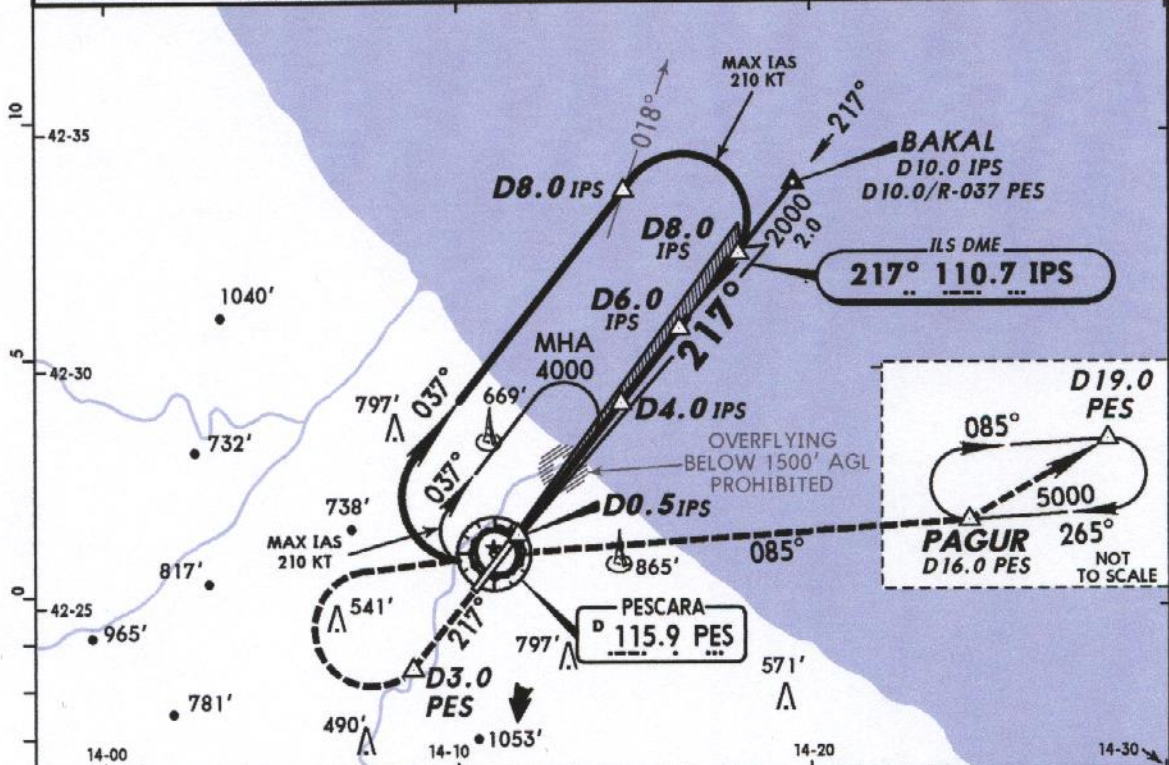
Apt Elev 48'
RWY 27'



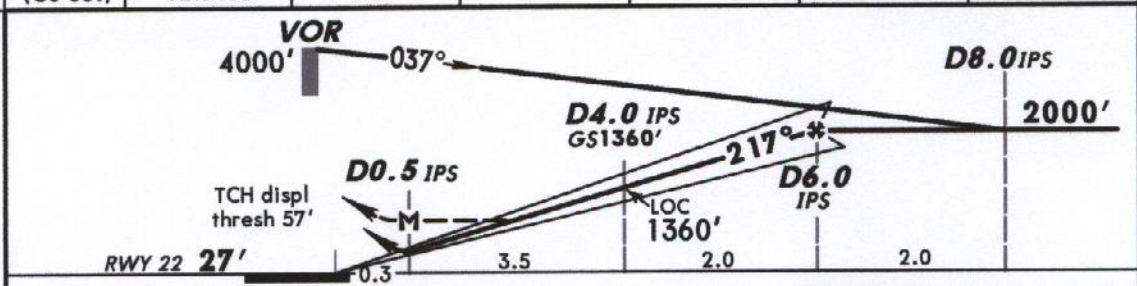
MISSED APCH: Proceed on track 217° and climb to 5000'. Passing 1000' and not before D3.0 PES after VOR turn RIGHT (MAX IAS 185 KT) to VOR. Intercept and follow R-085 to PAGUR.

Alt Set: hPa Rwy Elev: 1 hPa Trans level: By ATC Trans alt: 5000'

MSA PES VOR



LOC (GS out)	IPS DME	0.5	1.0	2.0	3.0	4.0
	ALTITUDE	240'	400'	720'	1040'	1360'



Gnd speed-Kts	70	90	100	120	140	160	
ILS GS 3.00° or LOC Descent Gradient 5.2%	377	485	539	647	755	862	
MAP at D0.5 IPS							

JAR-OPS				STRAIGHT-IN LANDING RWY 22		CIRCLE-TO-LAND	
DA(H) ILS		LOC (GS out)		Not authorized Southeast of rwy			
A: 245' (218') C: 261' (234')		MDA(H) 500' (473')					
B: 253' (226') D: 272' (245')							
	FULL	ALS out		ALS out	Max Kts	MDA(H)	VIS
A			RVR 1400m	RVR 1500m	100	1100' (1052')	1500m
B			RVR 1500m	RVR 1500m	135	1100' (1052')	1600m
C	RVR 800m	RVR 1000m	RVR 1600m	RVR 2000m	180	1200' (1152')	2400m
D			RVR 1800m		205	1300' (1252')	3600m