

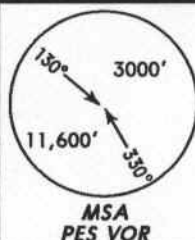
ADDITIONAL RUNWAY INFORMATION					
RWY		USABLE LENGTHS		TAKE-OFF	WIDTH
		LANDING BEYOND			
		Threshold	Glide Slope		
04	HIRL (60m) PAPI-L (3.0°) Circling guidance lights	7644' 2330m			148'
22	HIRL (60m) HIALS SFL PAPI-L (3.0°)	7244' 2208m	6158' 1877m		45m

JAR-OPS		TAKE-OFF	
		All Rwys	
		RCLM (DAY only) or RL	NIL (DAY only)
A			
B			
C	400m		500m
D			

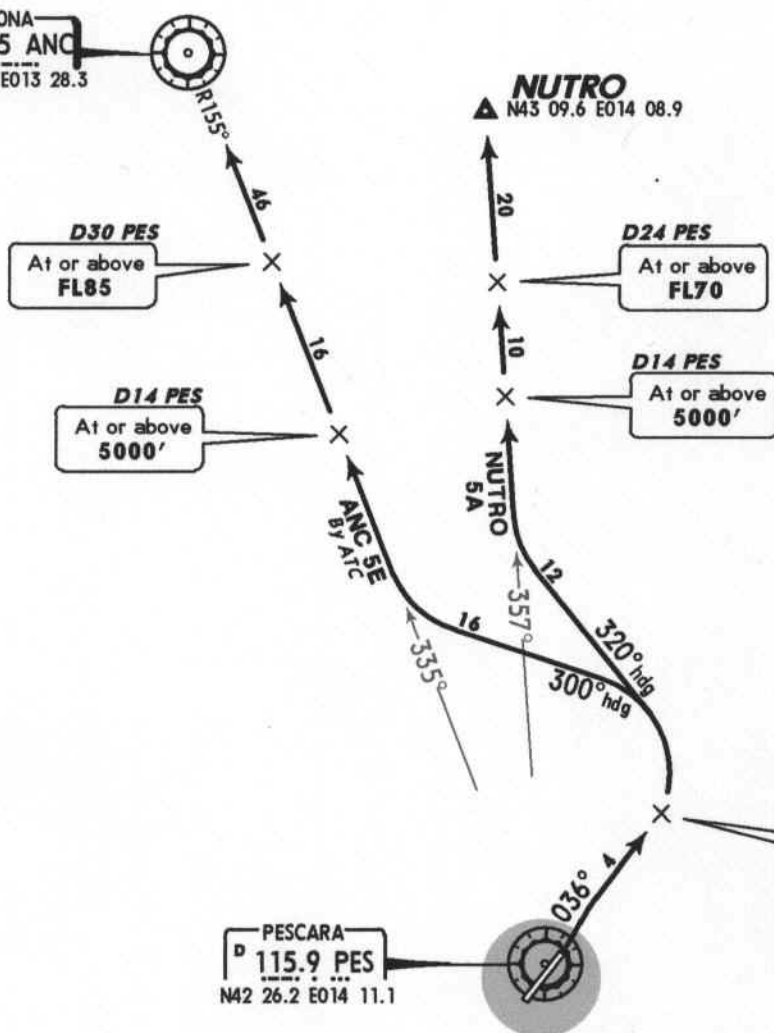
22 OCT 04 (10-3B)

Apt Elev  
48'

Trans level: By ATC Trans alt: 5000'

ANCONA 5E (ANC 5E), NUTRO 5A [NUTR5A]  
RWY 04 DEPARTURES  
TO NORTHWEST

ANCONA  
D 110.65 ANC  
N43 35.2 E013 28.3



PESCARA  
D 115.9 PES  
N42 26.2 E014 11.1

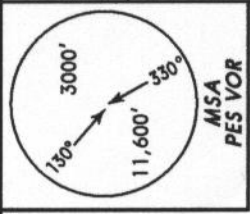
These SIDs require a minimum climb gradient  
of  
304' per NM (5%).

Gnd speed-KT	75	100	150	200	250	300
304' per NM	380	506	760	1013	1266	1519



SID	ROUTING
ANC 5E BY ATC	Intercept PES R-036 until leaving 1000', but not further than D4 PES, turn LEFT, 300° heading, intercept PES R-335 to ANC.
NUTRO 5A	Intercept PES R-036 until leaving 1000', but not further than D4 PES, turn LEFT, 320° heading, intercept PES R-357 to NUTRO.

Apt Elev 48'  
Trans level: By ATC Trans alt: 5000'

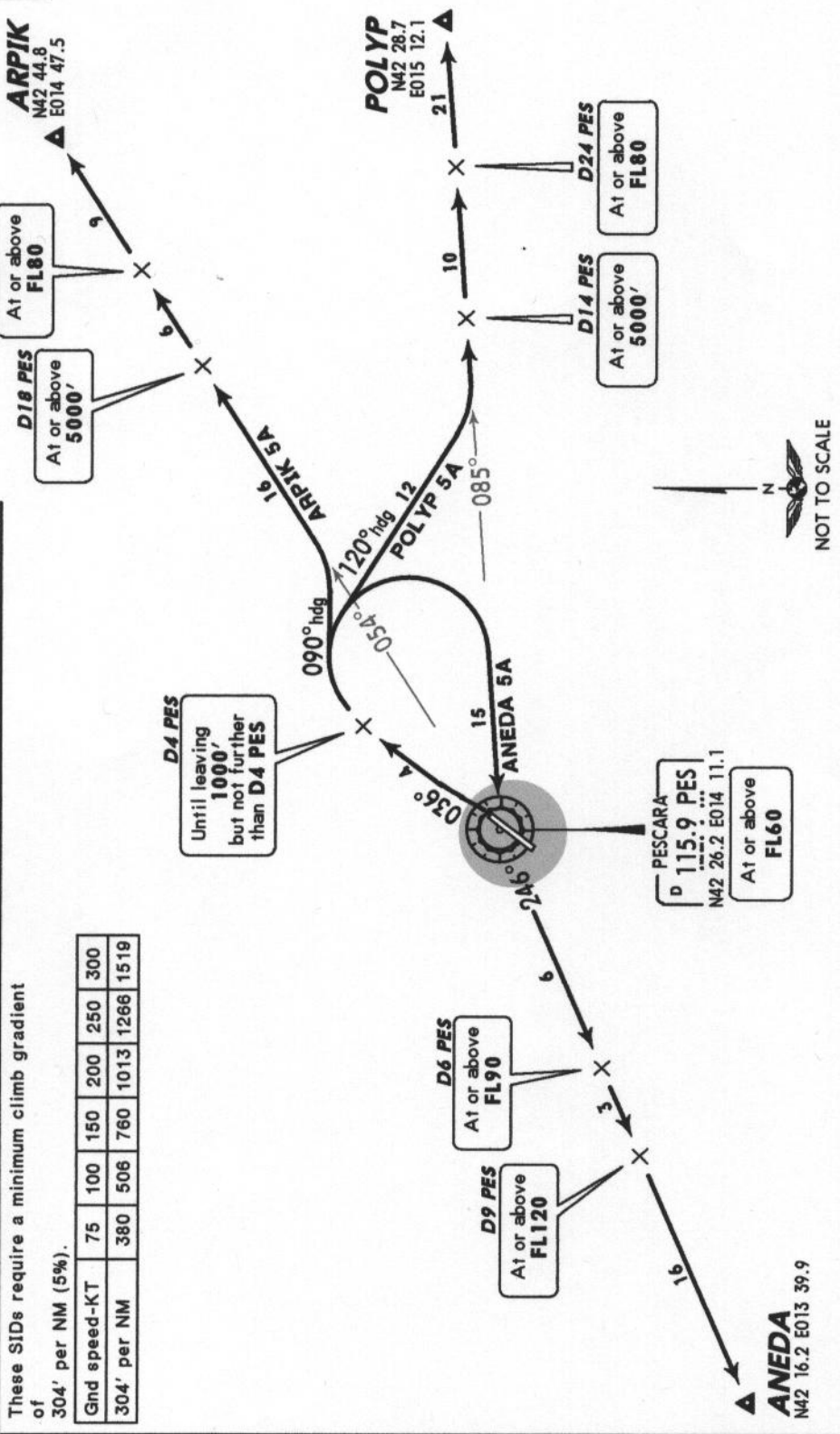


ANEDA 5A [ANED5A], ARPIK 5A [ARPI5A]  
POLYP 5A [POLY5A]  
RWY 04 DEPARTURES  
TO EAST & SOUTHWEST

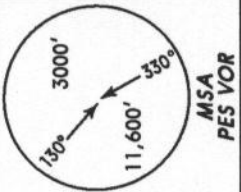
SID	ROUTING
ANEDA 5A	Intercept PES R-036 until leaving 1000', but not further than D4 PES, turn RIGHT to PES, PES R-246 to ANEDA.
ARPIK 5A	Intercept PES R-036 until leaving 1000', but not further than D4 PES, turn RIGHT 090° heading, intercept PES R-054 to ARPIK.
POLYP 5A	Intercept PES R-036 until leaving 1000', but not further than D4 PES, turn RIGHT 120° heading, intercept PES R-085 to POLYP.

These SIDs require a minimum climb gradient of 304' per NM (5%).

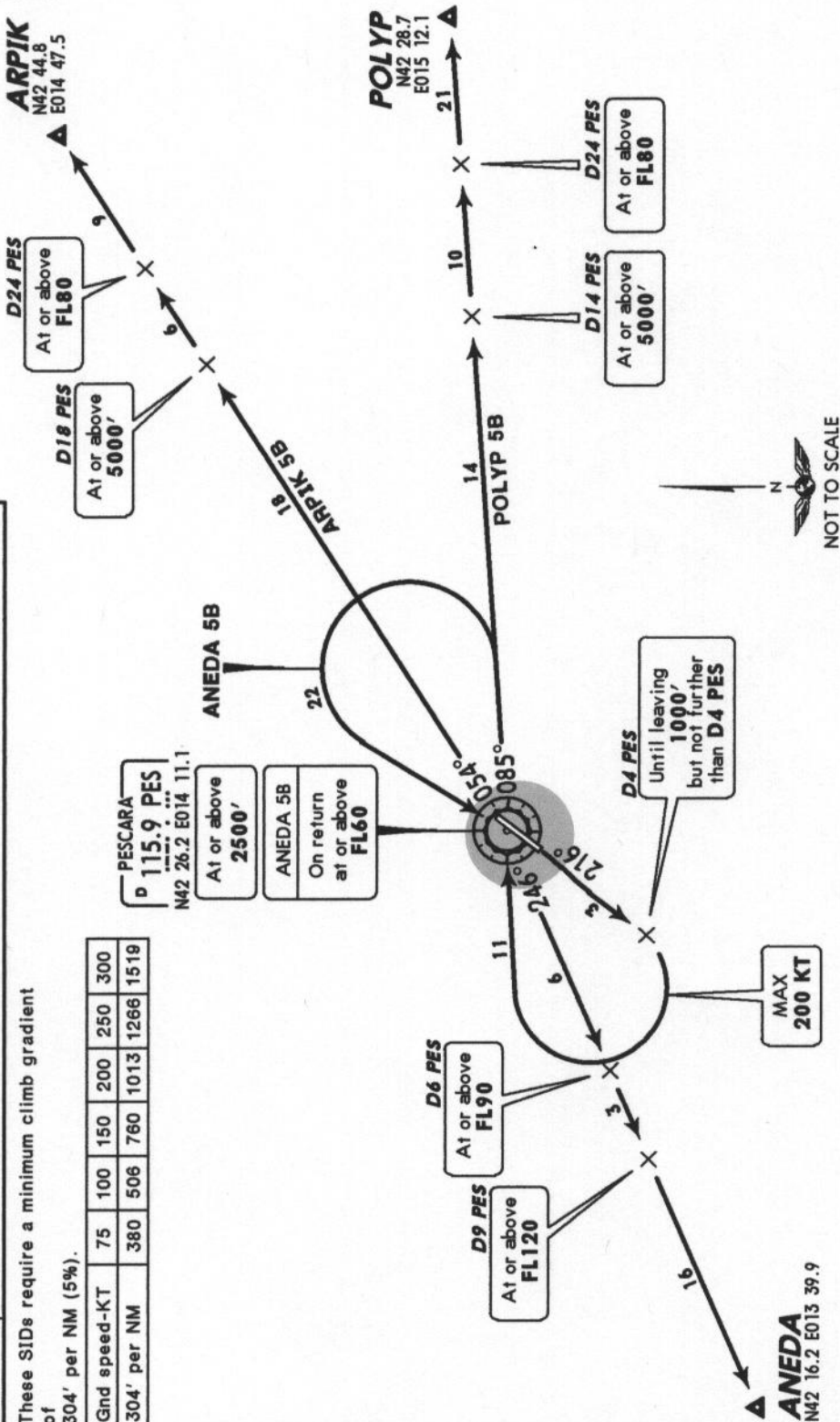
Gnd speed-KT	75	100	150	200	250	300
304' per NM	380	506	760	1013	1266	1519



Trans level: By ATC      Trans alt: 5000'



**ANEDA 5B [ANED5B], ARPIK 5B [ARPI5B]  
POLYP 5B [POLY5B]  
RWY 22 DEPARTURES  
TO EAST & SOUTHWEST**



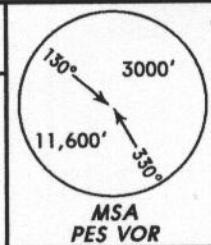
SID	ROUTING
ANEDA 5B	Intercept PES R-216 until leaving 1000', but not further than D4 PES, turn RIGHT to PES, PES R-085, turn LEFT to PES, PES R-248 to ANEDA.
ARPIK 5B	Intercept PES R-216 until leaving 1000', but not further than D4 PES, turn RIGHT to PES, PES R-054 to ARPIK.
POLYP 5B	Intercept PES R-216 until leaving 1000', but not further than D4 PES, turn RIGHT to PES, PES R-085 to POLYP.

of  
These SIDs require a minimum climb gradient  
304' per NM (5%).

Gnd speed-KT	75	100	150	200	250	300
304' per NM	380	506	760	1013	1266	1519

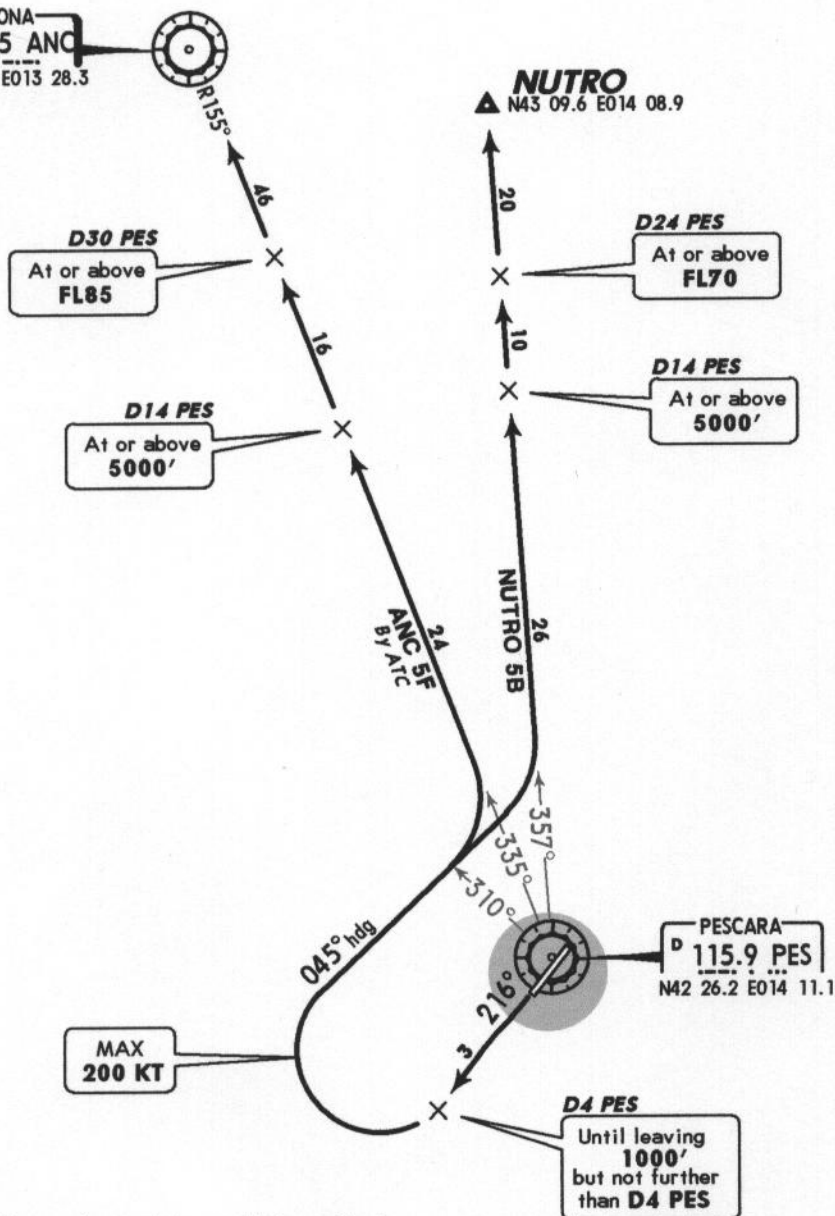
Apt Elev  
48'

Trans level: By ATC Trans alt: 5000'



ANCONA 5F (ANC 5F), NUTRO 5B [NUTR5B]  
RWY 22 DEPARTURES  
TO NORTHWEST

ANCONA  
D 110.65 ANC  
N43 35.2 E013 28.3



These SIDs require a minimum climb gradient of 304' per NM (5%).

Gnd speed-KT	75	100	150	200	250	300
304' per NM	380	506	760	1013	1266	1519

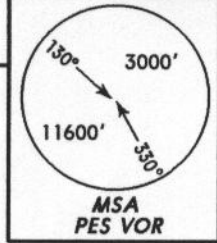


SID	ROUTING
ANC 5F BY ATC	Intercept PES R-216 until leaving 1000', but not further than D4 PES, turn RIGHT, 045° heading, at PES R-310 turn LEFT, intercept PES R-335 to ANC.
NUTRO 5B	Intercept PES R-216 until leaving 1000', but not further than D4 PES, turn RIGHT, 045° heading, intercept PES R-357 to NUTRO.



Apt Elev  
48'

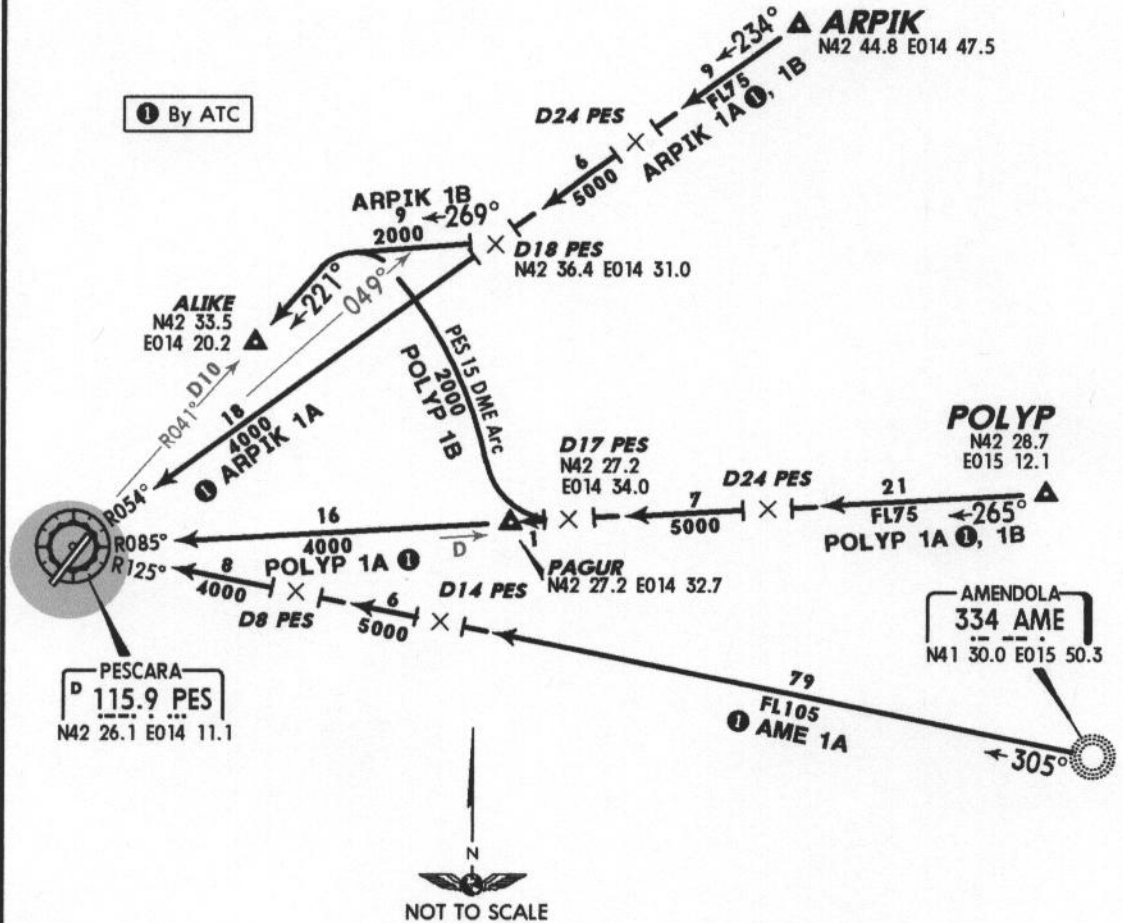
Alt Set: hPa Trans level: By ATC Trans alt: 5000'.



AME 1A ●  
ARPIK 1A ●  
ARPIK 1B  
POLYP 1A ●  
POLYP 1B

RWY 22 ARRIVALS  
FOR VORDME APPROACH FROM NORTHEAST & EAST

① By ATC



HOLDINGS OVER

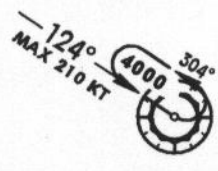
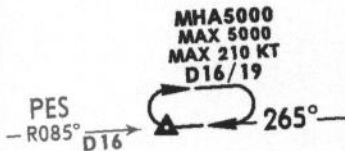
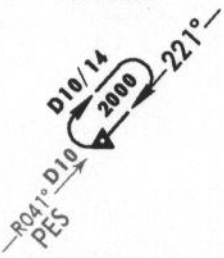
ALIKE

PAGUR  
By ATC

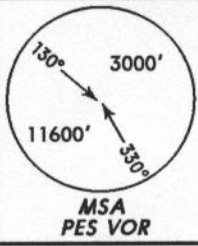
PES

For VORDME-Papa  
and VOR-Papa  
Approach

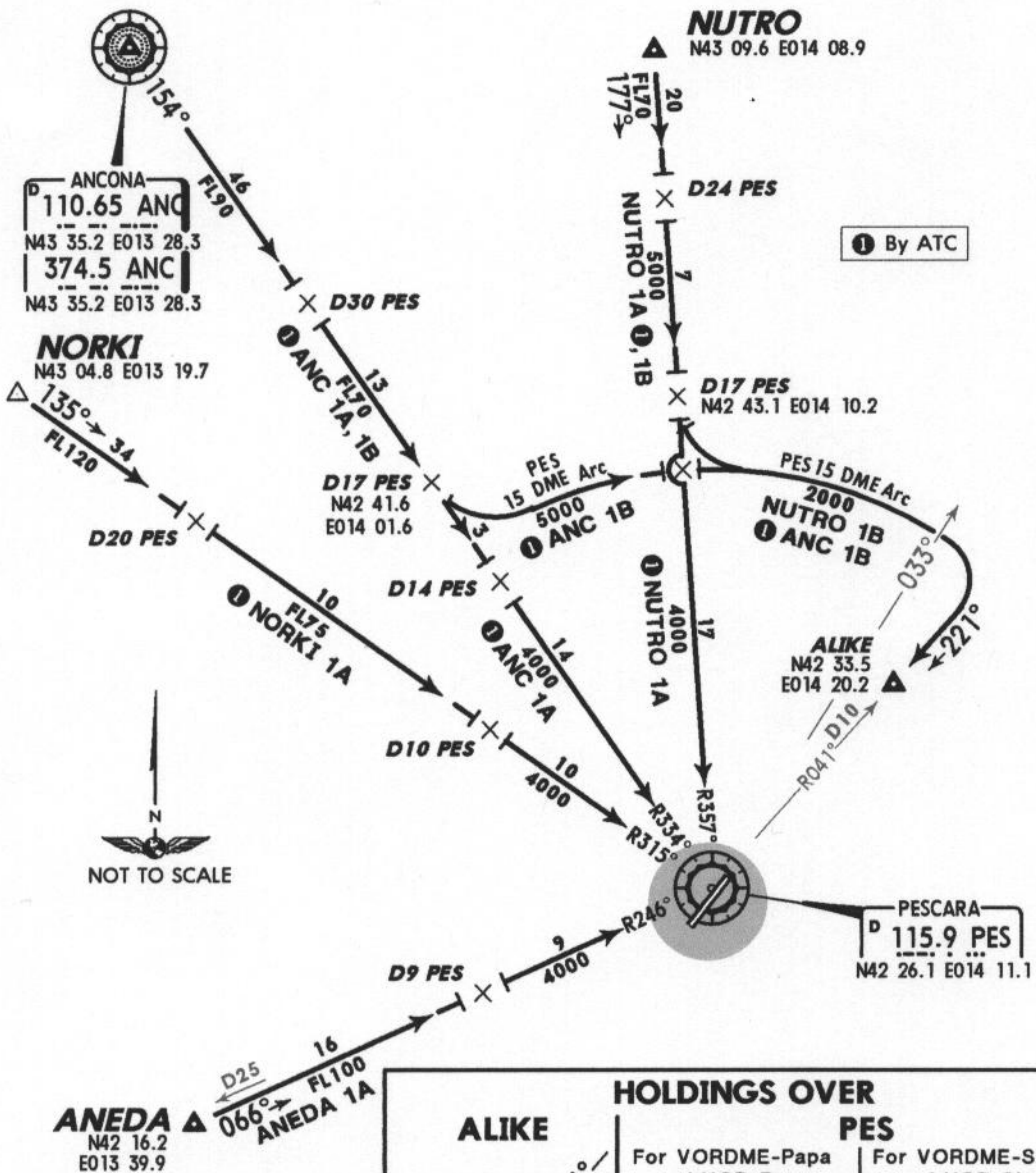
For VORDME-Sierra  
and VOR-Sierra  
Approach



Apt Elev 48' Alt Set: hPa Trans level: By ATC Trans alt: 5000'.

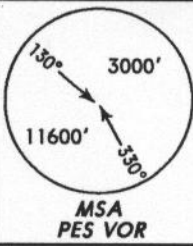


ANC 1A ●  
ANC 1B ●  
ANEDA 1A  
NORKI 1A ●  
NUTRO 1A  
NUTRO 1B  
**RWY 22 ARRIVALS**  
FOR VORDME APPROACH FROM WEST & NORTHWEST

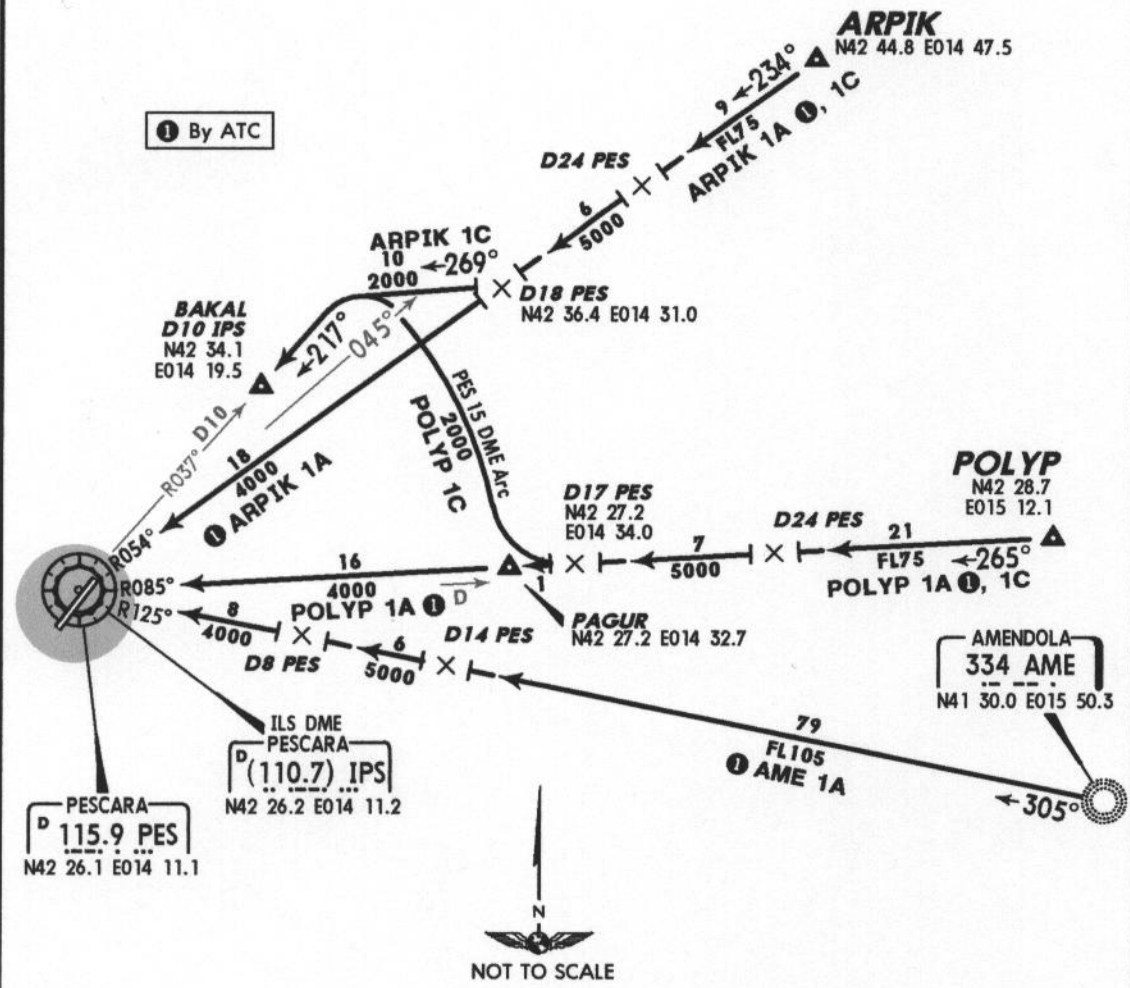


HOLDINGS OVER		
<b>ALIKE</b>	<b>PES</b>	
For VORDME-Papa and VOR-Papa Approach	For VORDME-Sierra and VOR-Sierra Approach	

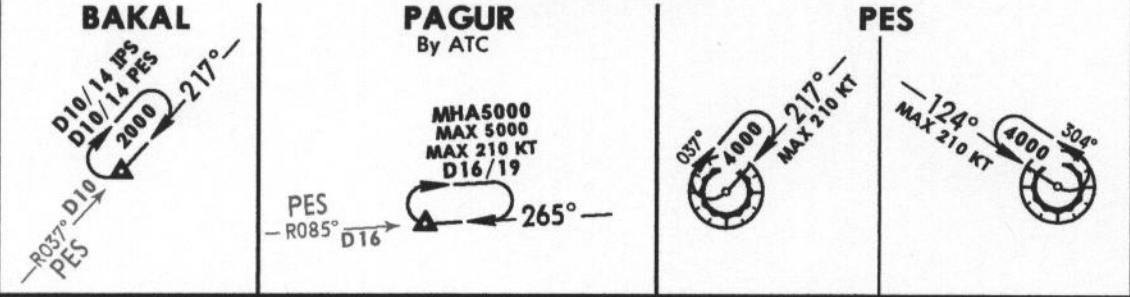
Apt Elev 48' Alt Set: hPa Trans level: By ATC Trans alt: 5000'.



AME 1A ①  
ARPIK 1A ①  
ARPIK 1C  
POLYP 1A ①  
POLYP 1C [POLY1C]  
RWY 22 ARRIVALS  
FOR ILSDME APPROACH FROM NORTHEAST & EAST

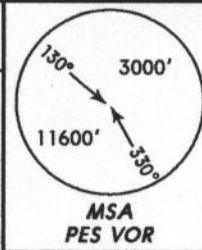


HOLDINGS OVER





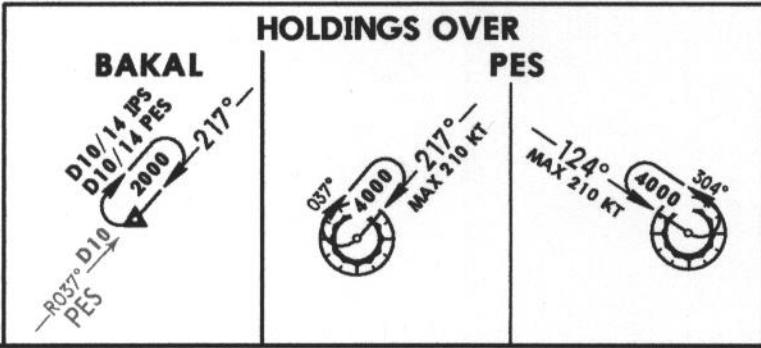
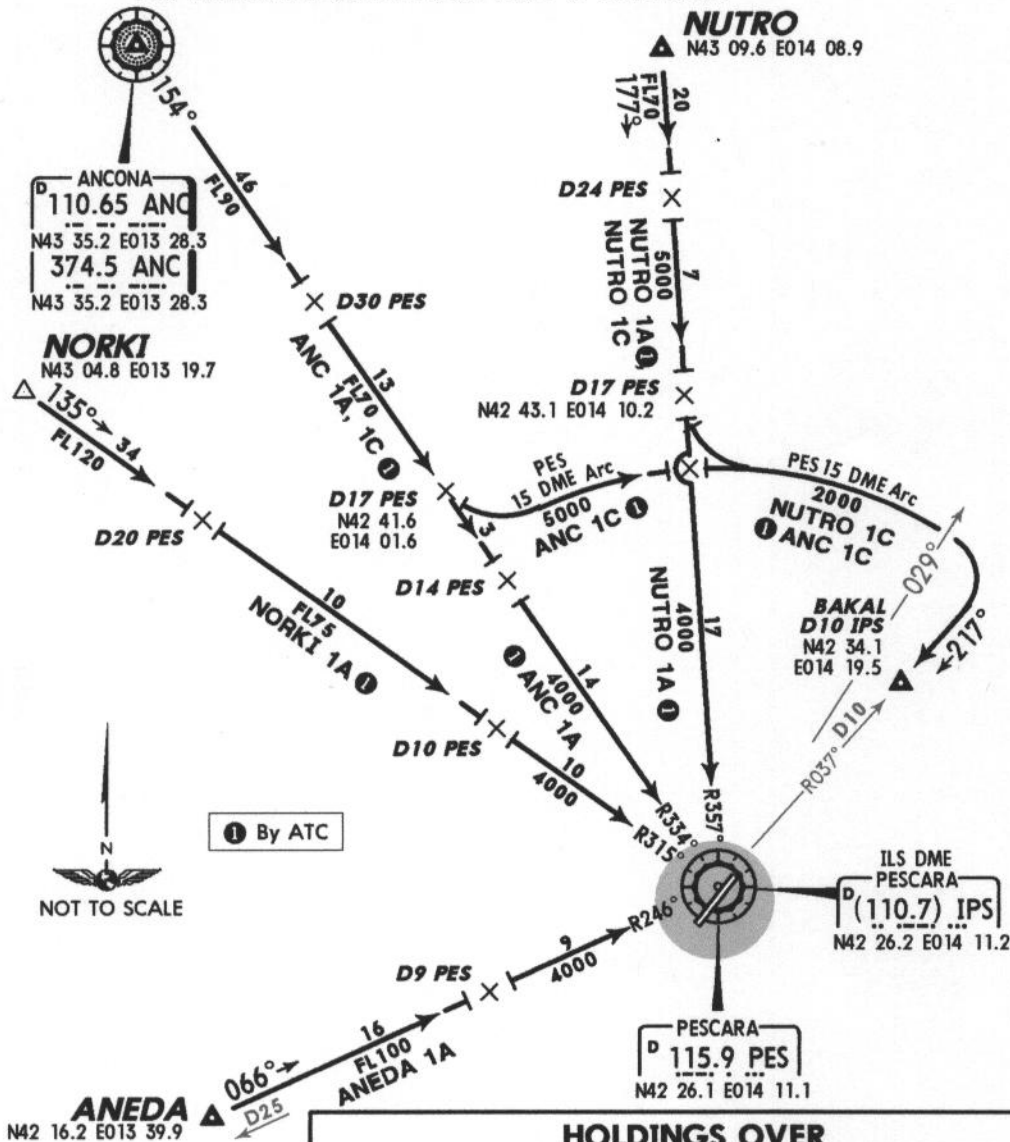
Apt Elev 48' Alt Set: hPa Trans level: By ATC Trans alt: 5000'



- ANC 1A ①
- ANC 1C ①
- ANEDA 1A
- NORKI 1A ①
- NUTRO 1A ①
- NUTRO 1C

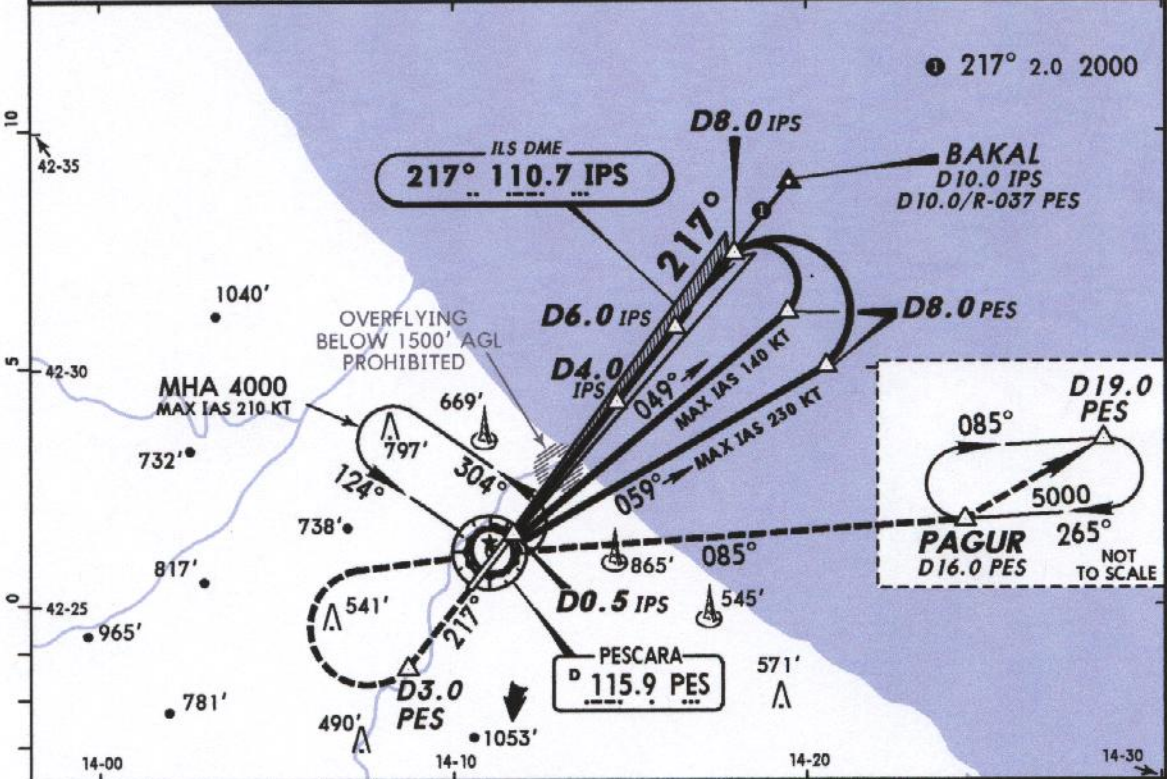
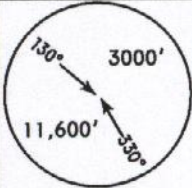
RWY 22 ARRIVALS

FOR ILSDME APPROACH FROM WEST & NORTHWEST

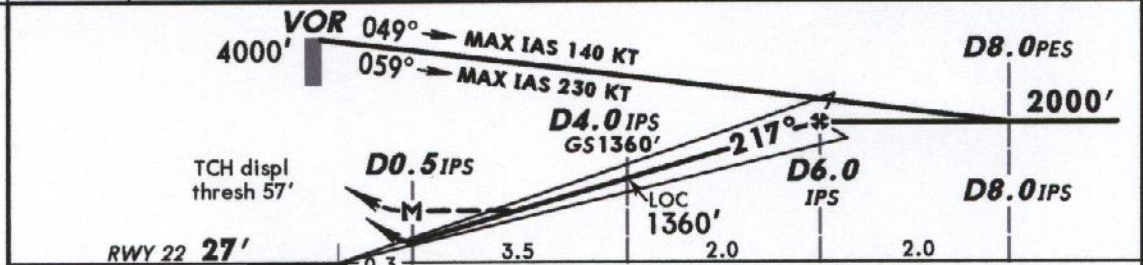


BRIEFING STRIP™

PESCARA Approach 120.05				PESCARA Tower 118.45	
LOC IPS 110.7	Final Apch Crs 217°	GS D4.0 IPS 1360' (1333')	ILS DA(H) Refer to Minimums	Apt Elev 48'	RWY 27'
MISSED APCH: Proceed on track 217° and climb to 5000'. Passing 1000' and not before D3.0 PES after VOR turn RIGHT (MAX IAS 185 KT) to VOR. Intercept and follow R-085 to PAGUR.					
Alt Set: hPa		Rwy Elev: 1 hPa	Trans level: By ATC	Trans alt: 5000'	MSA PES VOR



LOC (GS out)	IPS DME ALTITUDE	0.5	1.0	2.0	3.0	4.0
		240'	400'	720'	1040'	1360'



Gnd speed-Kts	70	90	100	120	140	160
ILS GS 3.00° or LOC Descent Gradient 5.2%	377	485	539	647	755	862
MAP at D0.5 IPS						

JAR-OPS STRAIGHT-IN LANDING RWY 22				CIRCLE-TO-LAND	
DA(H) ILS A: 245' (218') C: 261' (234') B: 253' (226') D: 272' (245')		LOC (GS out) MDA(H) 500' (473')		Not authorized Southeast of rwy	
FULL		ALS out		Max Kts	MDA(H) VIS
RVR 800m	RVR 1000m	RVR 1400m	RVR 1500m	100	1100' (1052') 1500m
		RVR 1500m		135	1100' (1052') 1600m
		RVR 1600m	RVR 2000m	180	1200' (1152') 2400m
		RVR 1800m		205	1300' (1252') 3600m

PANS OPS 4



LIBP/PSR  
PESCARAJEPPesen  
26 MAR 04 (11-1)PESCARA, ITALY  
ILS DME-Papa Rwy 22PESCARA Approach  
120.05PESCARA Tower  
118.45LOC  
IPS  
110.7Final  
Apch Crs  
217°GS  
D4.0 IPS  
1360' (1333')ILS  
DA(H)  
Refer to  
MinimumsApt Elev 48'  
RWY 27'

**MISSED APCH:** Proceed on track 217° and climb to 5000'. Passing 1000' and not before D3.0 PES after VOR turn RIGHT (MAX IAS 185 KT) to VOR. Intercept and follow R-085 to PAGUR.

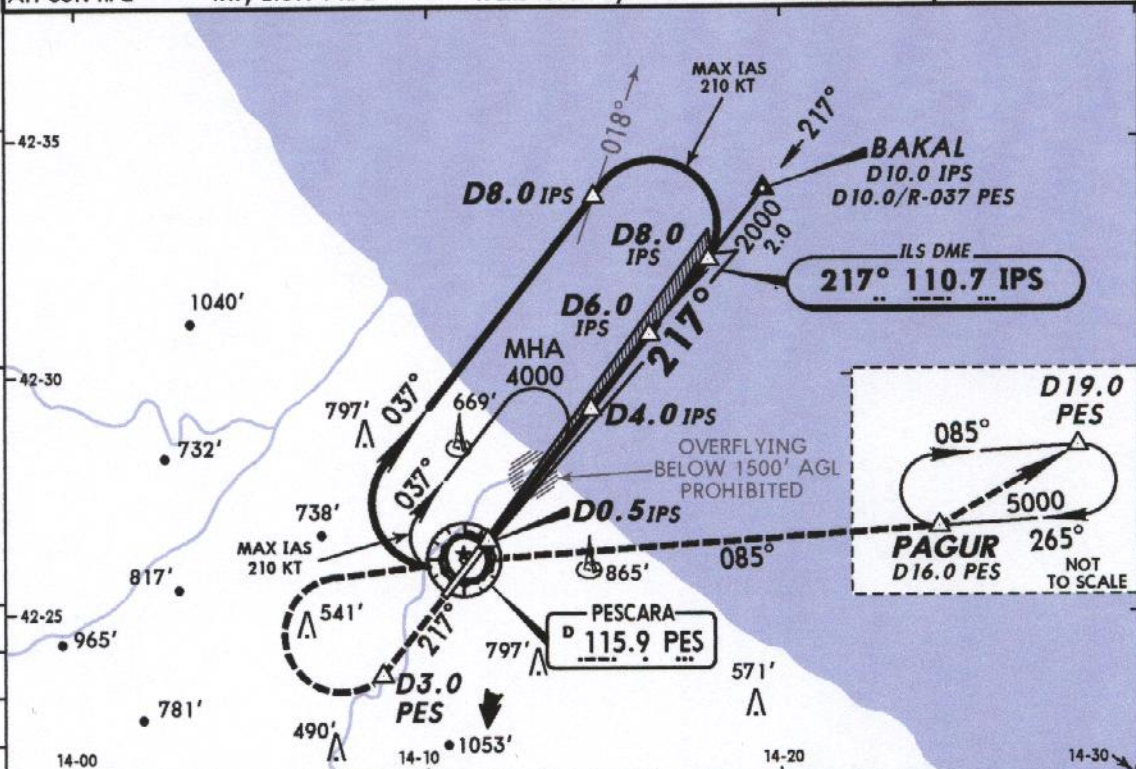
Alt Set: hPa

Rwy Elev: 1 hPa

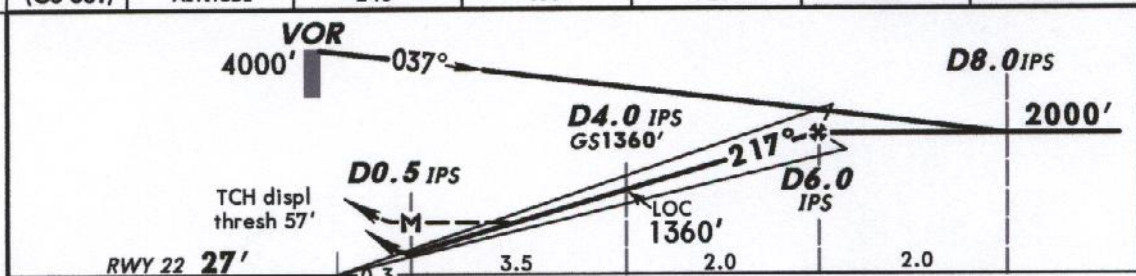
Trans level: By ATC

Trans alt: 5000'

MSA PES VOR



LOC (GS out)	IPS DME ALTITUDE	0.5	1.0	2.0	3.0	4.0
		240'	400'	720'	1040'	1360'



Gnd speed-Kts	70	90	100	120	140	160
ILS GS 3.00° or LOC Descent Gradient 5.2%	377	485	539	647	755	862
MAP at D0.5 IPS						

JAR-OPS				STRAIGHT-IN LANDING RWY 22		CIRCLE-TO-LAND	
ILS		LOC (GS out)		Not authorized Southeast of rwy			
DA(H)		MDA(H) 500' (473')					
A: 245' (218') C: 261' (234')							
B: 253' (226') D: 272' (245')							
FULL		ALS out		ALS out		Max Kts	
A		RVR 800m		RVR 1400m		100	
B		RVR 1000m		RVR 1500m		135	
C				RVR 1600m		180	
D				RVR 1800m		205	
						MDA(H)	
						VIS	
						1100' (1052')	
						1500m	
						1100' (1052')	
						1600m	
						1200' (1152')	
						2400m	
						1300' (1252')	
						3600m	

CHANGES: Minimums.

© JEPPesen SANDERSON, INC., 1999, 2004. ALL RIGHTS RESERVED

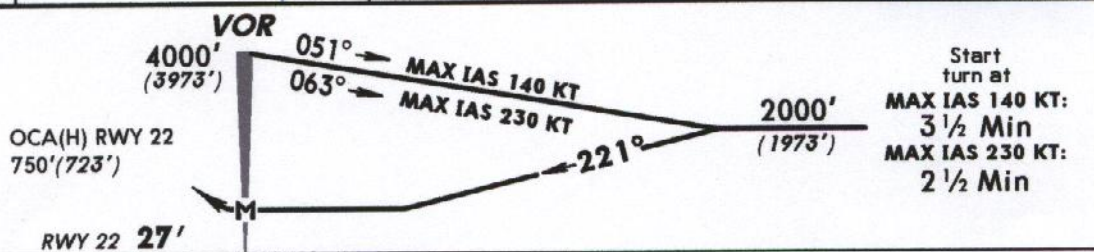
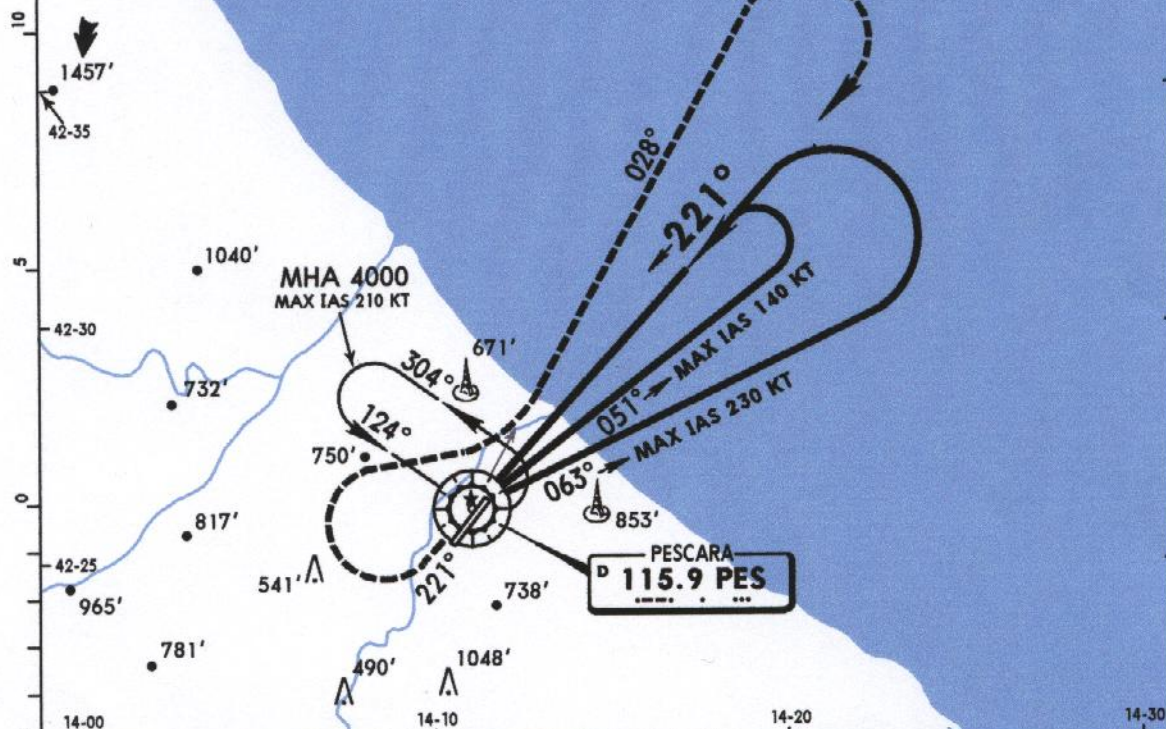


LIBP  
PESCARAJEPPESEN  
27 AUG 99 (13-4)PESCARA, ITALY  
VOR-Sierra Rwy 22PESCARA Approach  
120.05PESCARA Tower  
118.45VOR  
PES  
115.9Final  
Apch Crs  
221°Minimum Alt  
No FAFMDA(H)  
750' (723')Apt Elev 48'  
RWY 27'

**MISSED APCH:** Climb on track 221° to 1000', then turn RIGHT (MAX IAS 230 KT) to intercept and follow R-028 climbing to 4000', then turn RIGHT to VOR.

Alt Set: hPa Rwy Elev: 1 hPa Trans level: By ATC Trans alt: 5000' (4973')

MSA PES VOR



MAP at VOR

JAR-OPS

STRAIGHT-IN LANDING RWY 22

MDA(H) 750' (723')

ALS out

Max  
Kts.

			CIRCLE-TO-LAND	
			Not authorized Southeast of rwy	
A	RVR 1500m		100	1100' (1052') 1500m
B			135	1100' (1052') 1600m
C	RVR 1800m	RVR 2000m	180	1200' (1152') 2400m
D	RVR 2000m		205	1300' (1252') 3600m

CHANGES: Minimums. New chart format.

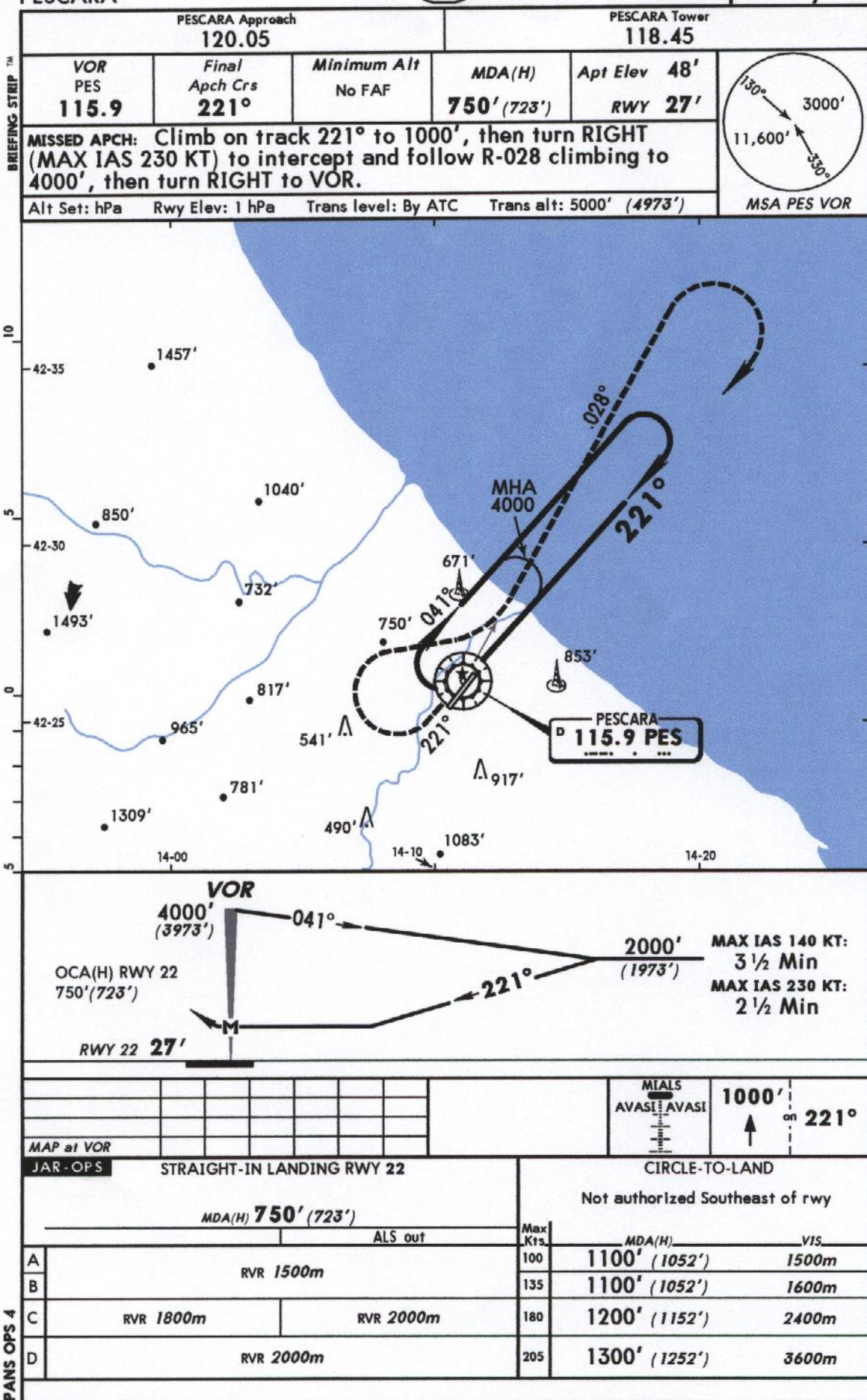
© JEPPESEN SANDERSON, INC., 1999. ALL RIGHTS RESERVED



LIBP  
PESCARA

JEPPesen

27 AUG 99 (13-3)

PESCARA, ITALY  
VOR-Papa Rwy 22

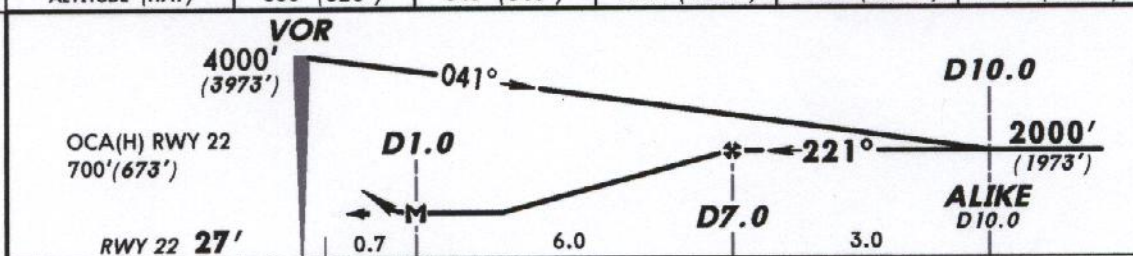
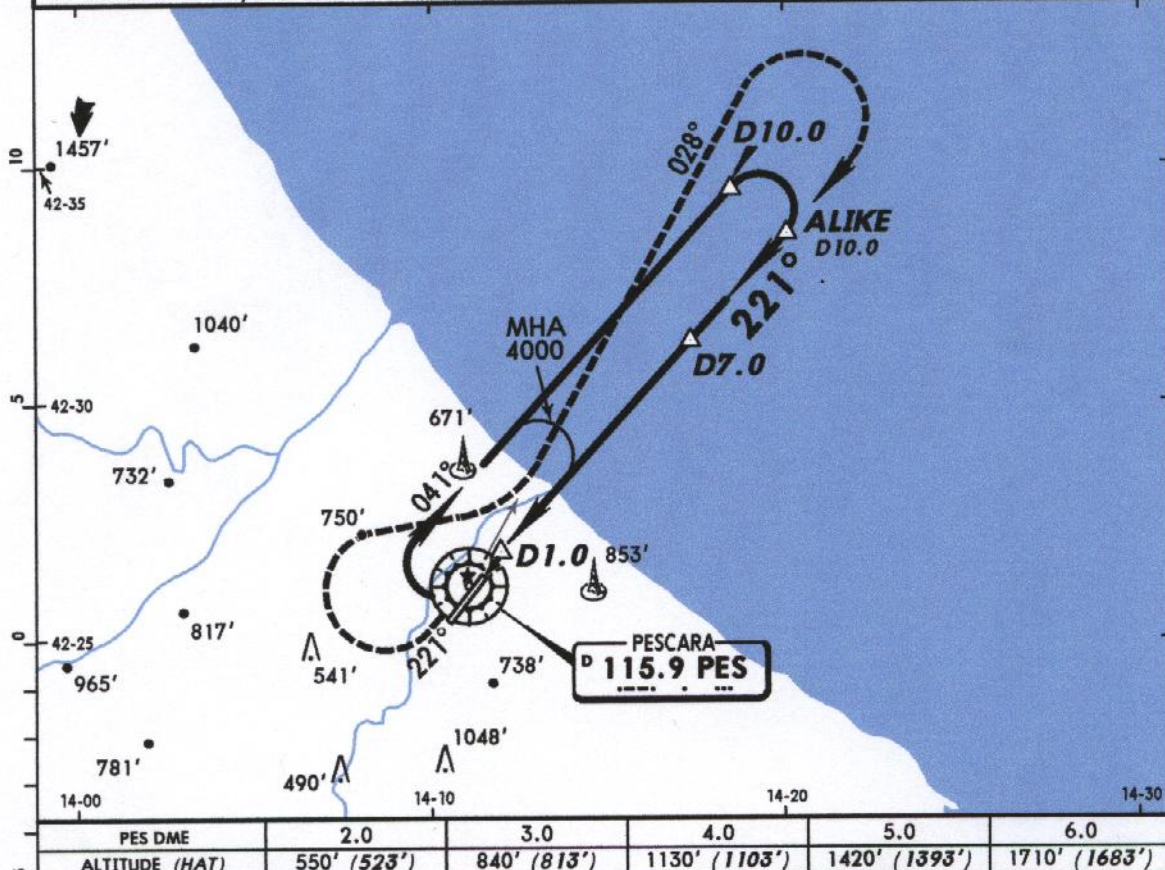


LIBP  
PESCARAJEPPESEN  
27 AUG 99 (13-1)PESCARA, ITALY  
VOR DME-Papa Rwy 22PESCARA Approach  
120.05PESCARA Tower  
118.45VOR  
PES  
115.9Final  
Apch Crs  
221°Minimum Alt  
D7.0  
2000' (1973')MDA(H)  
700' (673')Apt Elev 48'  
RWY 27'

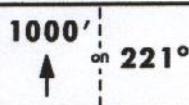
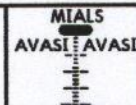
**MISSED APCH:** Climb on track 221° to 1000', then turn RIGHT (MAX IAS 230 KT) to intercept and follow R-028 climbing to 4000', then turn RIGHT to VOR.

Alt Set: hPa Rwy Elev: 1 hPa Trans level: By ATC Trans alt: 5000' (4973')

MSA PES VOR



Gnd speed-Kts	70	90	100	120	140	160
Descent Gradient 4.8%	340	437	486	583	681	778
MAP at D1.0						



JAR - OPS			STRAIGHT-IN LANDING RWY 22		CIRCLE-TO-LAND		
			MDA(H) <b>700'</b> (673')		Not authorized Southeast of rwy		
			ALS out		Max Kts	MDA(H)	VIS
A	RVR 1500m				100	1100' (1052')	1500m
B					135	1100' (1052')	1600m
C	RVR 1800m	RVR 2000m			180	1200' (1152')	2400m
D	RVR 2000m				205	1300' (1252')	3600m

CHANGES: Minimums. New chart format.

© JEPPESEN SANDERSON, INC., 1999. ALL RIGHTS RESERVED



LIBP  
PESCARA

JEPPESEN  
27 AUG 99 13-2

PESCARA, ITALY  
VOR DME-Sierra Rwy 22

PESCARA Approach

PESCARA Tower

120.05

118.45

VOR  
PES  
115.9

Final  
Apch Crs  
221°

Minimum Alt  
D7.0  
2000' (1973')

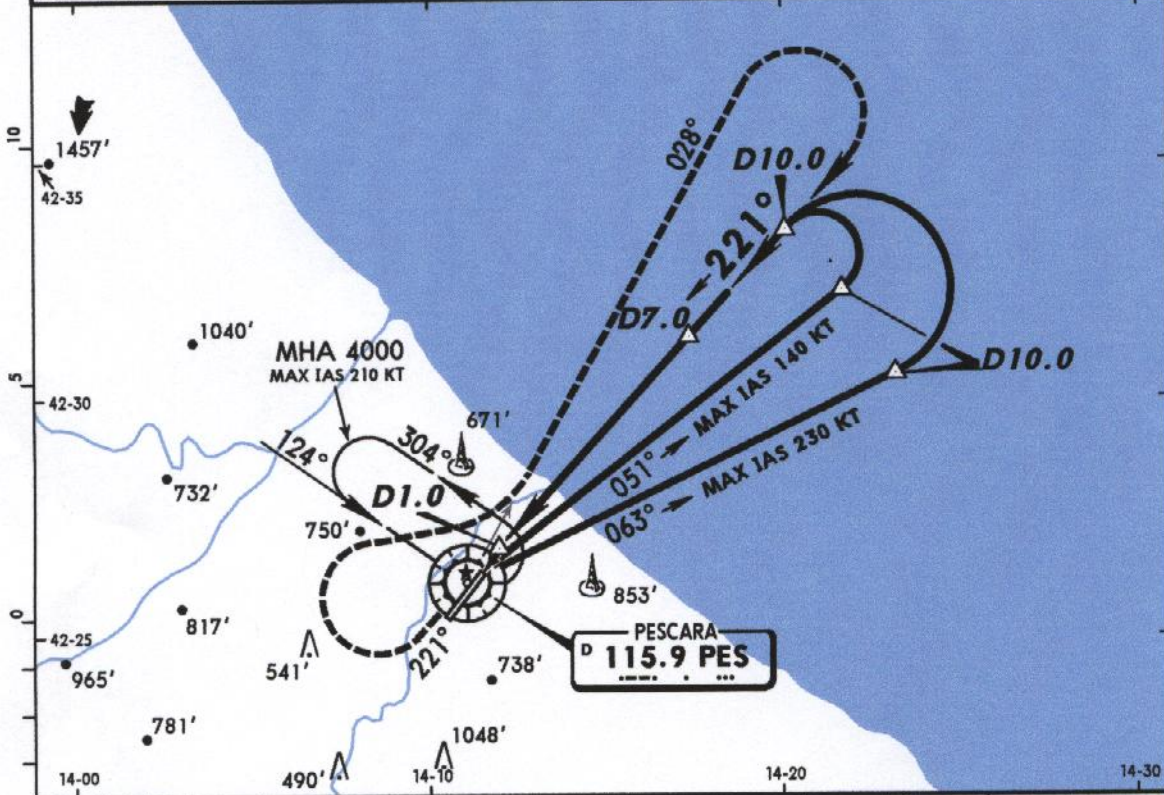
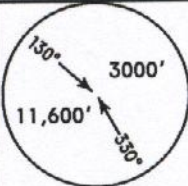
MDA(H)  
700' (673')

Apt Elev 48'  
RWY 27'

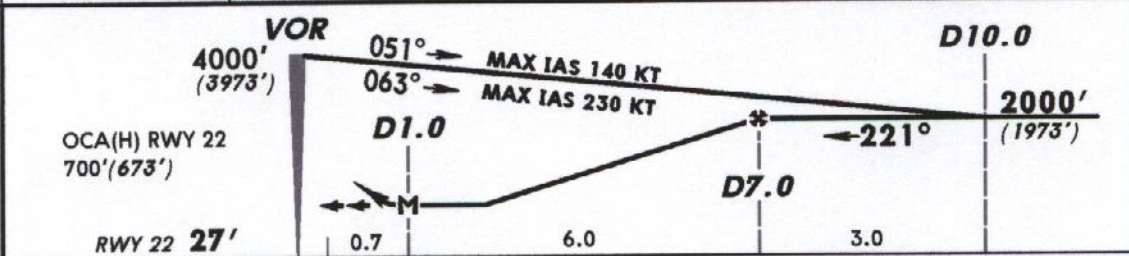
MISSED APCH: Climb on track 221° to 1000', then turn RIGHT (MAX IAS 230 KT) to intercept and follow R-028 climbing to 4000', then turn RIGHT to VOR.

Alt Set: hPa Rwy Elev: 1 hPa Trans level: By ATC Trans alt: 5000' (4973')

MSA PES VOR



PES DME	2.0	3.0	4.0	5.0	6.0
ALTITUDE (HAT)	550' (523')	840' (813')	1130' (1103')	1420' (1393')	1710' (1683')



Gnd speed-Kts	70	90	100	120	140	160
Descent Gradient 4.8%	340	437	486	583	681	778
MAP at D1.0						

MIALS AVASI AVASI

1000' on 221°

JAR-OPS STRAIGHT-IN LANDING RWY 22			CIRCLE-TO-LAND		
MDA(H) 700' (673')			Not authorized Southeast of rwy		
ALS out			Max Kts	MDA(H)	VIS
RVR 1500m			100	1100' (1052')	1500m
			135	1100' (1052')	1600m
RVR 1800m		RVR 2000m	180	1200' (1152')	2400m
RVR 2000m			205	1300' (1252')	3600m