

### 1.3 RACK OR CONSOLE MOUNTING

For a correct operation, sufficient rack or console stability must be insured. As specified in the plan of dimension (see page 39), a counter-cut of 470x514 mm is required.

In order to improve isolation from vibrational disturbances, it is recommended to lay the four rubber feet attached to the chassis bottom on a flat support surface integral with the rack or console.

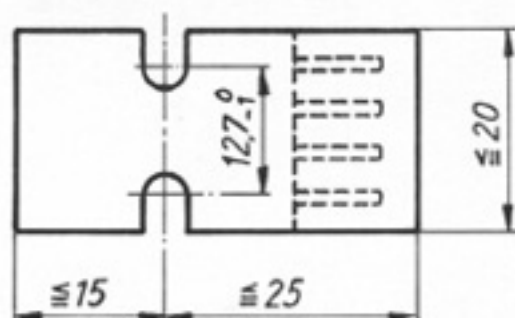
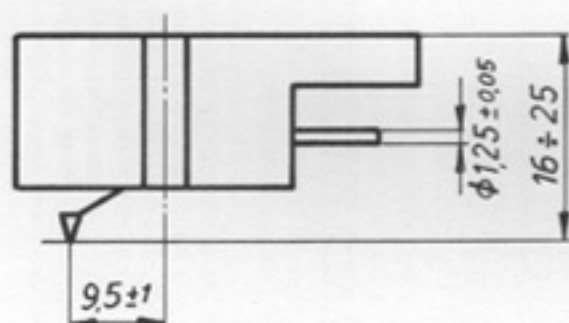
This surface, which for instance can be realized by means of a bracket, should lie 149 mm below the counter level of the rack or console.

### 1.4 MOUNTING OF PICKUP SYSTEM INTO EMPTY SHELL

Turntables of the TRS 9000 series are supplied with an empty EIA standard shell, into which any pickup cartridge with 1/2" fittings, height  $16 \div 25$  mm and weight 4,5 ÷ 10 grams can be mounted.

Upon request, special shells and counterweights can be supplied to match with cartridges featuring different values from those mentioned above.

#### Cartridge dimensions (mm)



#### Electric connections

Red : right channel, + (hot)  
Green : right channel, -  
White : left channel, + (hot)  
Blue : left channel, -

FIG. 3