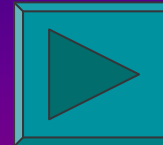


Genetica umana

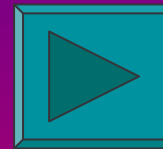
daltonismo



dissociati



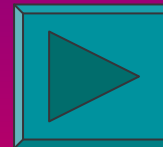
emofilia



associati



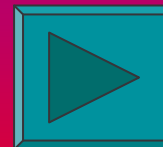
Gruppi sanguigni



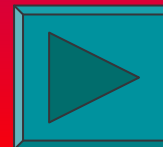
Rh+/Rh-



Colore degli occhi

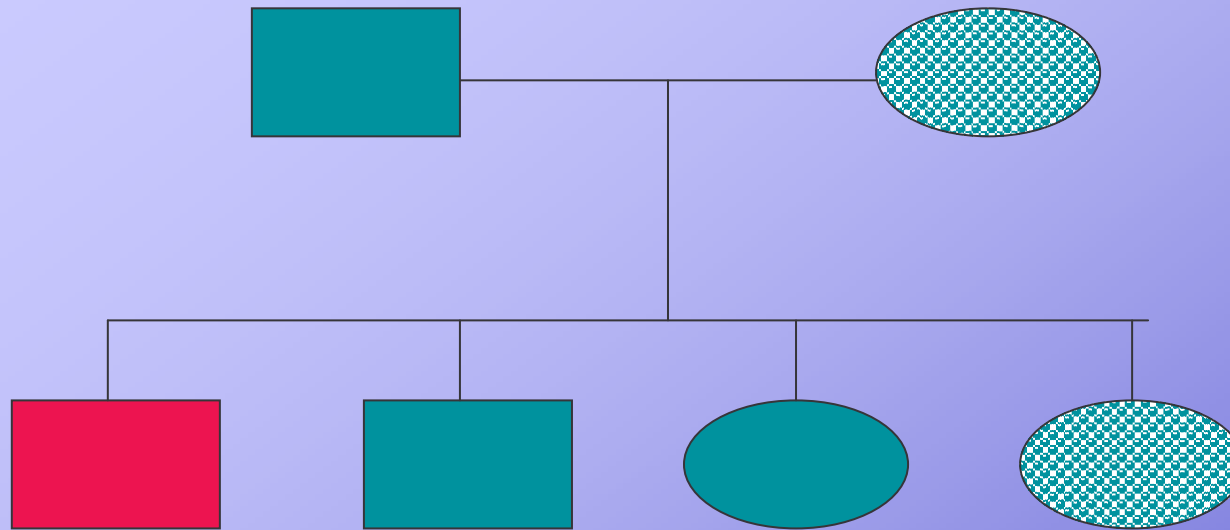


Albero genealogico



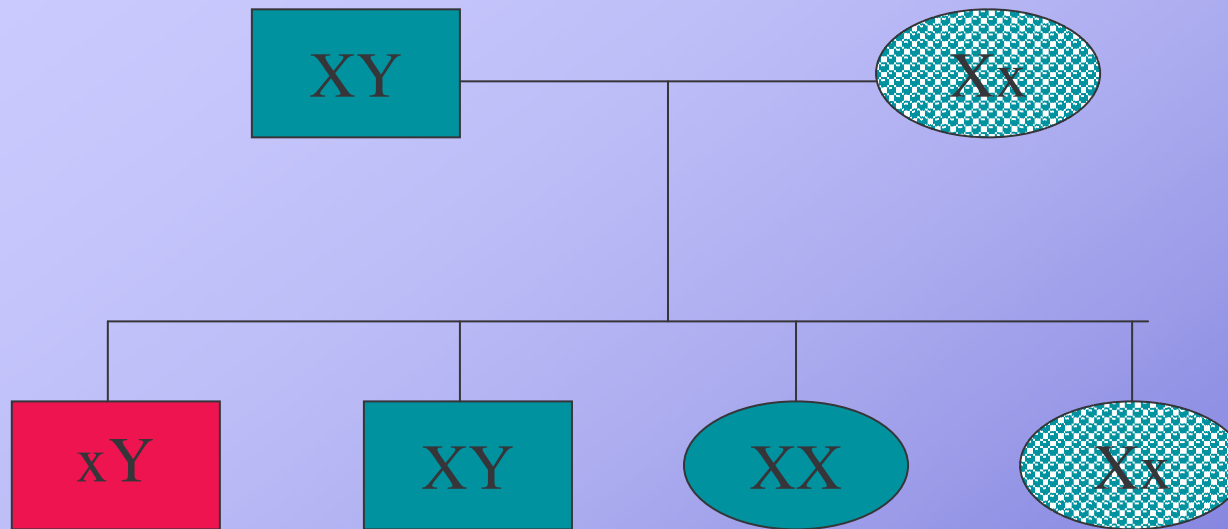
informazioni





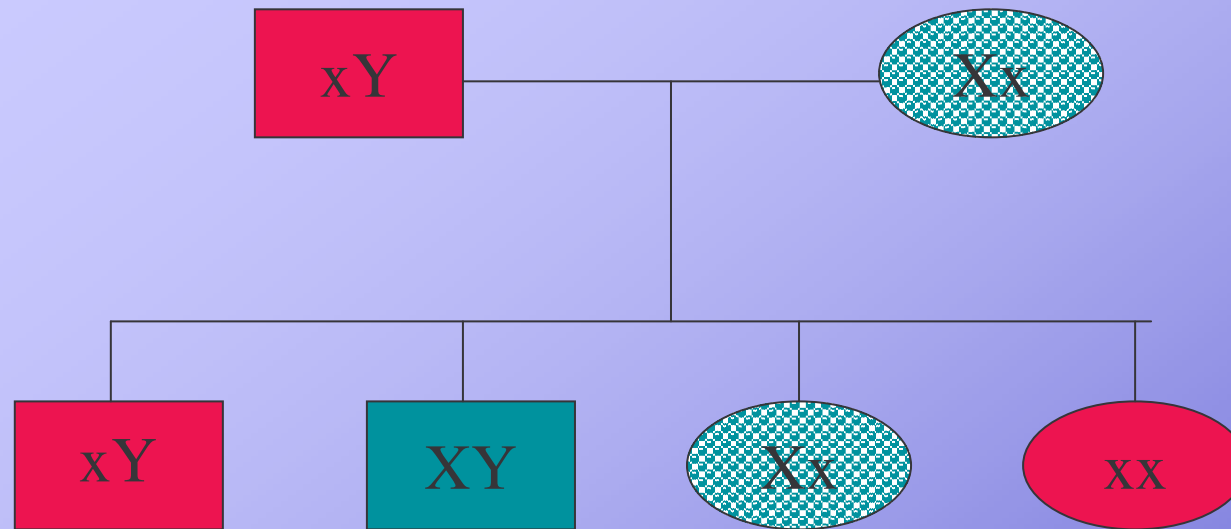
Padre e madre fenotipicamente normali; madre portatrice del daltonismo: 25% maschi daltonici; 25% maschi sani 25% femmine portatrici; 25% femmine sane





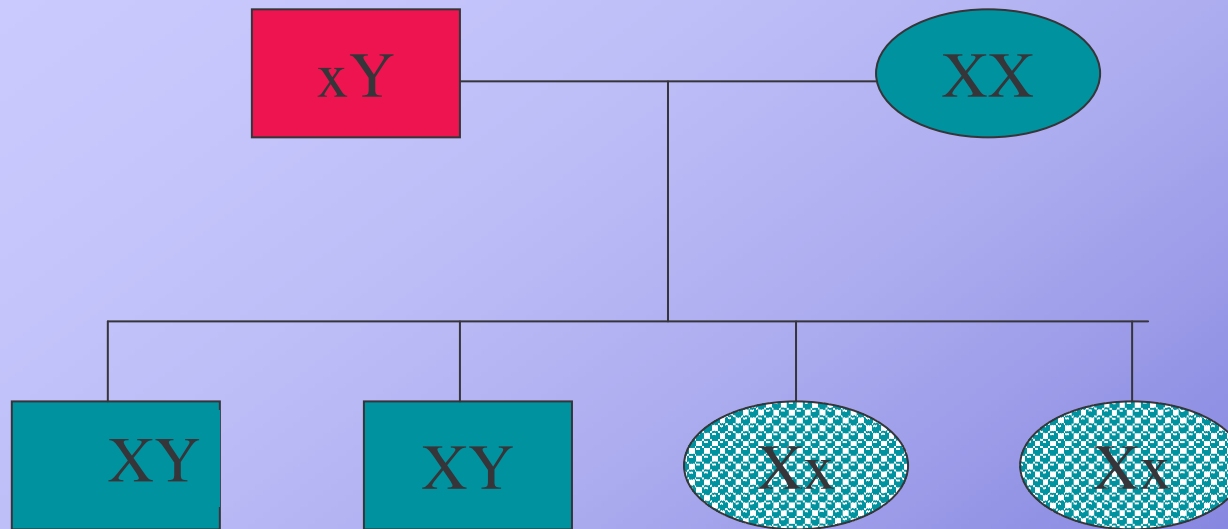
Padre e madre fenotipicamente normali; madre portatrice del daltonismo: 25% maschi daltonici; 25% maschi sani 25% femmine portatrici; 25% femmine sane



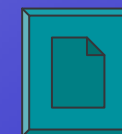


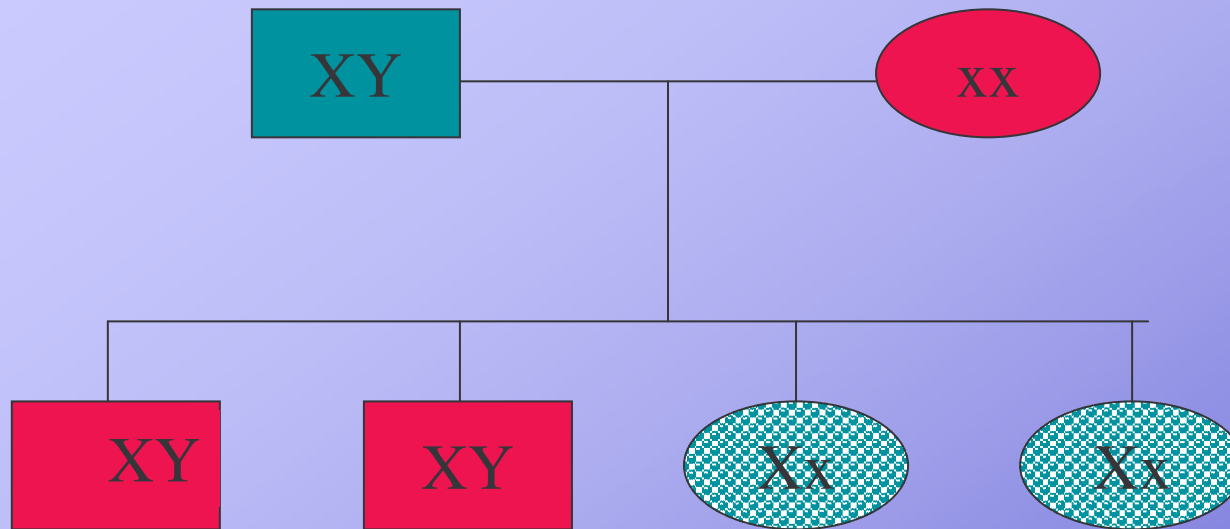
**Padre daltonico e madre portatrice
possono avere figli maschi e femmine daltonici
figli maschi sani e femmine portatrici**



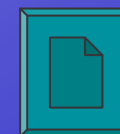


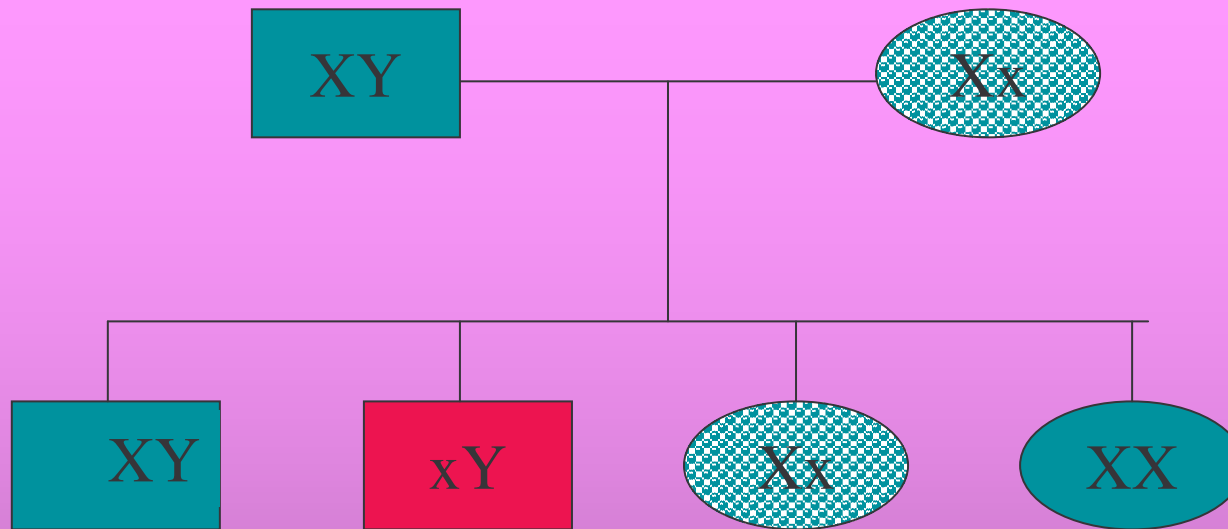
**Padre daltonico e madre sana
possono avere figli maschi sani e figlie
femmine portatrici**





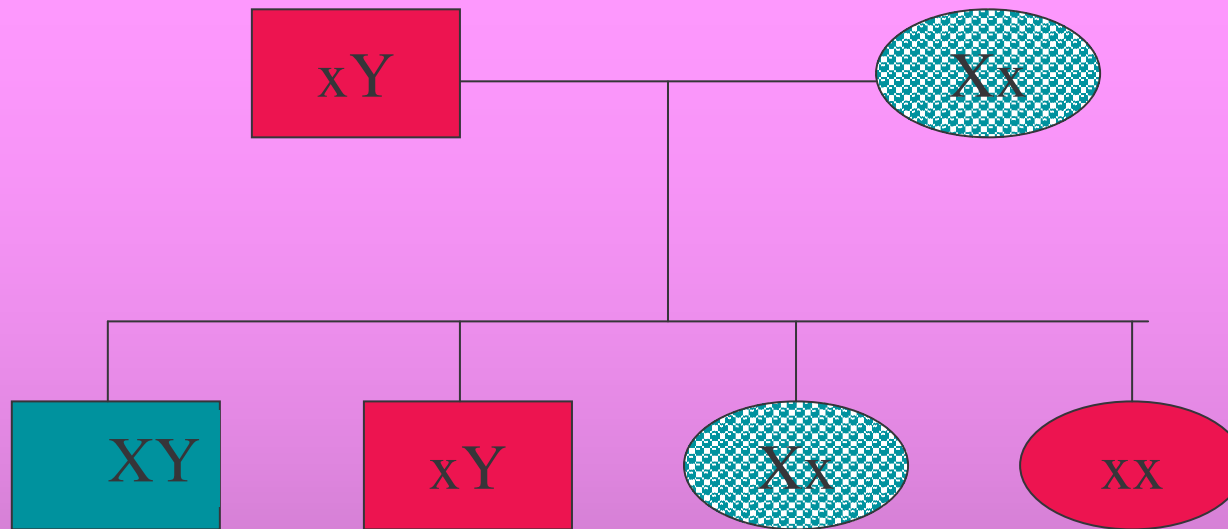
**Padre sano e madre daltonica
possono avere figli maschi tutti daltonici
femmine tutte portatrici**





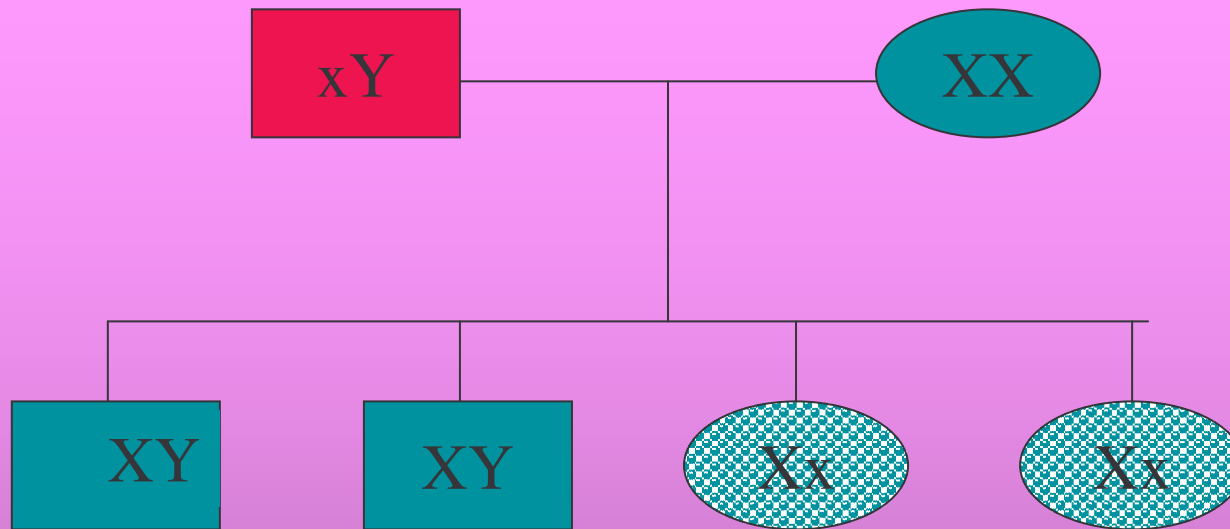
**Padre sano e madre portatrice emofilia
possono avere figli maschi sani o emofilici
femmine sane o portatrici**



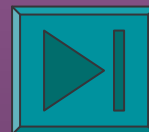


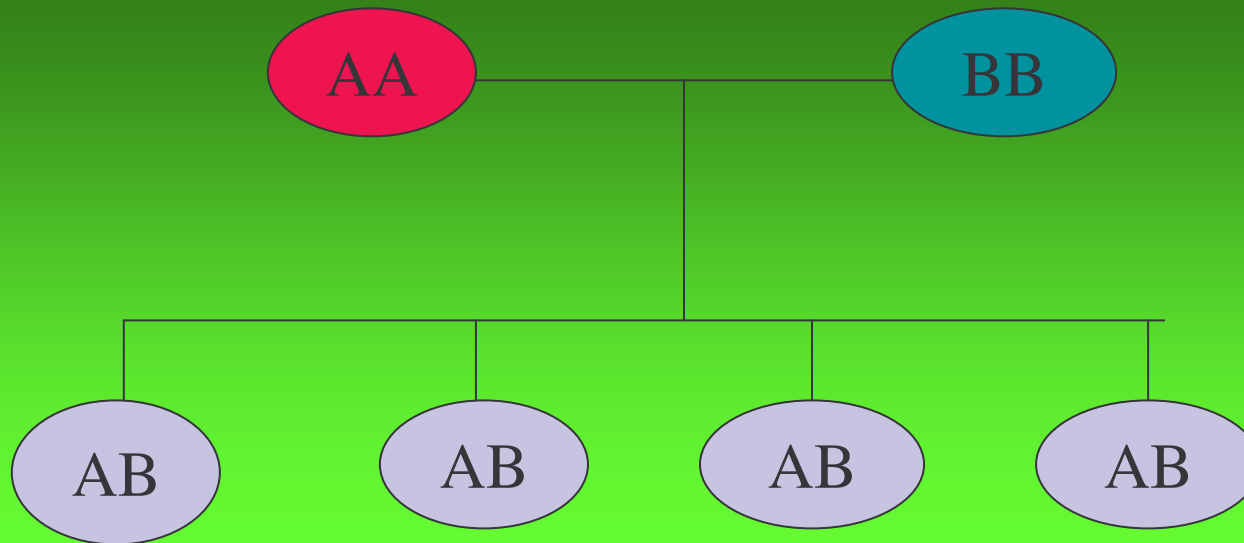
**Padre emofilico e madre portatrice emofilia
possono avere figli maschi sani o emofilici
femmine emofiliche o portatrici
SITUAZIONE MOLTO IMPROBABILE**



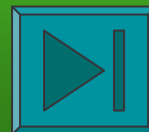


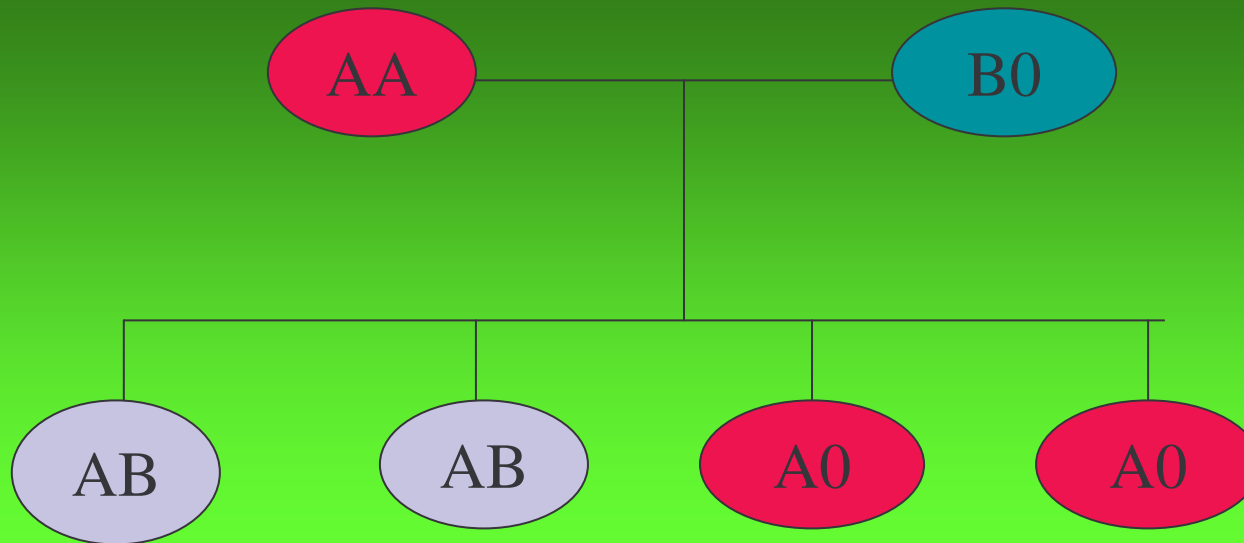
Padre emofilico e madre sana
possono avere figli maschi sani
femmine portatrici
SITUAZIONE IMPROBABILE





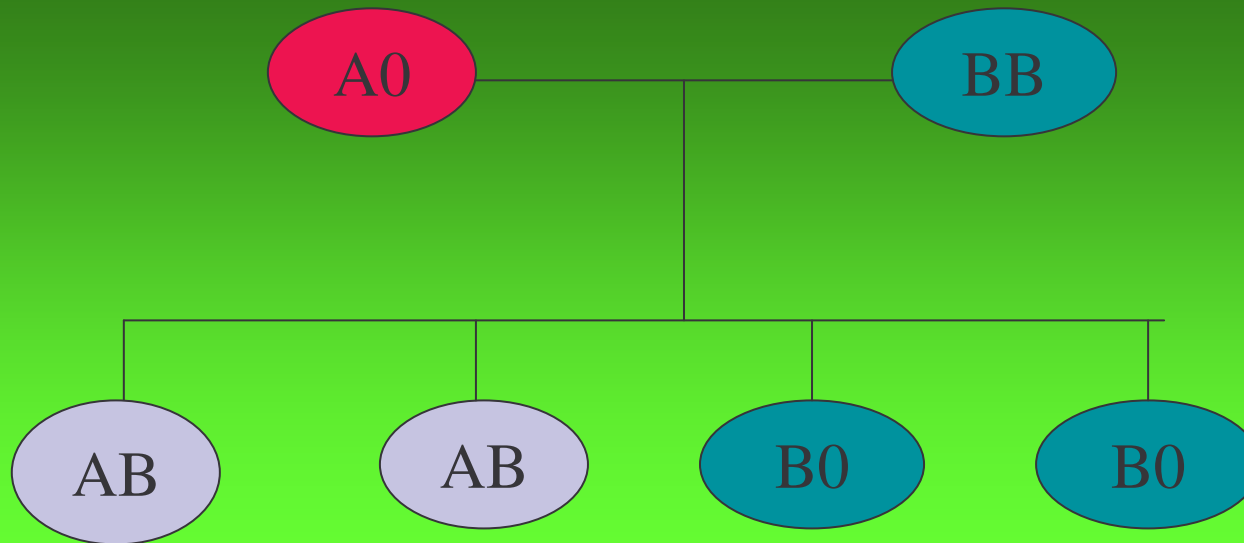
Omozigote AA ,omozigote BB
tutti i figli con gruppo AB
allele A codominante con allele B



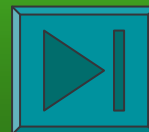


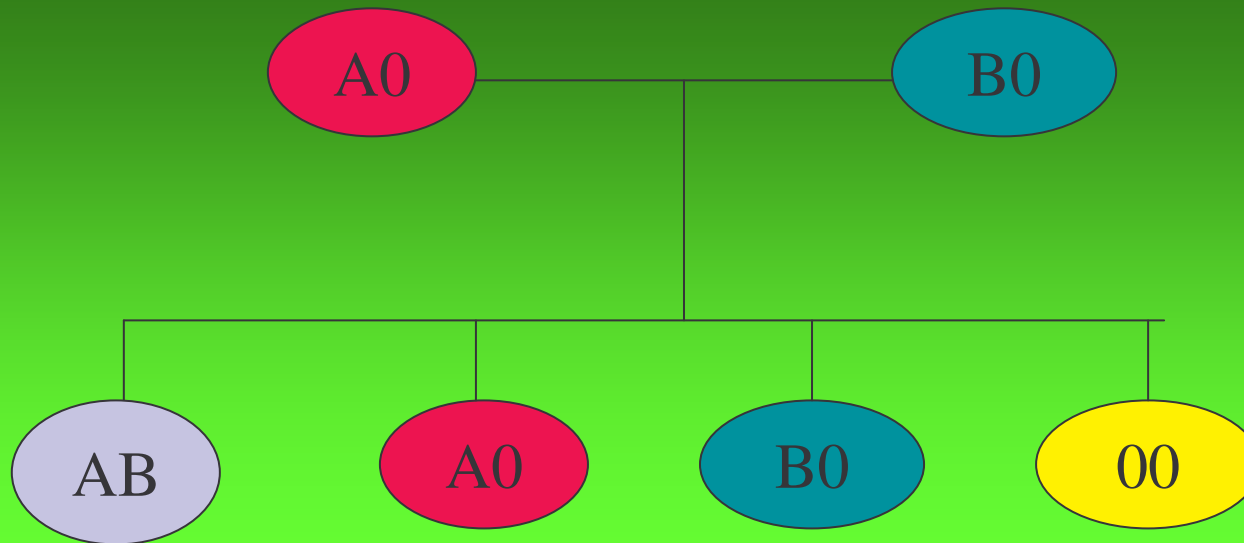
Omozigote AA ,eterozigote B0
figli con gruppo AB..A0
allele A codominante con allele B
allele 0 recessivo





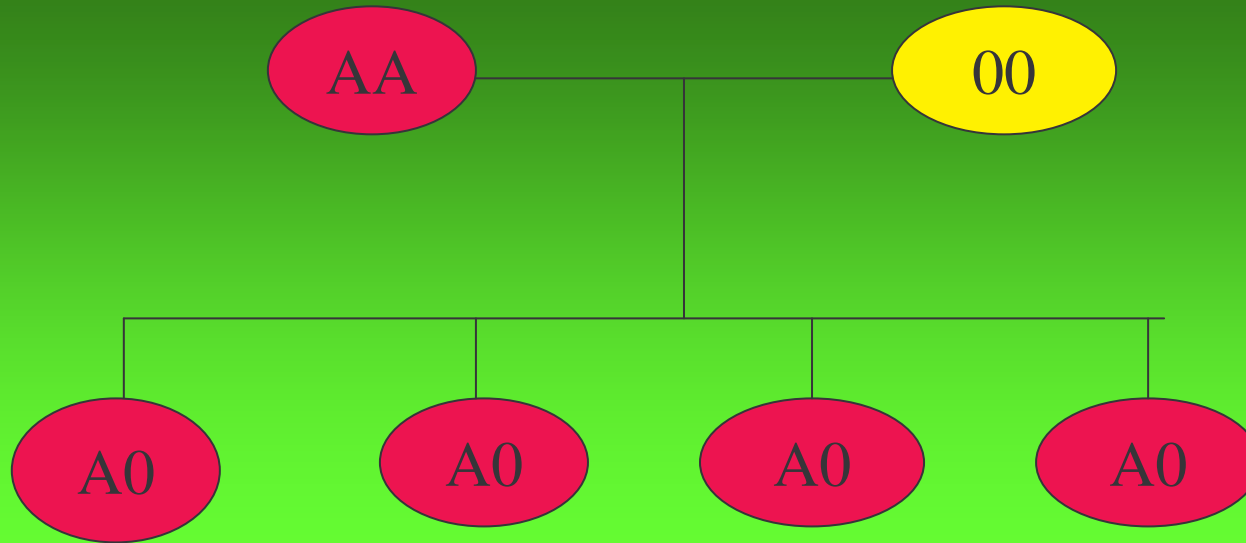
Omozigote BB ,eterozigote A0
figli con gruppo AB..B0
allele A codominante con allele B
allele 0 recessivo





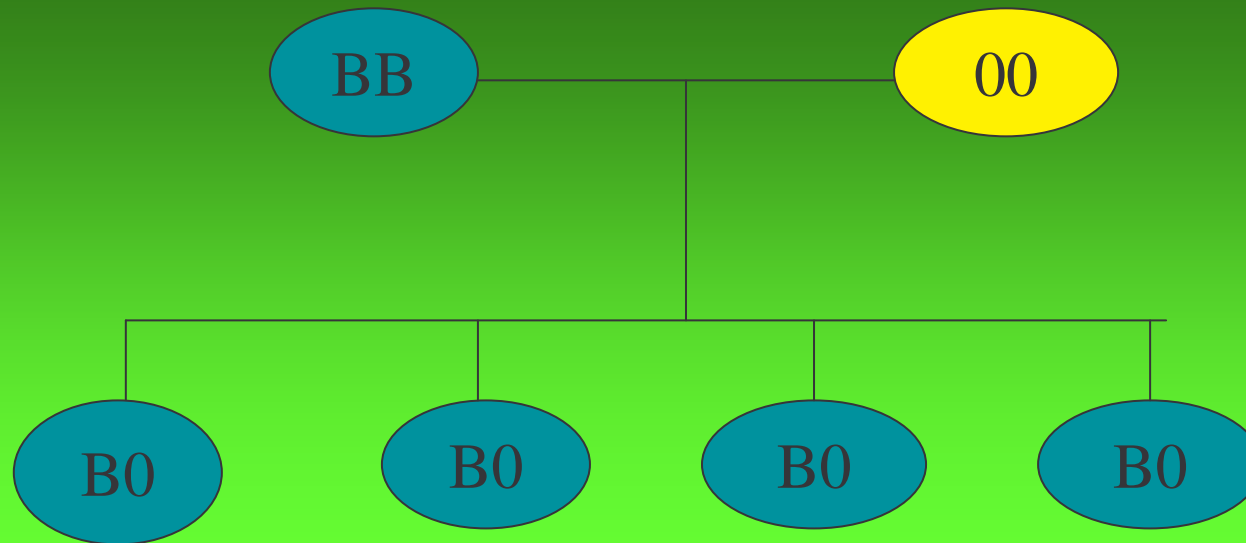
Eterozigote B0 ,eterozigote A0
figli con gruppo AB..A0.B0.00
allele A codominante con allele B
allele 0 recessivo





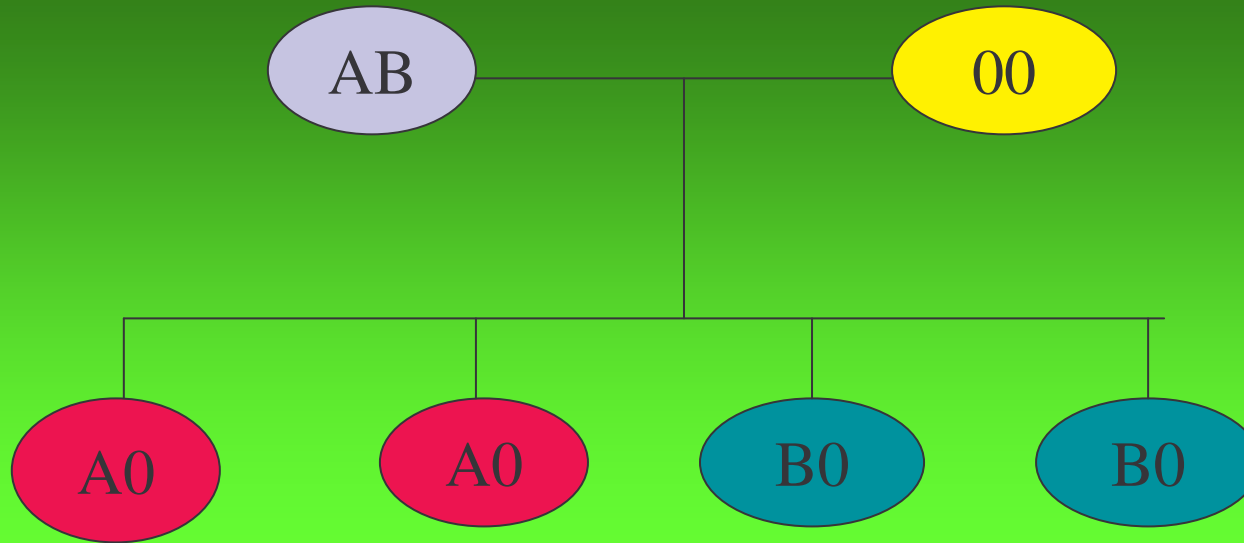
Omozigote AA..omozigote OO
figli con gruppo A0
allele A
allele 0 recessivo





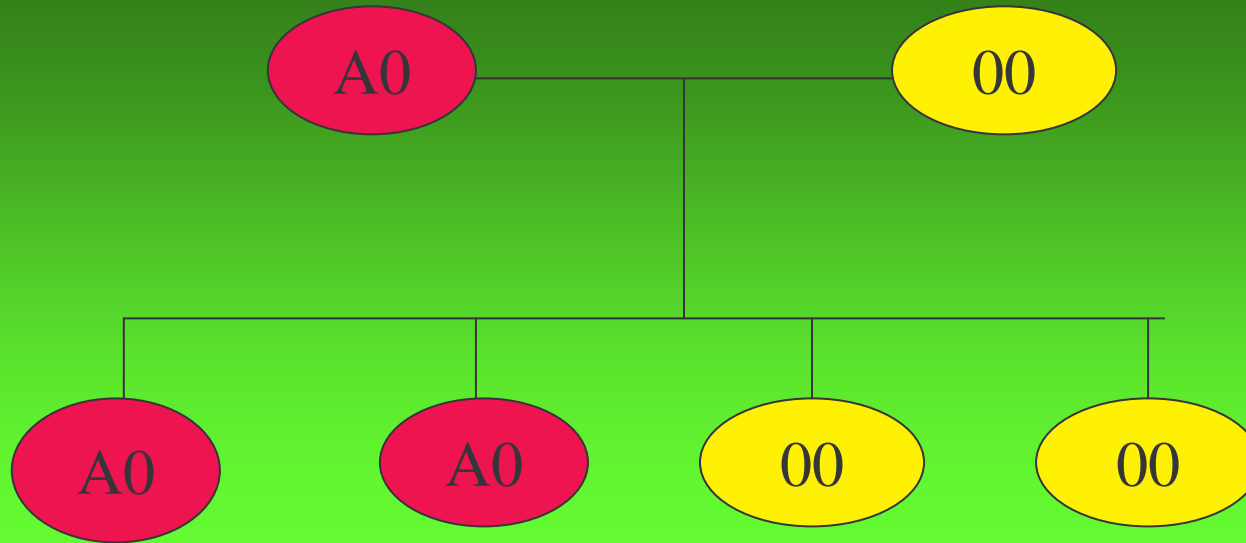
Omozigote BB..omozigote OO
figli con gruppo B0
allele B dominante
allele 0 recessivo





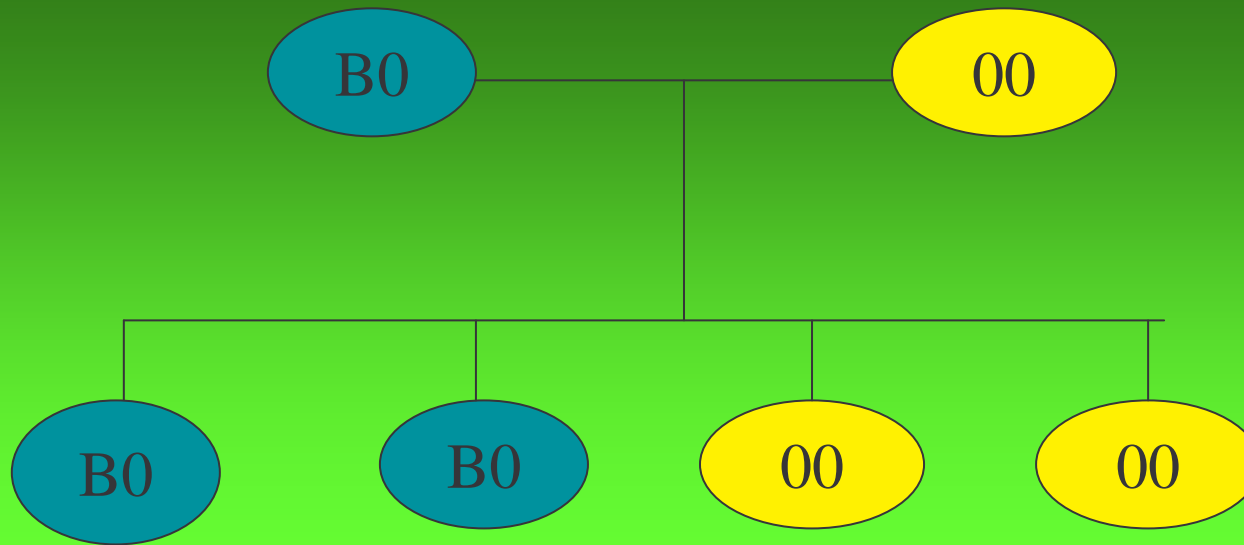
Eterozigote AB..omozigote OO
figli con gruppo B0..A0
allele A ,B codominante
allele 0 recessivo





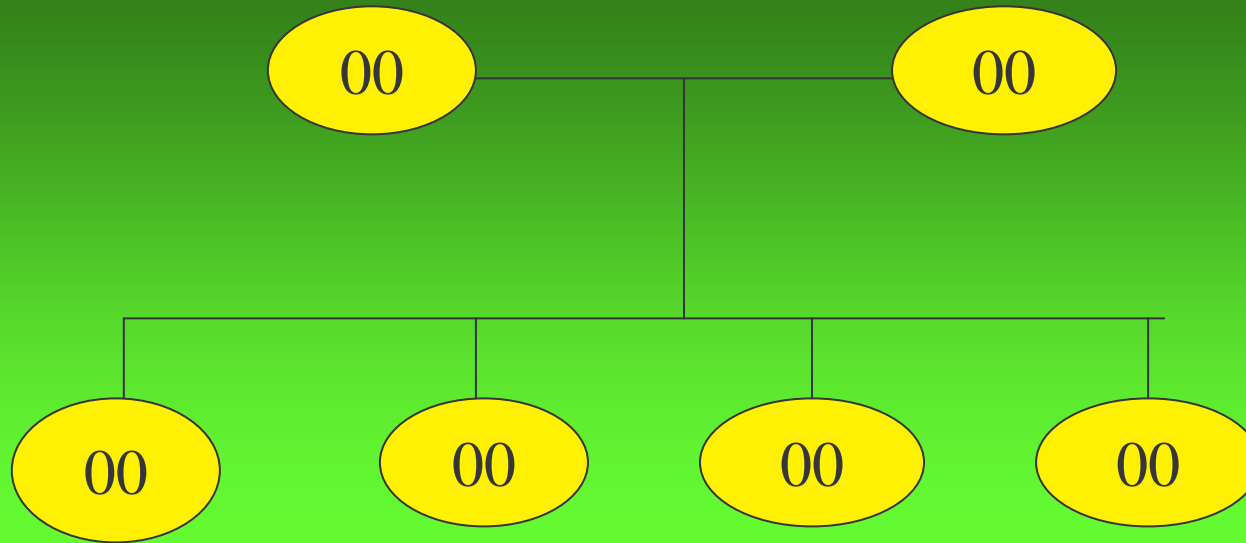
Eterozigote A0..omozigote 00
figli con gruppo A0..00
allele A dominante
allele 0 recessivo





Eterozigote A0..omozigote 00
figli con gruppo B0..00
allele B dominante
allele 0 recessivo

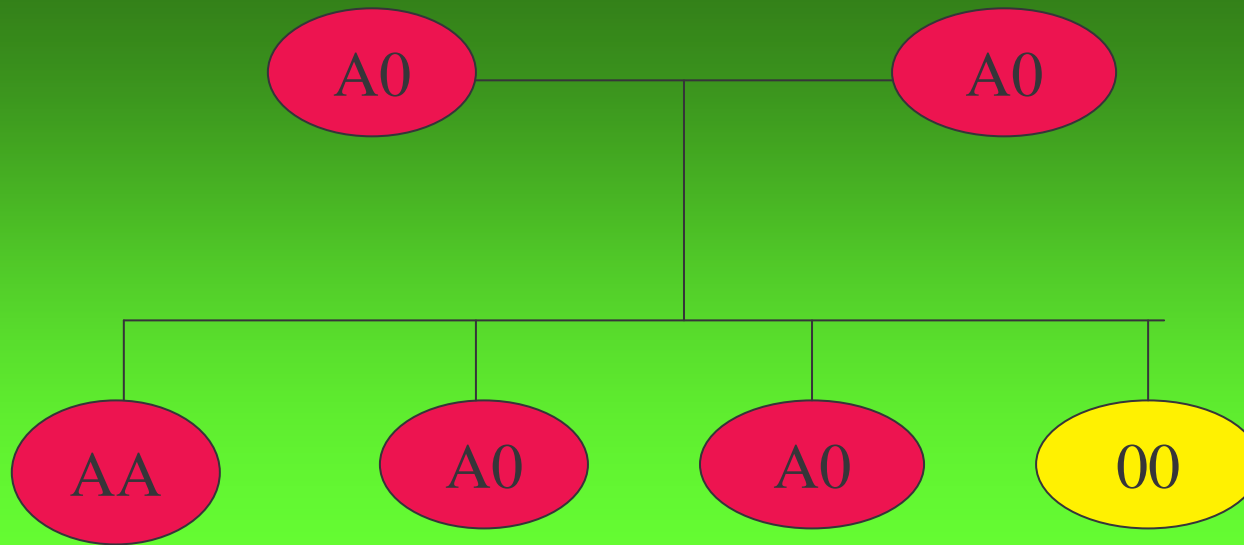




Omozigote 00..omozigote 00
figli con gruppo .00

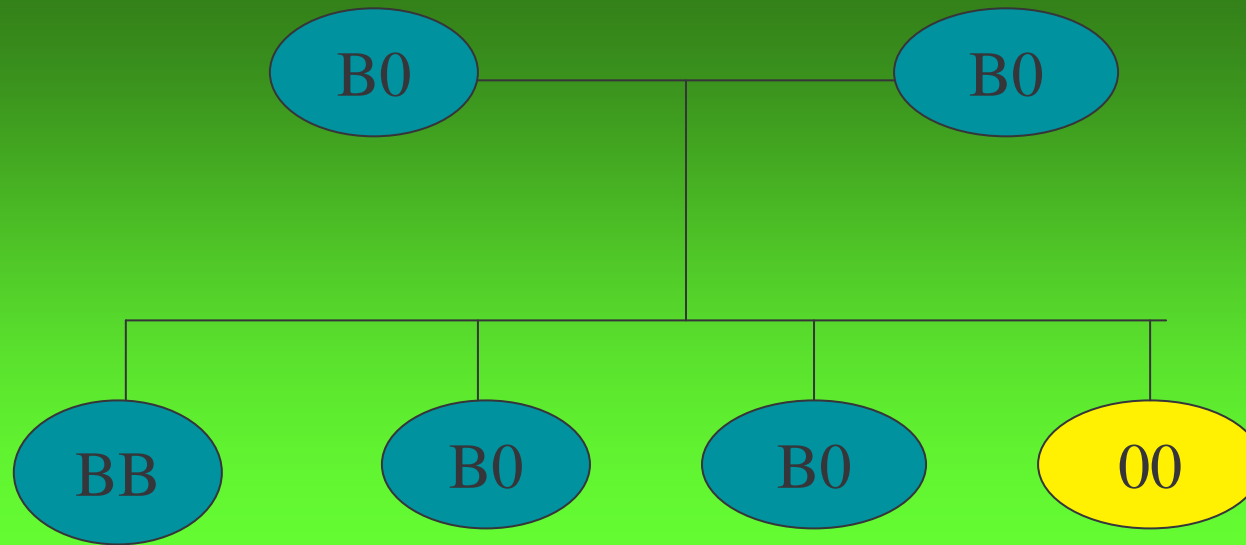
allele 0 recessivo





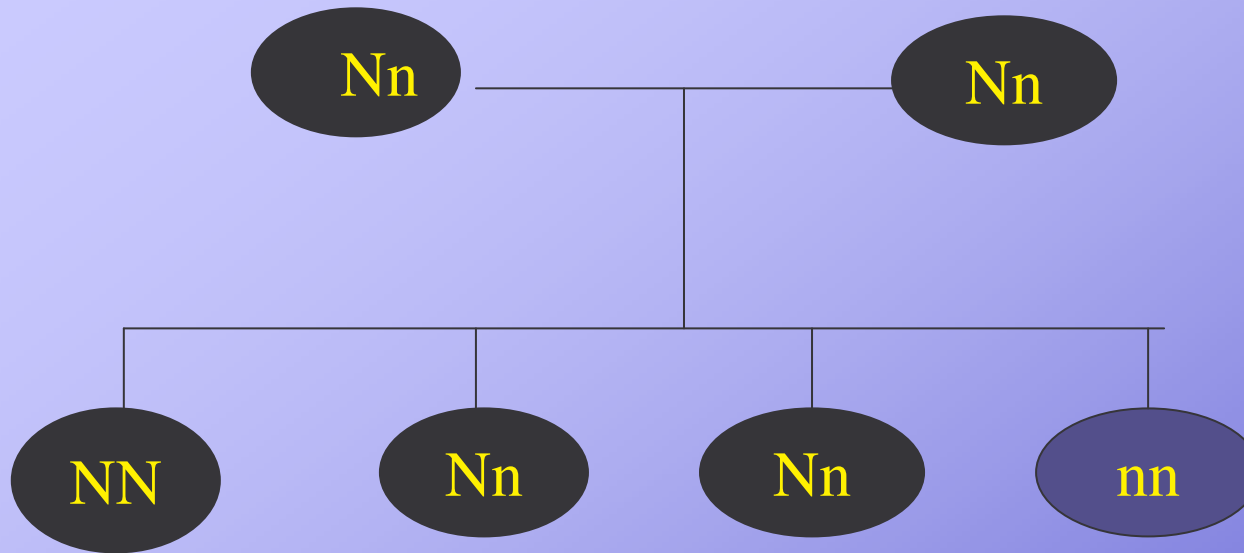
Eterozigoti A0
figli con gruppo .AA..A0..00
A allele dominante
allele 0 recessivo



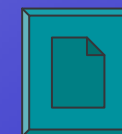


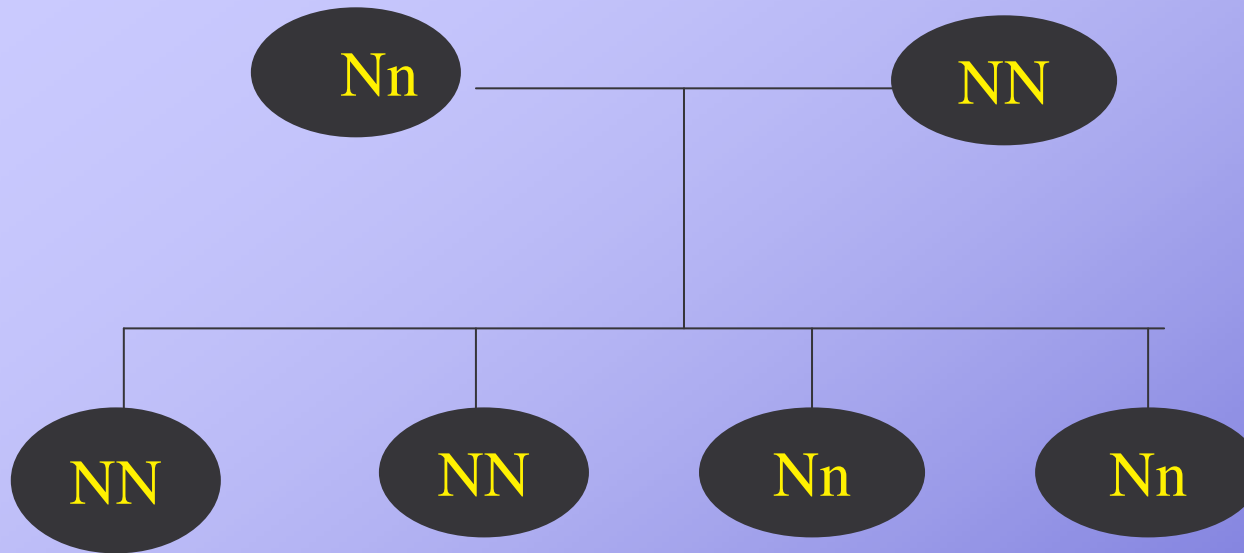
Eterozigoti B0
figli con gruppo .BB..B0..00
B allele dominante
allele 0 recessivo



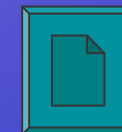
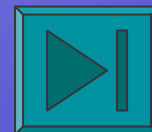


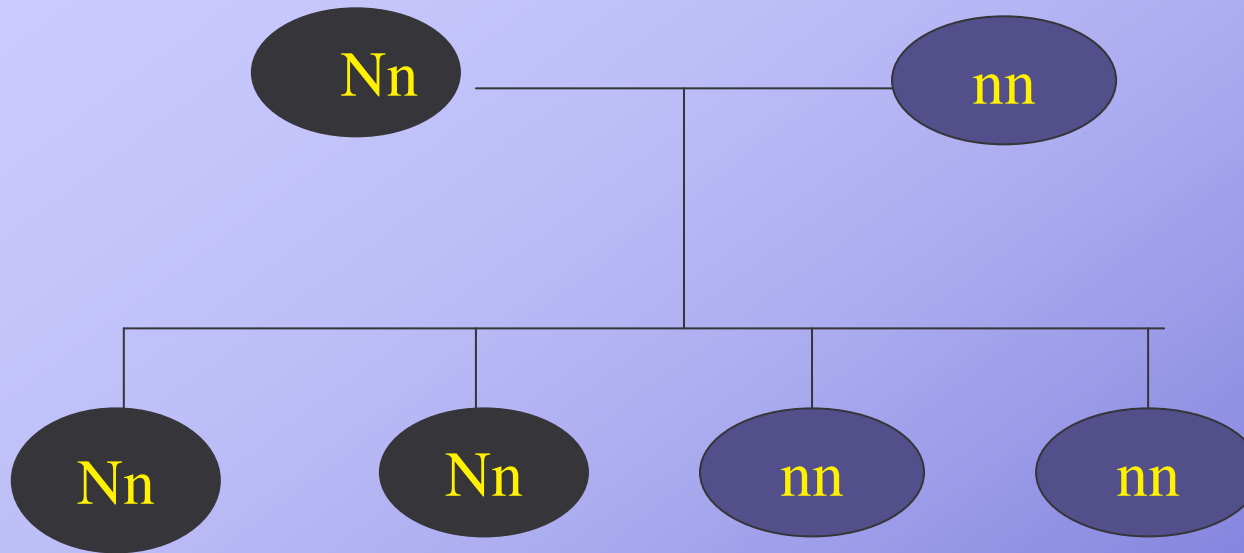
Eterozigoti Nn occhi neri
figli con occhi neri o occhi azzurri
Nero N dominante su azzurro n



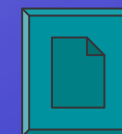


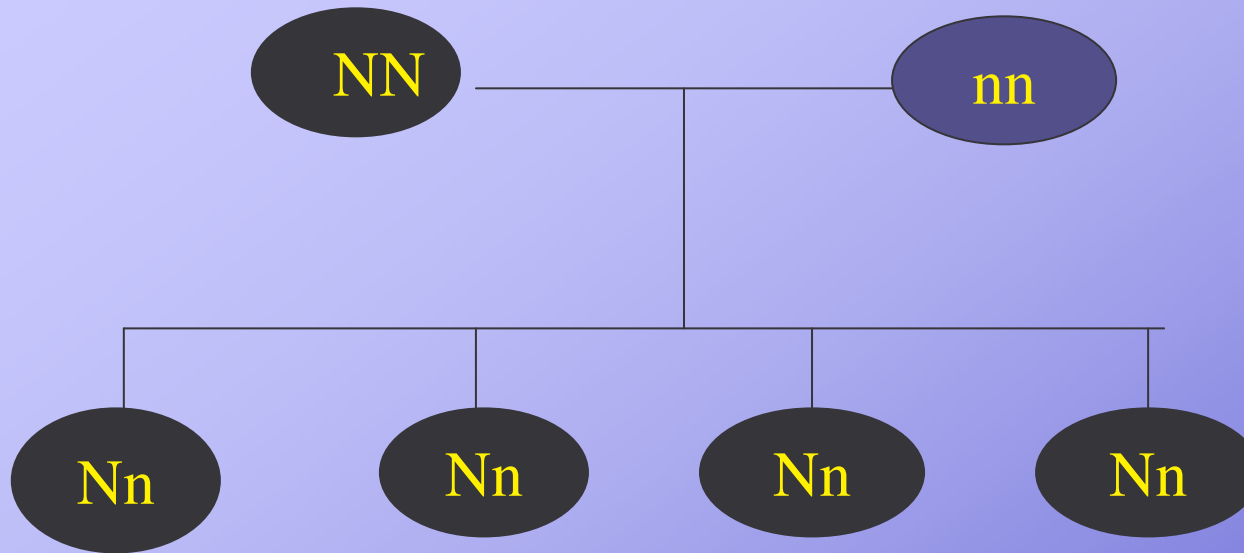
Eterozigotie Nn occhi neri
omozigote occhi neri NN
figli con occhi neri
Nero N dominante su azzurro n





Eterozigotie Nn occhi neri
omozigote occhi azzurri nn
figli con occhi neri e occhi azzurri
Nero N dominante su azzurro n



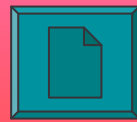
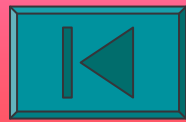
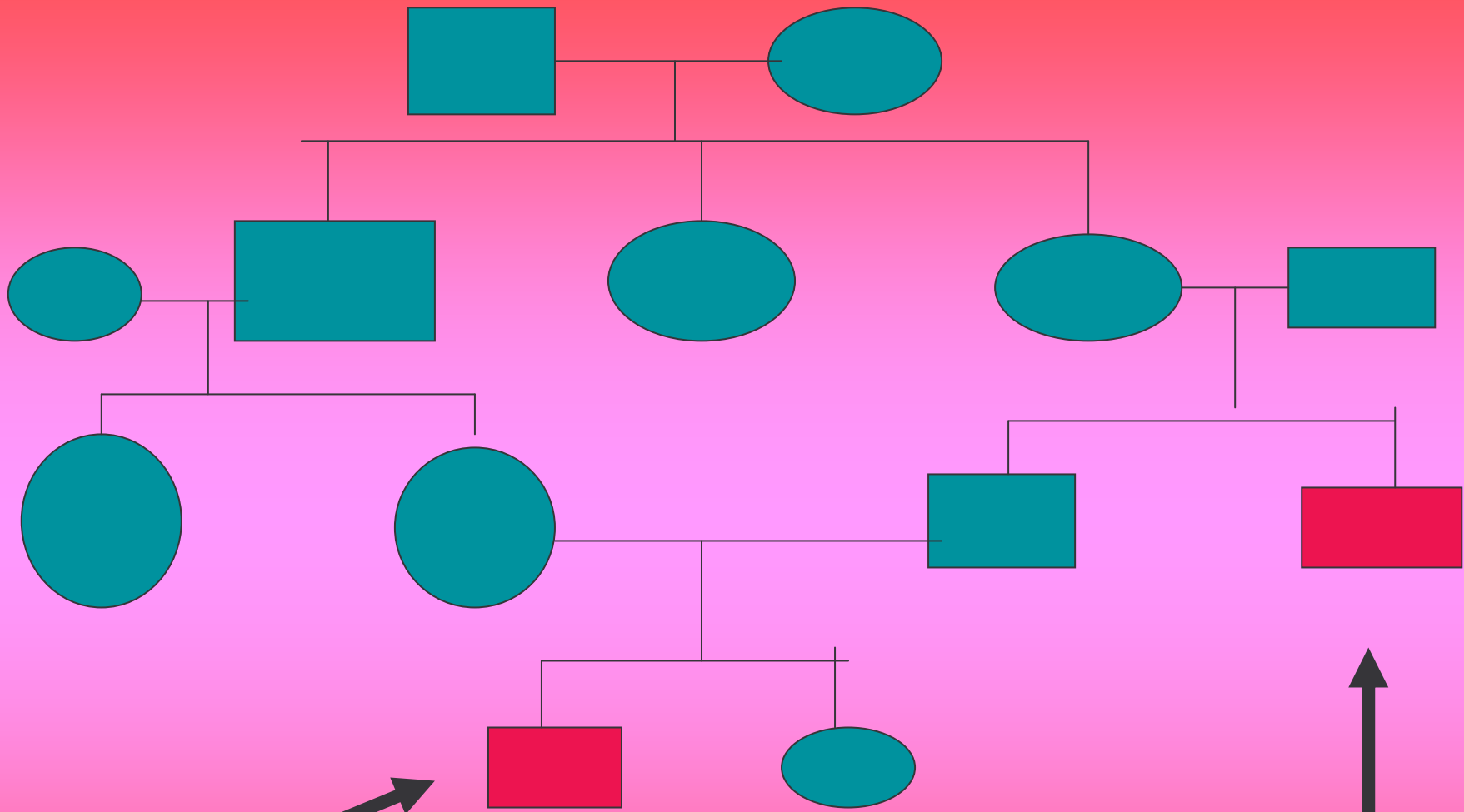


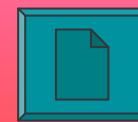
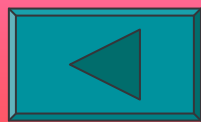
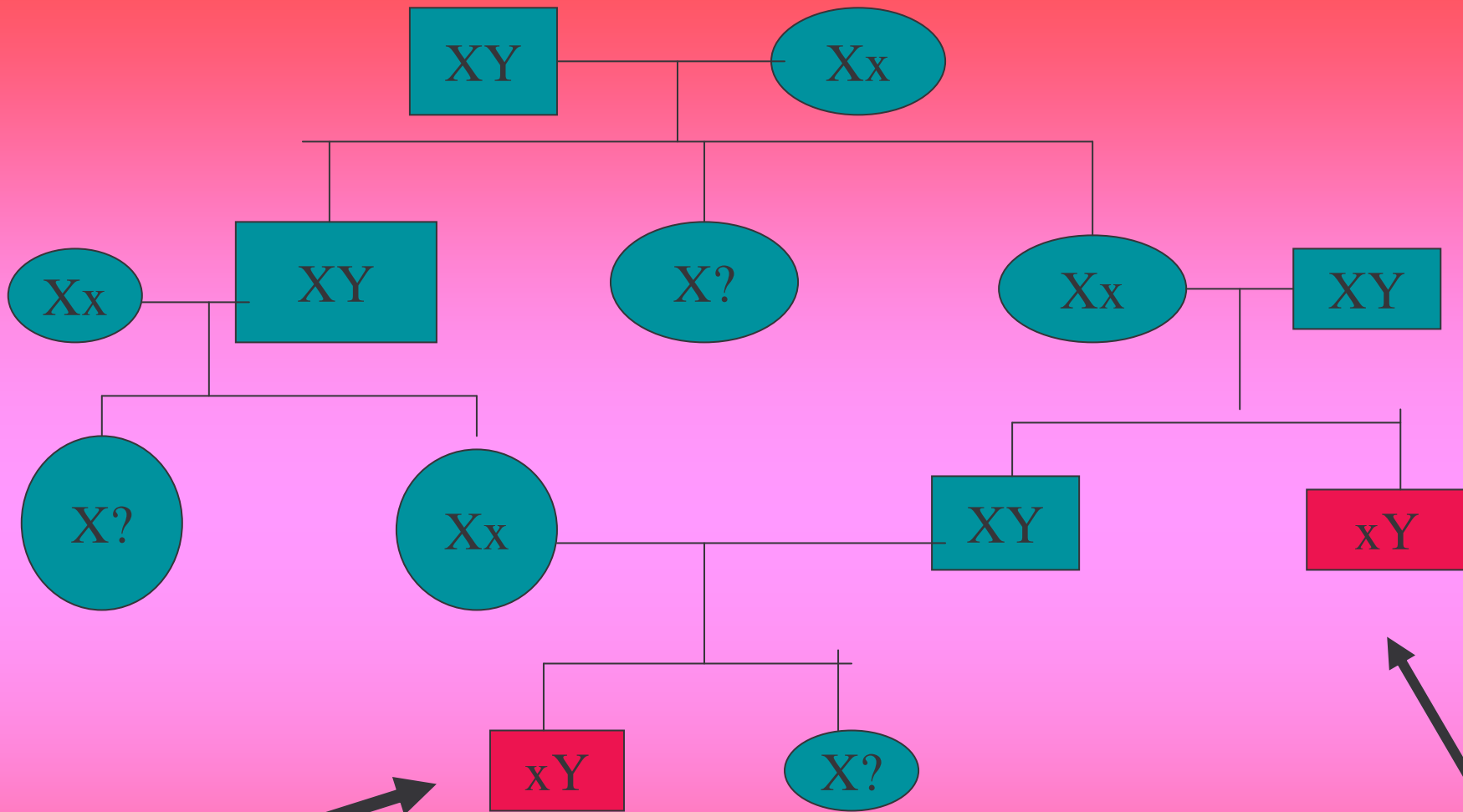
Omozigote occhi neri NN
omozigote occhi azzurri nn
figli con occhi neri
Nero N dominante su azzurro n

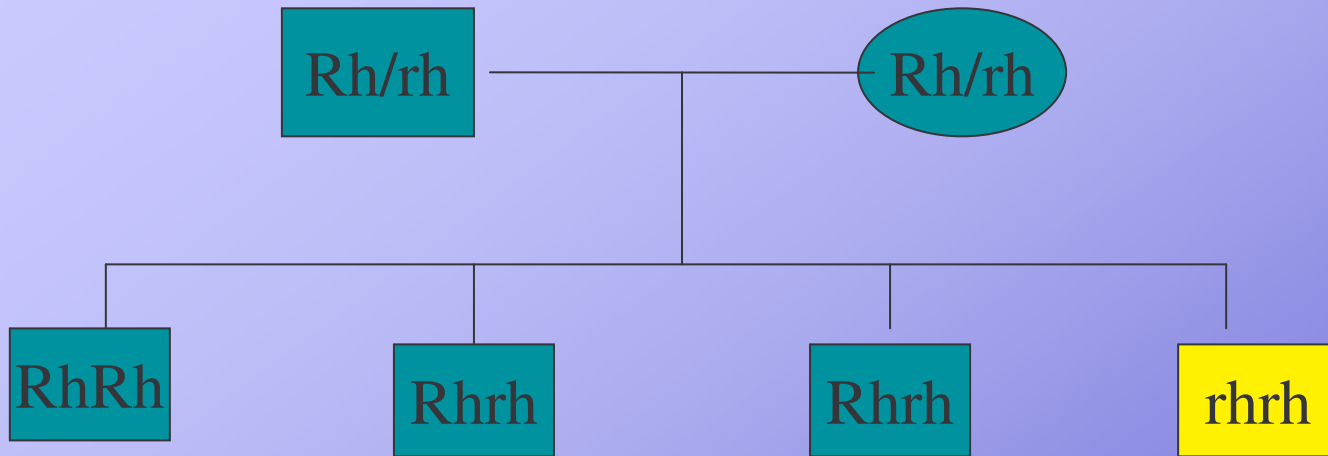


Albero genealogico e ricerca dei genotipi in funzione dei fenotipi noti
esempio con emofilia
carattere legato al cromosoma sessuale X

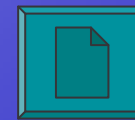
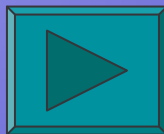


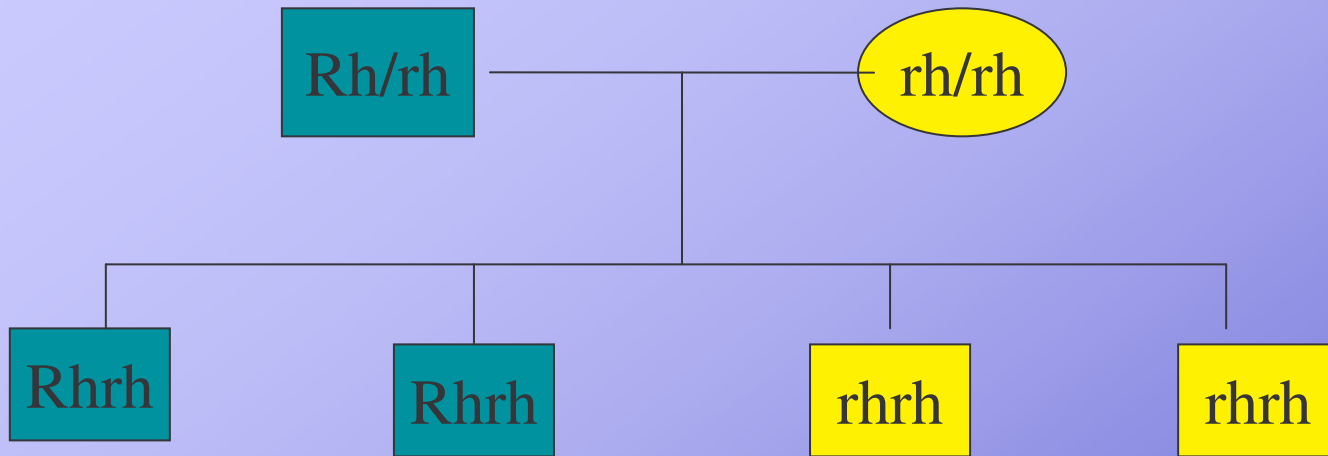




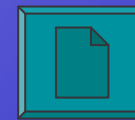
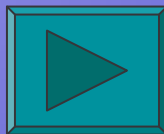


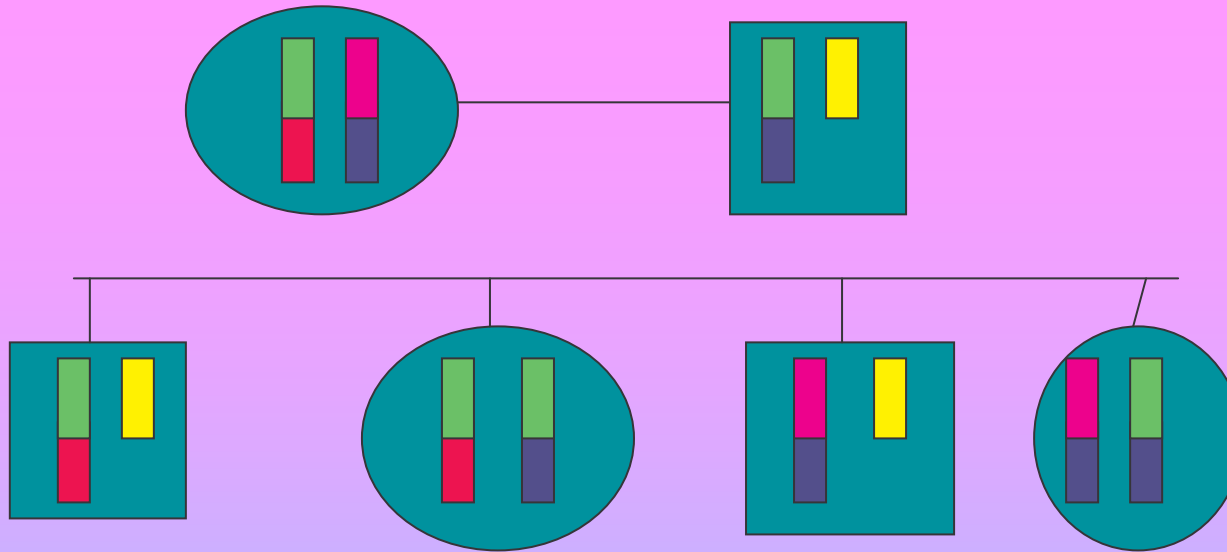
**Genitori eterozigotici Rhrh
possono avere figli 25% RhRh...25% rhrh
50% Rhrh
75% fenotipicamente Rh**







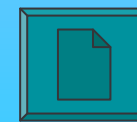


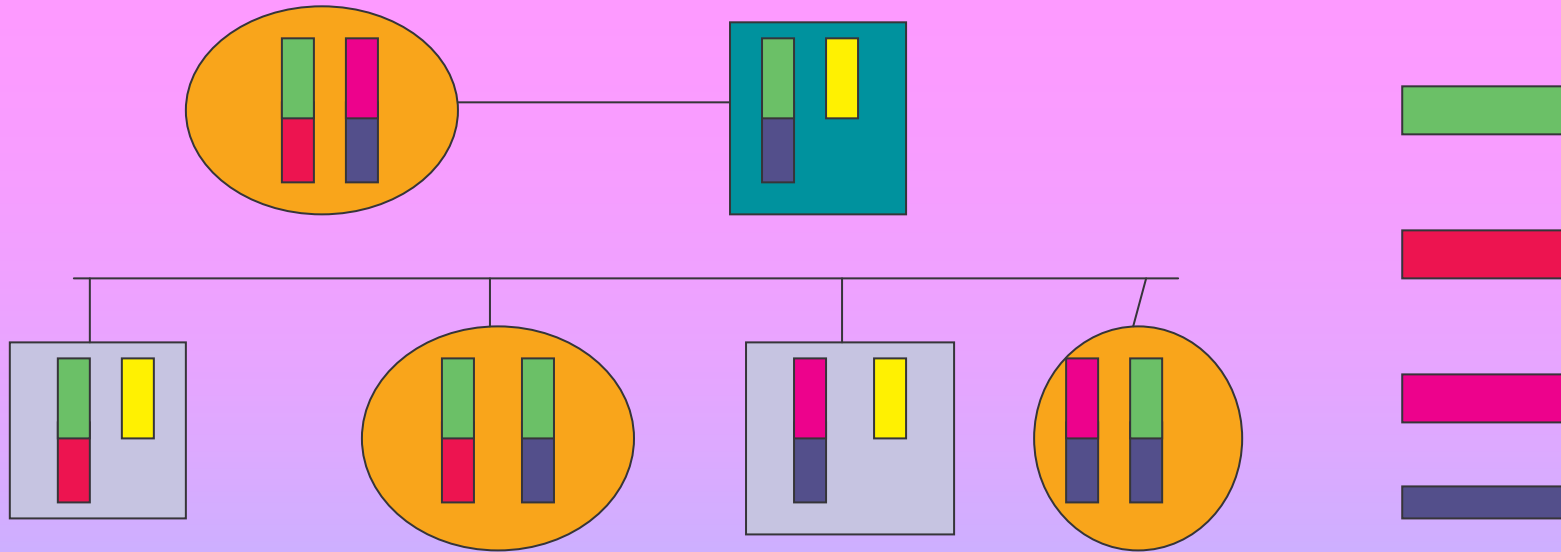
**Omozigote rhrh ed eterozigote Rhrh
possono avere figli 50% Rhrh...50% rhrh**



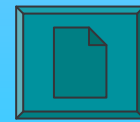
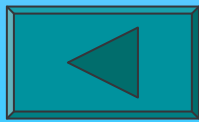


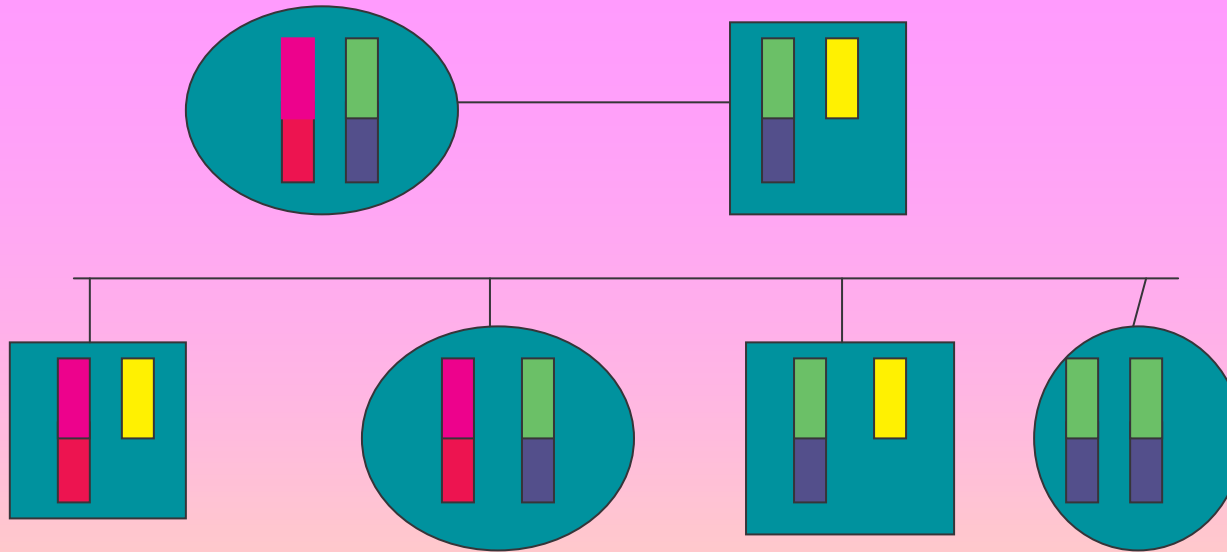
 Allele coagulazione normale
 allele visione daltonica
 allele emofilia
 allele visione normale




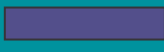


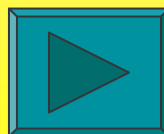


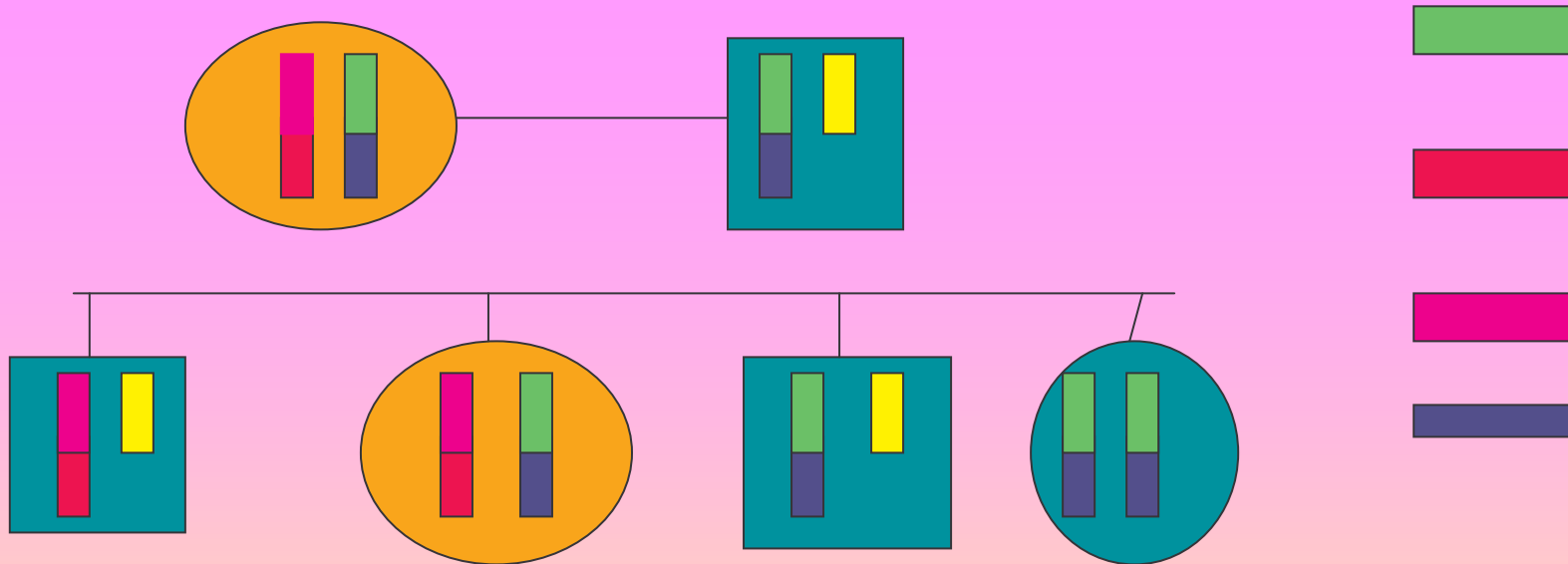
Maschio daltonico
femmina portatrice daltonismo
maschio emofilico
femmina portatrice emofilia



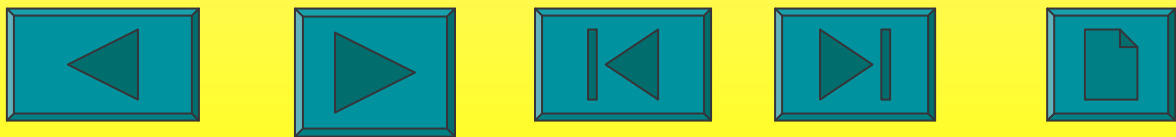


 Allele coagulazione normale
 allele visione daltonica
 allele emofilia
 allele visione normale





Maschio **daltonico** ed **emofilico**
 femmina portatrice **daltonismo** ed **emofilia**
 maschio normale
 femmina normale



fine presentazione

arrivederci



