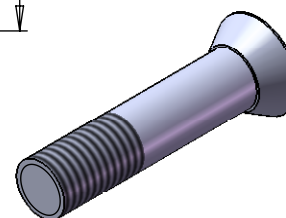
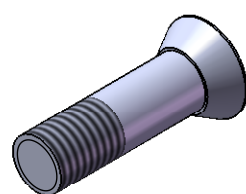
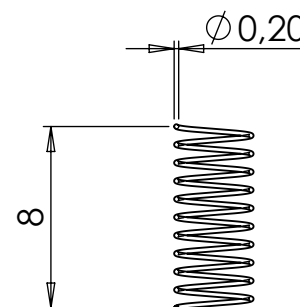
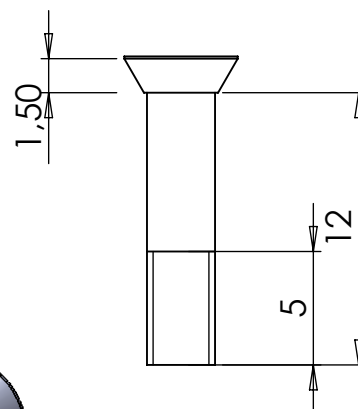
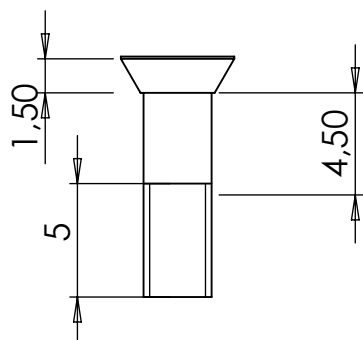


molla in bronzo fosforoso  
o acciaio inox



perni da fissare con brasatura  
a stagno sugli spessori, prima  
di brasarci i cilindri

AUTORE Paolo Frabetti DATA:

QUADRICILINDRICO A "V"

DISEGNO N. perni e molle

A4

Misure in millimetri

SCALA = 3: 1

FOGLIO 1 DI 1