

Siemens Enterprise Communications

Release Note ¹

Release Note Version:

V1.10.3

Document Owner: Höfig, Jürgen

Product Name:

HiPath 2000
Comfort Open
T-Octopus F270 IT

Product-Version:

V1.0

SW Release is identified by **SW Version:** V1.0 R10.2.0

Major Release (Upgrade to a new Product-Version, relevant for manufacturing) ☐

Minor Release (Feature enhancements, relevant for manufacturing) ☐

(Upgrade or Update, depending upon new licensed features required. Upgrade only if license extension required)

Fix Release (Update, Error Corrections only) ☒

Fix Release (Update, Error Corrections only, relevant for manufacturing) ☐

Hotfix Release (Update, Error Corrections only, restricted to Service Level 2) ☐

Production-Version:

System:	Siemens : HiPath 2020, HiPath 2030 DTAG : Comfort Open DTAG : T-Octopus F270 IT	
Date/type / File type	Product Item Number / Dateiname / File name	Größe /Size
Firmware	P30152-P1261-P2-5 (FMW for WBM Update)	5.716.217 Bytes
	HE620Y.50.FMW.007-240.img	
Root file system	P30152-P1337-P3-6	10.218.195 Bytes
	OS-HE620Y-RFS-50.044.img.gz	
Application Software	P30152-P1194-P4-25	34.054.690 Bytes
	APPL-HE620Y-FP-10.743-LDH-15.014.img.gz	
Web Image	P30152-P1194-P7-8	49.625.714 Bytes
	HP2K_V1.0_WEB_IMAGE.10.743.tar.gz	
Bundle	P30152-P1194-P8-3	49.626.436 Bytes
	HP2K-V1-Bundle-620.10.743.zip	

Export Control Classification Data

Embargo Data APL

AL=5D002C1A

ECCN= 5D002TSU

Embargo Data RFS

AL=N

ECCN= 5D002TSU

FieldTrial: ☐

eeQS: ☐

General Availability: ☒

Notice:

This document contains confidential information that is proprietary to Siemens AG. No part of its contents may be used, copied, disclosed, or conveyed to any party in any manner whatsoever without prior consent.

¹

Switch on hidden text if you need help for filling out this release note.

DECLARATION DATE: Date : 2008-02-13
DECLARED BY: corresponding PL-Development : Dr. Hoefig, Jürgen
corresponding Test TPL : Faulhaber, Lothar

DELIVERABLES: **Full Release:** ☒ **Delta Release:** ☐

Software: [Refere to SWS/G-DMS structure according to Product Name and SW-Version](#)

Hardware: [Refere to chapter: Hardware Revisions supported](#)

Abstract:

These Release Notes provide general information about the release, generics, and other relevant notes for the corresponding product and its correction versions. These Release Notes also list and describe the known problems, restrictions and workarounds.

Table of Contents

1	DOCUMENTATION REFERENCE:	5
2	HISTORY OF CHANGE (RELEASE NOTE)	6
3	PRODUCT AND DIAGNOSTICS STRUCTURE IN G-DMS / SWS AND ICTS	8
3.1	PRODUCT STRUCTURE	8
3.2	DIAGNOSTICS STRUCTURE	8
3.3	DIAGNOSTICS REQUIREMENTS	9
4	SECURITY POLICY	10
4.1	HiSAT	10
5	HARDWARE AND SOFTWARE COMPATIBILITY	11
5.1	HARDWARE REVISIONS SUPPORTED	11
5.2	FIRMWARE RELEASES SUPPORTED	11
5.3	LOADWARE RELEASES SUPPORTED	11
5.4	SOFTWARE RELEASES SUPPORTED	12
5.4.1	Siemens (HiPath)	12
5.4.2	T-Systems (Octopus)	12
	EMBEDDED MODULES IN APPLICATION SW	13
5.5	OPERATING SYSTEMS SUPPORTED	13
5.6	COMPLIANT PRODUCTS	13
5.6.1	Siemens (HiPath)	13
5.6.2	T-Systems (Octopus)	14
5.7	MANAGEMENT INFORMATION BASE	15
5.8	LICENSE MANAGEMENT	15
5.9	REMOTE SERVICEABILITY	15
5.10	SIRA ACCESS USING PPP WITHOUT CALLBACK	15
6	RELEASE VERSION HISTORY	17
7	CHANGES	19
7.1	IMPLEMENTED CHANGE REQUESTS	19
7.2	PROBLEMS FIXED	21
8	OUTSTANDING CUSTOMER PROBLEMS	22
9	OUTSTANDING PROBLEMS FOUND IN SYSTEM TEST	22
10	INITIAL INSTALLATION	23
10.1	SERVICE MANUAL	23
10.2	DEVIATIONS FROM SERVICE MANUAL	23
10.3	INSTALLATION OF SSL CERTIFICATE	23
10.4	USB DRIVER INSTALLATION	23
11	UPDATE INSTALLATION	24
11.1	SERVICE MANUAL	24
11.2	DEVIATIONS FROM SERVICE MANUAL	24
11.3	DURATION OF SOFTWARE IMAGE TRANSFER	24
11.3.1	Software update via WBM	24
11.3.2	Extract the web image	24
11.4	UPDATE EXISTING SYSTEMS TO THIS VERSION	24
12	IMPORTANT INFORMATION	25
12.1	SIP PROVIDER	25
12.2	API120: GATEKEEPER REGISTRATION	25
12.3	SIRA ACCESS USING PPP WITHOUT CALLBACK	25
12.4	DEFAULT PSTN ROUTING PARTNER (SMR-06)	25
12.5	DTMF SIGNALING VIA SIP PROVIDER	26

12.6	EMERGENCY CALL VIA SIP PROVIDER.....	26
12.7	ITSP FOR DSL TELEPHONY	26
12.8	STORAGE DATA AFTER CHANGES WITH MANAGER E	26
12.9	NEW FILE "HP2K_V1_BUNDLE...ZIP"	26
13	RESTRICTIONS.....	27
13.1	NEW OR CHANGED RESTRICTIONS FOR THIS CURRENT SW RELEASE	27
13.2	RESTRICTIONS FOR THIS PRODUCT-VERSION.....	27
13.2.1	<i>EVM Backup via WBM.....</i>	27
13.2.2	<i>DMZ.....</i>	27
13.2.3	<i>AP1120 and H.235 Security (G66348)</i>	27
13.2.4	<i>SRTP.....</i>	27
13.2.5	<i>Basic H.323 voice call with Microsoft NetMeeting.....</i>	27
13.2.6	<i>Licensing Wizard.....</i>	28
13.2.7	<i>CSTA-Monitoring.....</i>	28
13.2.8	<i>Modem calls.....</i>	28
13.2.9	<i>CLIP no screening.....</i>	28
13.3	LAN / WAN / DMZ INTERFACE.....	28
13.3.1	<i>WAN Statusinformation not visible</i>	28
13.4	NETWORKING H2000 V1.0<=> H3000/5000 AND H4000	28
13.4.1	<i>Networking H2000 V1.0 – H3000/5000 V6.0.....</i>	28
13.4.2	<i>IP networking and IP phones behind 3rd party Firewalls and VPN.....</i>	28
14	ATTACHMENTS.....	29
14.1	ATTACHMENT NAME1	29

1 DOCUMENTATION REFERENCE:

English	Documents	Hyperlinks	Remarks
	E-DOCU	Start E-Docu	
	Product E-Docu	Link	
	Installation and Startup	see Product E-Docu	
	Operating Manual	see Product E-Docu	
	Quick Reference Guide	see Product E-Docu	
	Administrator Manual	see Product E-Docu	
	Sales info	Not available	
	BLS-Product-Homepage	Not available	
	GVS Product-Homepage	Not available	
	C-SWS Brussels	Start SWS Main Page	
	Compatibility Information	See at Product on SWS	

Other		Hyperlinks	Remarks

2 History of Change (Release Note)

Version	Date	Changes	Author
1.0.0	2005-07-01	Initial creation (released version for FieldTrial)	Stefan Seidel Frank Dickamp
1.1.0	2005-10-20	Add changes for binder HE620Y.03.277 (M2)	Frank Dickamp Carsten Buschmann
1.1.1	2005-10-28	Add changes for binder HE620Y.03.280 (M3)	Frank Dickamp Carsten Buschmann
1.1.2	2005-11-15	Changes for M3	Frank Dickamp Georg Sünkler
1.1.3	2005-11-18	Changes of P-Numbers	Binz
1.5.0	2006-02-23	SMR-05 EEQS	L. Faulhaber
1.5.1	2006-02-28	SMR-05: General Availability	Uwe Teichert
1.5.2	2006-03-03	SMR-05: added information for implemented AP1120 CR	Uwe Teichert
1.5.3	2006-03-30	SMR-05 – 1.CV	L. Faulhaber
1.5.4	2006-03-31	FW version corrected, only in ReleaseNote	G. Sünkler
1.5.5	2006-05-09	SMR-05 – 2.CV	L. Faulhaber
1.5.6	2006-05-15	SMR-05 – 3.CV	L. Faulhaber
1.6.0	2006-03-10	SMR-06: Field_Trial SIP Provider HE620Y.06.423-004	Thomas Kaiser
1.6.1	2006-03-17	Add missing tickets from SMR-05 support 2. Version for Fieldtrial SIP Provider. (06.429)	Georg Sünkler
1.6.2	2006-03-24	3. Version for Fieldtrial SIP Provider. (06.432)	Georg Sünkler
1.6.3	2006-03-31	4. Version for eeQS SIP Provider DTAG. (06.435)	Georg Sünkler
1.6.4	2006-04-13	5. Version for eeQS SIP Provider DTAG. (06.438)	Georg Sünkler
1.6.5	2006-05-04	6. Version for eeQS SIP Provider DTAG. (06.438-005)	Georg Sünkler
1.6.6	2006-05-11	7. Version for eeQS SIP Provider DTAG. (06.439)	Georg Sünkler
1.6.7	2006-05-24	8. Version for eeQS SIP Provider DTAG. (06.439-002)	Georg Sünkler
1.6.8	2006-05-31	Vorab	
1.6.9	2006-06-13	SMR-06: General Availability	Georg Sünkler
1.6.10	2006-07-14	Correcting translation (hints from USA)	Georg Sünkler
1.6.11	2006-08-07	SMR-06 – 1.CV	Georg Sünkler
1.7.0	2006-10-30	SMR-07 – eeQS	Georg Sünkler
1.7.1	2006-11-17	SMR-07 – eeQS, change Product Item Number	Georg Sünkler
1.7.2	2006-12-06	V1.0 R 7.0.0 – General Availability (SMR-07)	Uwe Teichert
1.7.3	2007-01-12	Add new Firmware Product Item number for SWS support via PRISMA.	Georg Sünkler
1.9.3	2006-12-26	Add changes for binder HE620Y.09.629 Modification according to SMR Release Template	Michael Paludetti
1.9.4	2006-12-15	Add changes for binder HE620Y.09.632 Modification according to SMR Release Template	Michael Paludetti
1.9.5	2006-12-21	Add changes for binder HE620Y.09.634 Modification according to SMR Release Template	Michael Paludetti

1.9.6	2007-01-17	Add changes for binder HE620Y.09.648 Modification according to SMR Release Template	Michael Paludetti
1.9.7	2007-01-29	Add changes for General Availability	Michael Paludetti
1.9.8	2007-02-02	Add Web-Image	Lothar Faulhaber
1.9.9	2007-02-08	Product Item number for Web-Image modified	Lothar Faulhaber
1.9.10	2007-02-09	Product Item number for Application SW modified	Lothar Faulhaber
1.9.11	2007-03-29	V1.0 R9.6.0 – HE620Y.09.649	Lothar Faulhaber
1.9.12	2007-05-16	V1.0 R9.7.0 – HE620Y.09.681	Lothar Faulhaber Uwe Teichert
1.9.13	2007-05-24	V1.0 R9.7.0 – HE620Y.09.681 Changes for Item-No. FW	Lothar Faulhaber
1.9.14	2007-07-30	V1.0 R9.8.0 – HE620Y.09.691	Lothar Faulhaber
1.10.0	2007-09-14	V1.0 R10.0.0 – HE620Y.10.734_001	Lothar Faulhaber
1.10.1	2007-12-05	V1.0 R10.1.0 – HE620Y.10.740	Lothar Faulhaber
1.10.2	2007-12-06	V1.0 R10.1.0 – HE620Y.10.740 Add description for CR	Lothar Faulhaber
1.10.3	2008-02-13	V1.0 R10.2.0 – HE620Y.10.743	Lothar Faulhaber

3 Product and Diagnostics Structure in G-DMS / SWS and ICTS

3.1 Product Structure

Structure in G-DMS / SWS

Main Category	Communications Systems
Product Family	HiPath 2000
Product	HiPath 2020_2030
Product Version	HiPath 2020_2030 V1.0
Product Item #	P30152-P1194-P4-24 (V1.0 R10.2.0)

Structure in G-DMS / SWS

Main Category	OEM Products
Product Family	Comfort Open
Product	Comfort Open System
Product Version	Comfort Open System V1.0
Product Item #	P30152-P1194-P4-24 (V1.0 R10.2.0)

3.2 Diagnostics Structure

Structure in Case Tracking System ICTS

Product Family	Communication Systems
Product Group	HiPath 2000
Product Type	HiPath 2020_2030
Product Version	V1.0
SW Version	P30152-P1194-P4-24 (V1.0 R10.2.0)

Structure in Case Tracking System ICTS

Product Family	OEM Products
Product Group	Comfort Open
Product Type	Comfort Open System
Product Version	V1.0
SW Version	P30152-P1194-P4-24 (V1.0 R10.2.0))

3.3 Diagnostics Requirements

- Angaben RCC <https://www.g-dms.com/livelink/lisapi.dll?func=ll&objId=3199413&objAction=Browse&viewType=1>
- Angaben BLS <https://www.g-dms.com/livelink/lisapi.dll?func=ll&objId=3199413&objAction=Browse&viewType=1>

4 Security Policy

Approved for the following virensscanner:

Manufacturer	Tool	Version
Trend Micro	Trend Micro OfficeScan Client	V 7.0
Trend Micro	Trend Micro Server Protect	V 5.58

4.1 HiSAT

Please access HiSAT to get the current status about Security Alert Telegrams for your product:

[Start HiSAT Database](#)

[Start Product in HiSAT](#)

5 Hardware and Software Compatibility

5.1 Hardware Revisions supported

SLH or Board	Product “long” name	Product Revision
SLH	Not relevant	
HiPath 2000	REGS 2020	S30810-Q2321-X110-*
HiPath 2000	REGS 2030	S30810-Q2321-X210-*
Comfort Open	DTAG	S30810-Q2321-X230-*
T-Octopus F270 IT	DTAG	S30810-Q2321-X240-*

5.2 Firmware Releases supported

List of FW or FW Product Name	FW Version (e.g. Vx[y] Rm.f.h)
Firmware	HE620Y.50.FMW.007-240.img

5.3 Loadware Releases supported

Board (e.g. TMOM2) List of LW Part Number (e.g. Q6400-X888)	FCT-ID	LW changed Ver/Mo Correction in (e.g. MSC.....)	Loadware Variant (e.g. pzfgmom40.g1.01 8)	Production Date (yyyy-mm-dd)
---	--------	--	--	---------------------------------

[List of LW](#) Not relevant

5.4 Software Releases supported

5.4.1 Siemens (HiPath)

List of SW or SW Product Name	SW Version (e.g. Vx[y] Rm.f.h)
Microsoft Internet Explorer	Version 7
Java Runtime Enviroment	1.4.2 and higher
USB Treiber	5.1.2600.0
Siemens HiPath 3000 Manager E	V7 R3.0.0 (P30152-P1266-P3-14) (HA640B.50.209)

Siemens HiPath 3000 Manager C	V7 R3.0.0 (P30152-P1266-P4-14) (HA640B.50.209)
Siemens HiPath 3000 Manager CU	V7 R3.0.0 (P30152-P1266-P5-14) (HA640B.50.209)
DB Feature Server	V7 R3.0.0 (P30152-P1266-P16-16) (HV640B.50.209)
HiPath 2000 CD	
Online Help Files: WBM Administrator Doc. Feature Description Service Documentation	HZ620D.60.025 (Issue 3) LM620D.60.001 (Issue 4) SH620D.60.030 (Issue 5)
Deployment Service	P30152-P1164-A100-16 (V1 R1.27.0)
Audio Converter	Version 1.1.1.5

5.4.2 T-Systems (Octopus)

List of SW or SW Product Name	SW Version (e.g. Vx[y] Rm.f.h)
KC-Manager	V7 R3.0.0 (P30152-P1266-T3-14) (HA640B.50.209)
T-Manager	V7 R3.0.0 (P30152-P1266-T19-14) (HA640B.50.209)
K-Manager	V7 R3.0.0 (P30152-P1266-T4-14) (HA640B.50.209)
DB-Feature Server	V7 R3.0.0 (P30152-P1266-P16-2) (HV640B.50.209)
T-Octopus F V6.0 IP-Netpackage incl. ComScendo	P30152-P1205-T12-7 (V6.0 R10.0.0) lpnet_V6_R10.zip

*) The products and software issues for additional components mentioned in the tables above have to be seen as a list of finally tested products. There are further products and software issues which can be connected. For such products please refer to their own release and change notes respectively.

Embedded modules in Application SW

[aps]	HE620Y.10.743	
[fp]	HE620B.10.743	1696149dca8696fd65d41a2ea5733fdb
[msp.ko]	HI-MSP.15.001	a3757e667c4032b337755410898b3efe
[dspsw]	HI-DSP.10.013	87621888cd26ddc9703dbb5d5dde1b96
[ldh]	HI-LDH.15.014	75e4200b185df4fbcd584eaa992ac836
[pm]	HE620M.09.003	a30177d23c89c2dbeda602a1a0a6d651

[pppm] HI-PPP.10.002 1124cd46be6f03cb89713087956b076e
[cla] TB-CLA.11.183 4c1525ef92af0ac2fd7347b2738ec85b
[c1c] TB-CLC.11.119 4c1525ef92af0ac2fd7347b2738ec85b

5.5 Operating Systems supported

Operating System Name	Operating System Version
Microsoft Windows 2000 Server and Professional	SP4
Microsoft Windows 2003 Server Standard and Enterprise Edition	All
Microsoft Windows XP Professional	SP1 and SP2

5.6 Compliant Products

5.6.1 Siemens (HiPath)

Product Family List of Compliance	Product	SW Version (e.g. Vx[y] Rm.f.h)
HiPath Mobile Office	HiPath Entry Voicemail for HiPath 33xx,35xx	P30152-P1159-P1-11 (V7.39)
Attendant	optiClient Attendant (7.0.6)	P50038-P1507-A7-6 (V7.0 R6.0.0)
optiClient 130	optiClient 130 (5.1.173.0000)	P30152-P1149-A2-7 (V5.1 R5.0.0)
optiPoint 400	optiPoint 400 standard	P30152-P1326-A200-18 (V5.1.18)
optiPoint 410	optiPoint 410 entry	P30152-P1285-A100-49 (V5 R4.5.0)
optiPoint 410	optiPoint 410 economy	P30152-P1285-A200-49 (V5 R4.5.0)
optiPoint 410	optiPoint 410 economy plus	P30152-P1285-A300-49 (V5 R4.5.0)
optiPoint 410	optiPoint 410 standard	P30152-P1285-A400-49 (V5 R4.5.0)
optiPoint 410	optiPoint 410 advance	P30152-P1285-A500-49 (V5 R4.5.0)
optiPoint 420	optiPoint 420 economy	P30152-P1286-A200-49 (V5 R4.5.0))
optiPoint 420	optiPoint 420 economy plus	P30152-P1286-A300-49 (V5 R4.5.0))
optiPoint 420	optiPoint 420 standard	P30152-P1286-A400-49 (V5 R4.5.0)
optiPoint 420	optiPoint 420 advance	P30152-P1286-A500-49 (V5 R4.5.0)
optiPoint 600	optiPoint 600 Office IP	P30152-P1332-A100-18 (V5.1.18)
optiPoint 150S	optiPoint 150S	P30152-P1316-A100-30 (V1 R0.31.0)
optiPoint 410S	optiPoint 410 standard SIP	P30152-P1291-M400-35 (V5 R0.35.0)
optiPoint 420S	optiPoint 420 standard SIP	P30152-P1292-M400-35 (V5 R0.35.0)
HiPath TAPI	HiPath TAPI 120	P30370-P270-A-15 (V2 P0.15.0)
HiPath TAPI	HiPath TAPI 170	P30370-P271-A-21 (V2 P0.21.0)
HiPath CAP	HiPath CAP V3.0	P30152-P1155-A1-6 (V3 R4.2.0)
Workpoint Clients	Deployment Service	P30152-P1164-A100-16 (V1 R1.27.0)
HiPath 3000	HiPath 3000 V6.0	P30152-P1205-P1-53 (V6 R10.4.0) P30152-P1205-P2-51 (V6 R10.4.0)
HiPath 3000	HiPath 3000 V7	P30152-P1266-P1-22 (V7 R3.2.0) P30152-P1266-P2-22 (V7 R3.2.0)

HiPath 5000	HiPath 5000 RSM Image V6.0	P30152-P1205-P12-9 (V6.0 R10.0.0)
HiPath 4000	HiPath 4000	See chapter 13.4.1

5.6.2 T-Systems (Octopus)

Product Family List of Compliance	Product	SW Version (e.g. Vx[.y] Rm.f.h)
T-OCTOPHONE F Terminal	OctoClient 130 V5.1	P30152-P1206-P2-3 (V5.1 R1.0.0) Version 5.1.166.1001
T-OCTOPHONE F Terminal	T-Octophon F10 / F20 / 30 /40	All released versions
T-OCTOPHONE F Terminal	T-Octophon F30 IP	V.5.2.18
T-OCTOPHONE F Terminal	T-Octophon F11 / F21 / 31 /41 IP	P30152-P1285-T110-30 (V5 R1.35.0) P30152-P1285-T210-30 (V5 R1.35.0) P30152-P1285-T410-30 (V5 R1.35.0) P30152-P1285-T510-30 (V5 R1.35.0)
T-OCTOPHONE F Terminal	T-Octophon F31 / 41 IP SL	P30152-P1286-T410-30 (V5 R1.35.0) P30152-P1286-T510-30 (V5 R1.35.0)
T-OCTOPHONE F Terminal	T-Octophon F50 (Up0) T-Octophon F50 IP	V 2.2.15 V 5.2.18
T-OCTOPHONE F ComCenter	T-Octopus F ComCenter Office / Messaging V1.3 (ACD F-Komfortpaket V1.3) (HPCO)	Version 1.3, Build 4564, SA 10

5.7 Management Information Base

Product forwards SNMP traps according to a MIB: ☒

5.8 License Management

Product is licensed via CLS: ☒ CSC: ☐

Other Licensing: ☐ If you are using others, please describe below:

5.9 Remote Serviceability

Product is certified for SIRA: ☒ HiSPA: ☐ RTPatch: ☐

Other Remote Serviceability: ☐ If you are using others, please describe below:

Type of Installation	Transfer time via SIRA/HiSPA	Installation Time
SW-Update via WBM (Application)	approx. 1.5 hours	approx. 6 min
SW-Update via WBM (Rootfilesystem)	approx. 0.5 hours	

SW-Update via WBM (Firmware)	approx. 20 min.	approx. 3 min
DataBackup via WBM	approx. 2 min.	-
CDB-Transfer via HiPath 3000 Manager E complete	approx. 1 min.	-
CDB-Transfer via HiPath 3000 Manager E partial	approx. 15 sec	-

Hints for remote serviability:

5.10 SIRA Access using PPP without callback

Following settings are currently necessary, when SIRA is used for PPP remote access without callback:
Use CHAP authentication mode "CHAP-Host" and always the same PPP username "HTS" (for SIRA Domain Germany) in PSTN peer settings of HiPath 2000.

HiPath 2000 is authenticator in CHAP process. This means that the username sent by the SIRA access router, is checked by HiPath 2000.

HiPath 2000 is currently configured with "One-Way-Chap" in SIRA, similar to HG1500 in HiPath 3000.
The same username ("HTS" in Germany) is always sent by the SIRA access router in the CHAP response message. This username is checked by HiPath 2000.

6 Release Version History

List of all released SW Versions since Major SW Release (M3), i.e. all SW Releases in PRISMA/SWS having been released within this Product-Version:

SW Version (e.g. Vx.y] Rm.f.h)	Production-Version (e.g. APS)	Date Created	Remarks
03.277	P30152-P1194-P4-04 / HE620Y.03.277 : rootfs_regs.cramfs_HI- RFS.1Y.010_03.277.img opt_he620_03_277_019.jffs2.img HE620Y.50.FMW.005-269.img	2005-10-20	M2 Version root file system Application Software Firmware
03.284	P30152-P1194-P4-05 / HE620Y.03.284 : rootfs_regs.cramfs_HI- RFS.1Y.012_03.284.img opt_he620_03_284_026.jffs2.img HE620Y.50.FMW.005-269.img	2005-11-15	M3 Version root file system Application Software Firmware
05.387	P30152-P1194-P4-07 / HE620Y.05.387 : H2K-05.387-FW-OS-APPL.zip	2006-02-28	SMR-05
05.389	P30152-P1194-P4-07 / HE620Y.05.389 : H2K-05.389-FW-OS-APPL.zip	2006-03-30	SMR-05, 1.CV
05.391	P30152-P1194-P4-07 / HE620Y.05.391 : H2K-05.391-FW-OS-APPL.zip	2006-05-09	SMR-05, 2.CV
05.392	P30152-P1194-P4-07 / HE620Y.05.392 : H2K-05.392-FW-OS-APPL.zip	2006-05-09	SMR-05, 3.CV
06.423_004	P30152-P1194-P4-01 / HE620Y.06.423-004 : H2K-06.423-004-FW-OS-APPL.zip	2006-03-10	SMR-06 SIP Provider 1.Release for eeQS
06.429	P30152-P1194-P4-01 / HE620Y.06.429 : H2K-06.429-FW-OS-APPL.zip	2006-03-17	SMR-06 SIP Provider 2. Release for eeQS
06.432	P30152-P1194-P4-01 / HE620Y.06.432 : H2K-06.432-FW-OS-APPL.zip	2006-03-24	SMR-06 SIP Provider 3. Release for eeQS
06.435	P30152-P1194-P4-08 / HE620Y.06.435 : H2K-06.435-FW-OS-APPL.zip	2006-03-31	SMR-06 SIP Provider 4. Release for eeQS DTAG
06.438	P30152-P1194-P4-08 / HE620Y.06.438 : H2K-06.438-FW-OS-APPL.zip	2006-04-13	SMR-06 SIP Provider 5. Release for eeQS DTAG
06.438_005	P30152-P1194-P4-08 / HE620Y.06.438_005 : H2K-06.438_005-FW-OS-APPL.zip	2006-05-04	SMR-06 SIP Provider 6. Release for eeQS DTAG
06.439	P30152-P1194-P4-08 / HE620Y.06.439 : H2K-06.439-FW-OS-APPL.zip	2006-05-11	SMR-06 SIP Provider 7. Release for eeQS DTAG

06.439_002	P30152-P1194-P4-08 / HE620Y.06.439_002 : H2K-06.439_002-FW-OS-APPL.zip	2006-05-24	SMR-06 SIP Provider 8. Release for eeQS DTAG
06.439_005	P30152-P1194-P4-08 / HE620Y.06.439_005 : H2K-06.439_005-FW-OS-APPL.zip	2006-06-13	SMR-06
06.475	P30152-P1194-P4-08 / HE620Y.06.475 : H2K-06.475-FW-OS-APPL.zip	2006-08-07	SMR-06, 1.CV
07.551	P30152-P1194-P4-xx / HE620Y.07.551	2006-11-16	SMR-07
07.554	P30152-P1194-P4-16 / HE620Y.07.554	2006-12-28	SMR-07
09.621	P30152-P1194-P4-xx / HE620Y.09.621	2006-10-20	SMR-09, Fieldtrial
09.622	P30152-P1194-P4-xx / HE620Y.09.622	2006-10-27	SMR-09, Fieldtrial
V1.0 R9.2.0	P30152-P1194-P4-15 / HE620Y.09.629	2006-11-27	SMR-09, Fieldtrial
V1.0 R9.3.0	P30152-P1194-P4-15 / HE620Y.09.632	2006-12-15	SMR-09, Fieldtrial
V1.0 R9.4.0	P30152-P1194-P4-17 / HE620Y.09.634	2006-12-21	SMR-09, Fieldtrial
V1.0 R9.5.0	P30152-P1194-P4-18 / HE620Y.09.648	2007-01-17	SMR-09
V1.0 R9.6.0	P30152-P1194-P4-19/ HE620Y.09.649	2007-03-29	SMR-09, 1.CV
V1.0 R9.7.0	P30152-P1194-P4-20/ HE620Y.09.681	2007-05-24	V1.0 R9.7.0
V1.0 R9.8.0	P30152-P1194-P4-21/ HE620Y.09.691	2007-07-30	V1.0 R9.8.0
V1.0 R10.0.0	P30152-P1194-P4-22/ HE620Y.10.734_001	2007-09-14	V1.0 R10.0.0
V1.0 R10.1.0	P30152-P1194-P4-23/ HE620Y.10.740	2007-12-06	V1.0 R10.1.0
V1.0 R10.2.0	P30152-P1194-P4-24/ HE620Y.10.743	2008-02-13	V1.0 R10.2.0

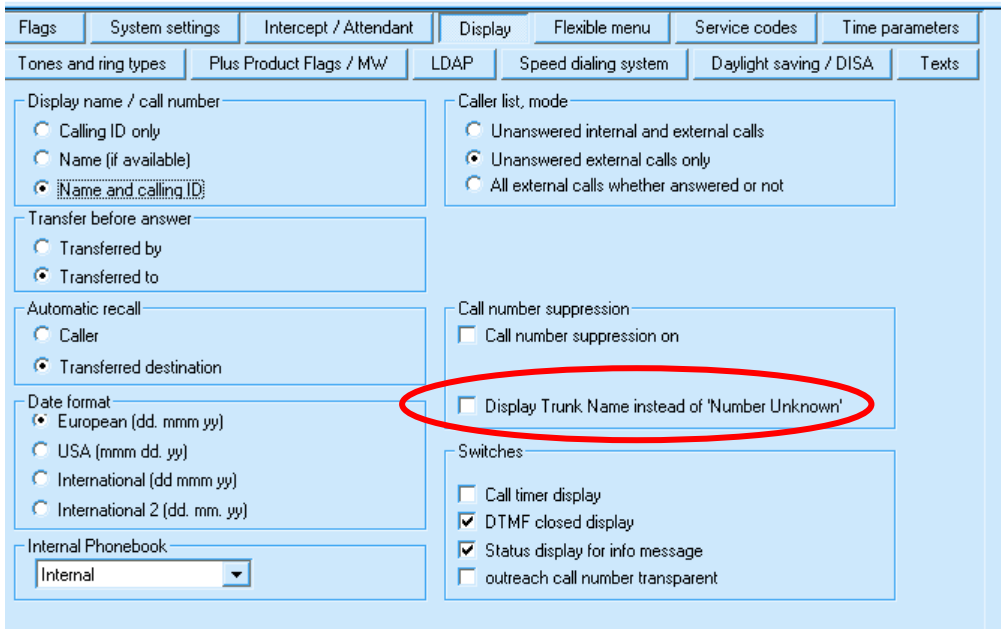
7 Changes

7.1 Implemented Change Requests

CR with Fix Release 10.1.0

CR – Number	Summary
	Including Hyperlink to detailed attachment in chapter “Attachments”
RQ00023155-CR1 RQ00022993-CR1 MR H17747	SNMP traps configurable In HiPath3000 SNMP traps can be configured by Manager-E. Up to now there are only a few traps in HiPath2000. With this CR the same functionality like in HiPath3000 is provided.

CR with Minor Release 10.0.0

CR – Number	Summary
	Including Hyperlink to detailed attachment in chapter “Attachments”
RQ00019515-CR2	<p>Private/unknown extensions</p> <p>With RQ00019515-CR1 the handling of unknown calling party numbers/name has been changed on the display of the phone. Instead of the Route name the fix text “number unknown” is displayed in these cases.</p> <p>Due to different applications which made use of displaying the route name the behavior is configurable with this CR. Per default the text “number unknown” is displayed.</p> <p>The Flag is added to the “system parameters” spread sheet :: Display:</p>  <p>The screenshot shows the 'Display' tab in the Manager-E configuration interface. It contains various settings for call display, including caller list mode, transfer before answer, automatic recall, date format, and call number suppression. The checkbox 'Display Trunk Name instead of 'Number Unknown'' is highlighted with a red circle.</p>
RQ00023176-CR1	<p>Silent Monitor Function for country code China</p> <p>The feature Silent Monitoring is released for a limited number of countries based on the country code. With this CR the feature is opened for country code “China”.</p>
RQ00018192 RQ00018380	<p>New national voice prompts for the Entry Voice Mail</p> <p>For the EVM (Entry Voice Mail) the following language files are released:</p> <ol style="list-style-type: none"> 1. Danish 2. Norwegian

3. Swedish
4. Slovenian

The use of the new voice prompts is independent of the software release. With this release the default language per country code is changed to the most likely values. The following languages are now available

Languages	Abbr .
CHINESE	zhcn
CZECH	cscz
DANISH	dadk
DUTCH	nlnl
ENGLISH	enuk
ENGLISH_US	enus
ESTONIA	etee
FINISH	fifi
FLEMISH	nlbe
FRENCH	frfr
GERMAN	dede
GREEK	elgk
HUNGARIAN	huhu
ITALIAN	itit

Languages	Abbr .
KOREAN	kokp
LATVIAN	lvlv
LITHUANIAN	ltlt
NORWEGIAN	nono
POLISH	plpl
PORTUGUESE	ptpt
PORT_BRASIL	ptbr
SERBIAN	Srcs
SLOVENIAN	sls1
SPANISH	eses
SPANISH_INT	esar
SWEDISH	svse
TURKISH	trtr

RQ00022155

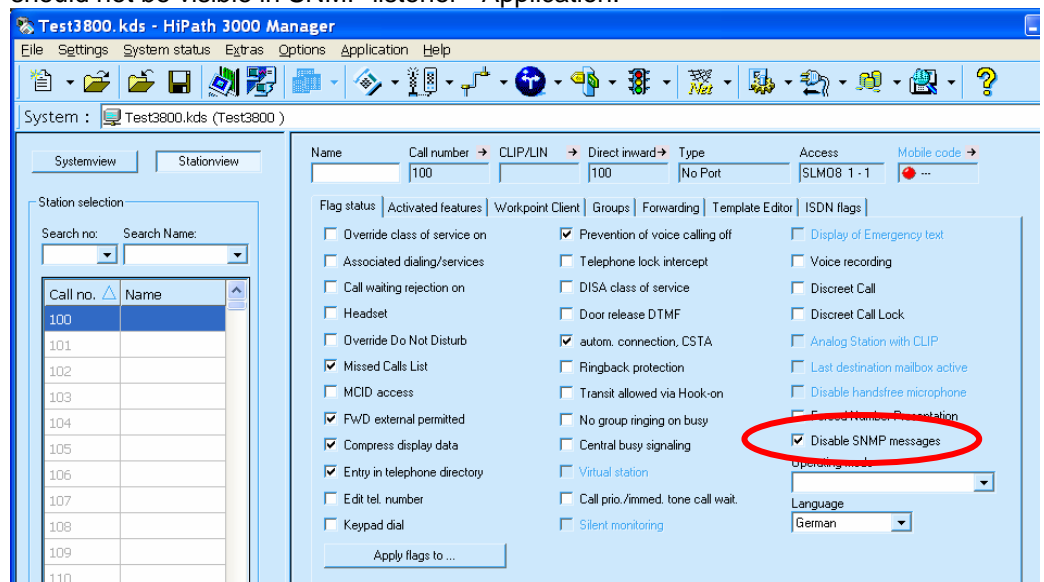
Deactivation of loudspeaker of WL2 when dialing

If the HiPath telephone book is used from a WLAN phone WL2, the internal loudspeaker of the phone is deactivated. Up to now the speaker is switched on to hand free mode.

RQ00023155

Supervision of subscribers via SNMP

Ports which are removed from the system after working some time are signaled as "omitted/ausgefallen" e.g. via SNMP. A supervision is not possible for those ports. With this CR a new Station Flag will be built in Database and Manager-E. The flag will be named "Disable SNMP messages" and will be placed in Stationview/Flag Status. Its default value will be TRUE. When a Station has this flag set, even if port deactivate - it should not be visible in SNMP listener - Application.



7.2 Problems fixed

Problems solved with Fix Release 10.2.0

ICTS Ticket	MR	Summary
	H23631	No SNMP Trap for disconnected IP Phone
	H15913	RESTART with core_ldh: fLocalizeUrl
	H24404	Wrong signaling if all B-channels are busy

Problems solved with Fix Release 10.1.0

ICTS Ticket	MR	Summary
NA03094530	H21918	Call transfer feature doesn't work for Optipoint
NA03128841	H20314; H22580	call signaling CHESE problem after call-FWD
NA02898588 NA03042275	H04063 H22952	Internal SIP-Phone has no freetone
NA02770905	H03431	No MOH to ext. station in IP-connected H2k

Problems solved with Minor Release 10.0.0

ICTS Ticket	MR	Summary
NA02589827	H03335	OptiCl. 130 go out of order, after restart ok.
NA02673742	H00633	CLC: problems with HHSC2.0
NA02705714	G96800	H2K Wrapper (SIRA Web2) Error
NA02663098	G96588	T38 Fax protocol activated during a talk
NA03002421	H13605	SWupdate via Time order is not carried out
NA02675279	G95764	HP2K-V1 DTMF post DIALING ISSUES
NA02711494	G96886	SIRAWEB2.EXE sporadically crashes with error
NA02800579	H07074	Error in French language (WBM) changing SNTP
NA02505093	G86664	no description of the tracecomponents

8 Outstanding customer problems

ICTS Ticket	MR	Summary
NA03177442	H25928	Call is released after call forwarding in a net
NA03204556	H26296	Optipoint IP phone lockup
NA03213551	H26377	Hipath 2000 V1 Aps 10.740 system crashes with
NA03219227	H27447	no modem transmission over AP1120
NA03232399	H27925	blind transfer doesn't work with Optip 150 S

9 Outstanding problems found in System Test

MRTS Ticket	Summary	Workaround Yes / No
		No / Yes ->
H23931	Fax with T38 via IP-Trunking does not work	Use G711

10 Initial Installation

10.1 Service Manual

See Service Manual chapter 3

10.2 Deviations from Service Manual

10.3 Installation of SSL certificate

If the system is installed via USB wizard, the SSL certificate will be created and imported automatically by wizard. Otherwise, the SSL certificate should be created and activated manually on the system (Expert Mode-> Explorers-> Security-> SSL-> Certificate Management-> Certificate Generation-> Generate Self-Signed Certificate).

Use the system's IP address as "Common Name (CN)" of the certificate. This SSL certificate can be imported into the certificate store of Internet Explorer (IE), in order to prevent IE warning messages.

The WBM address `https://<IP address>` has to be added to "Local Sites" or "Trusted Sites" in IE security settings. Otherwise some WBM functions will be blocked by IE.

10.4 USB driver installation

Connect your PC to HiPath 2000 with an USB cable. Windows will recognize the new USB device and the hardware manager window pops up. Select the provided **usb.inf** file to install the USB driver. It can be necessary, to copy additionally the **usbser.sys** file into the `system32\drivers` directory on Windows 2003 Server systems, when this file not exist.

The device manager will now show an additional serial port (HiPath 2000 Gateway (ComX)).

This can be used with any terminal program (and any baud rate) to access the CLI.

11 Update Installation

11.1 Service Manual

See Service Manual chapter 6.2

11.2 Deviations from Service Manual

11.3 Duration of software image transfer

Loading of software images via LAN takes approximately 6 minutes. Doing the same via ISDN PPP connection (64 kBit/s) it take appoximately 1,5 - 2 hours.

The system will need about 4 minutes to switch over to a new software image. Do not perform any actions, especially no resets, while switching over process is running.

11.3.1 Software update via WBM

The software images for root file system (Root FS) and application can be loaded and activated via WBM one after the other.

If there is necessity to activate them together, so follow the following steps :

- Load the application image (e.g. "APPL-HE620Y-FP-aa.bbb-LDH-xx.yyy.img") but do not activate the software.
- Load the operating system image (e.g. "OS-HE620Y-RFS-cc.ddd-xx.yyy.img") but do not activate the software.
- Select "Activate All" in "Maintenance -> Job List "

When the new software is running, the firmware can be updated.

- Load the firmware image (e.g. "HE620Y.50.FMW.xxx-yyy.img ") and activate the software.
- When software update is done via web image (update via internet), then all files (RootFS, Application, Firmware) can be loaded and activated in one step.

11.3.2 Extract the web image

The web image is not intended to be used for manual software update. Please note that extracting with WinZip may lead into corrupt image files!

11.4 Update existing systems to this version

A direct update from SMR-03 to SMR-06 or higher is not supported. (G61125)

Reason:

After loading the new SMR-06 application image into the SMR-03 system, the system may perform a restart.

Measures:

An update to SMR-05 (HE620Y.05.392; Application-Image + RootFS) has to be done first. Then the SMR-06 software can be loaded (Application Image + RootFS) and activated. The Firmware has to be updated at the end.

A direct update from from V1.0 R10.0.0 to V1.0 R10.1.0 is tested and possible.
Regular update functions via WBM can be used.

See chapter 7.7 for changes due to VPN assistant.

12 Important information

12.1 SIP Provider

For released / planned SIP Provider and country- and provider-specific settings see
Service Information : **INF-06-000857**.

12.2 AP1120: Gatekeeper registration

The party number type has to be changed to "PUU".

Use registration method "multiple", when both analog ports are used.
The party number type must be set to "PUU" (public unknown). An example for valid alias configuration for stations 1234 and 1235 is below (the fields Type2 and Alias2 are optional):

	Type 1	Alias 1	Type 2	Alias 2
1	PUU	1234	H323ID	1234
2	PUU	1235	H323ID	1235

Check the "Analog adapter connected" flag in "Manager E -> Setup station-> Stationview-> Workpoint Client" to get all available features (e.g. call transfer) on AP1120).

12.3 SIRA Access using PPP without callback

Following settings are currently necessary, when SIRA is used for PPP remote access without callback:
Use CHAP authentication mode "CHAP-Host" and always the same PPP username "HTS" (for SIRA Domain Germany) in PSTN peer settings of HiPath 2000.

HiPath 2000 is authenticator in CHAP process. This means that the username sent by the SIRA access router, is checked by HiPath 2000.

HiPath 2000 is currently configured with "One-Way-Chap" in SIRA, similar to HG1500 in HiPath 3000.
The same username ("HTS" in Germany) is always sent by the SIRA access router in the CHAP response message. This username is checked by HiPath 2000.

12.4 Default PSTN Routing Partner (SMR-06)

In the default database there are now 2 preconfigured PSTN Partners :

(1) cls for licensing, only used for Comfort Open

(2) remote ISDN for remote access, can be switched on/off via remote access wizard.

These preconfigured entries should not be used for other purposes! When the PSTN partner is deleted, then according functionality is not given any longer!

12.5 DTMF signaling via SIP Provider

DTMF signalling via SIP Provider is only possible, if DTMF Outband signaling is switched OFF
WBM – Payload – HW Module – DSP Settings.

12.6 Emergency call via SIP Provider

If a system should be operated exclusively over a DSL connection, then the Routing of emergency call and special call numbers can be configured to the ITSP. It is to be examined before absolutely that the ITSP supports these services.

12.7 ITSP for DSL telephony

If the connection to the ITSP is via a router/firewall and the ITSP provides a STUN-Server for NAT-traversal, it's not possible to use a router with "Symetric NAT".
The following routers are tested for the STUN-protocol:

manufacturer/distributor	Cisco	Draytec	Telekom
Type	Cisco 18xx Serie	Vigor 2700 VGI	Speedport 400P
	Cisco 28xx Serie		T-Com Business LAN R

12.8 Storage Data after changes with Manager E

If changes have been made with Manager E, it is necessary to save the data via WBM. Otherwise the data will be lost after, Power Off/On within 1 hour.

12.9 New File "HP2K_V1_Bundle....zip"

Because it's not allowed to extract the Web Image, there has been a new file provided.
The new File "HP2K_V1_Bundle....zip" includes Firmware, Root file system and Application Software

13 Restrictions

13.1 New or changed restrictions for this current SW Release

No Restrictions.

13.2 Restrictions for this Product-Version

13.2.1 EVM Backup via WBM

The backup of all EVM greetings via WBM contains only personal greetings (no messages). The data are copied from an internal backup area, not from the actual configuration. This is done, to reduce breakdown- and transfer times for EVM. This internal backup area is updated every night shortly after 12:00 am / 00:00 o'clock. The backup via WBM will therefore not contain greetings that have been changed during at the current day.

There are no restrictions, when EVM backup is done with HiPath Manager E / KC-Manager.

13.2.2 DMZ

DMZ (**Demilitarized Zone**) describes usually a network area between 2 physical firewalls. HiPath 2000 uses only **one** central firewall configuration. The HiPath 2000 DMZ Port should be used for connecting Mail Server, Web Server, or WLAN Access Points with following constraints:

- A separate IP subnet has to be configured for LAN and DMZ, in order to separate/protect interfaces via system firewall,
- DMZ can be accessed from Internet without exposing internal IT infrastructure (LAN) to Internet

13.2.3 AP1120 and H.235 Security (G66348)

AP1120 can currently not be used, when H.235 security is enabled for IP Trunking and IP Clients.

13.2.4 SRTP

SRTP is not supported.

13.2.5 Basic H.323 voice call with Microsoft NetMeeting

Only basic voice call is supported with MS NetMeeting.

DTMF tone transmission according to RFC2833 has to be disabled in this scenario ("Explorer-> Voice Gateway-> Codec Parameters-> Transmission of DTMF Tones according to RFC2833"). This new implemented H.323 features is unknown to NetMeeting and therefore rejected by this client.

13.2.6 Licensing Wizard

The Licensing Wizard is only released for "Comfort Open".

All other systems have to be licensed via import functionality in WBM Expertmode.

13.2.7 CSTA-Monitoring

CSTA monitoring from connections to ITSPs is not supported. Thus a use of applications like call center is not possible.

13.2.8 Modem calls

Modem calls via SIP-Provider (e.g. Telecash) are not possible.

13.2.9 CLIP no screening

Clip no screening is not possible with SIP provider.

13.3 LAN / WAN / DMZ Interface

13.3.1 WAN Statusinformation not visible

If the WAN Port is used for DSL via Provider T-Online, the WAN status cannot be seen in the menu ExpertMode -> Networkdevices -> WAN (T-Online) Show configuration.

13.4 Networking H2000 V1.0<=> H3000/5000 and H4000

13.4.1 Networking H2000 V1.0 – H3000/5000 V6.0

HiPath 3000/5000 and HiPath 2000 :

With HiPath 5000 RSM (DB Feature Server) : max 32 Nodes are supported

With HiPath 5000 RSM (DB Feature Server) : max 2000 callnumbers are supported

Networking of the HiPath 2000 V1.0 and HiPath 4000 V2.0/V3.0 central or decentralized connections to the ISP are not released but can be requested over a project-specific release.

13.4.2 IP networking and IP phones behind 3rd party Firewalls and VPN Gateways

Possible Problems:

Customers usually want to integrate HiPath 2000 into an existing network with 3rd party Firewall and/or VPN components. We cannot guarantee that voice connections for IP Trunking and from/to IP-phones are properly established via these 3rd party network elements, even if all documented IP ports are open in the 3rd party network elements!

Reason:

HiPath 2000 uses a proprietary Siemens Cornet-NQ (Cornet-IP) protocol, which is tunneled via H.323 Annex M1. Furthermore the H.323 "Fast Start" option is used for call setup. Some Firewalls/VPN gateways have an "Application Layer Gateway and/or Firewall" (ALG / ALF). They usually recognize H.323 messages, but may not properly handle H.323 "Fast Start" option or the Cornet-NQ protocol. This can lead to dropped H.323 messages or faulty H.323 message flow. The observed effects are, depending on scenario, "no payload", "halfway payload", or just devices that show unexpected behaviour on call setup.

Measures:

Make sure that 3rd party Firewalls / VPN Gateways in the customer network :

- has an ALG / ALF function that supports H.323 "Fast Start" and Siemens Cornet-NQ protocol, or
- can disable the ALG / ALF function for H.323 protocol, or
- does not have an ALG / ALF function for H.323 protocol at all.

A network analysis will reveal basic network problems. If there is still uncertainty about a 3rd party component causing problems, then a deeper analysis may be necessary.

14 Attachments

Attention: Please set hyperlinks within this document from the chapter you refer to the attached document.

14.1 Attachment name1