

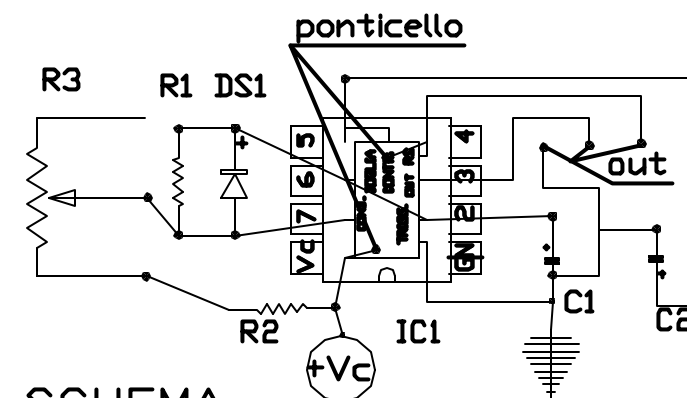
PROVA SERVI
RESCA DAVIDE BO 18-06-'94

COMPONENTI
ELETTRONICI

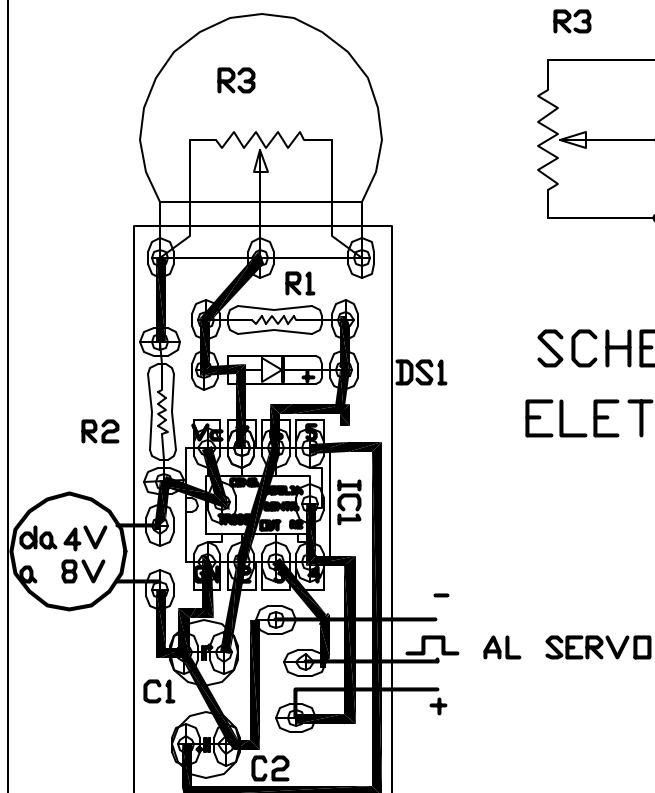
R1=68K 1/4W
R2=2.7K 1/4W
R3=POTENZ. LIN. 5K

C1=0.33uF TANTALIO
C2=0.1uF TANTALIO

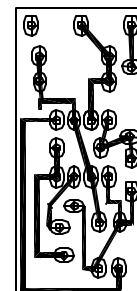
DS1=1N4148
IC1=NE555



SCHEMA
ELETTRICO



SCHEMA PRATICO DI
MONTAGGIO



VISTA LATO RAME
SCALA 1:1