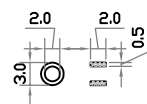
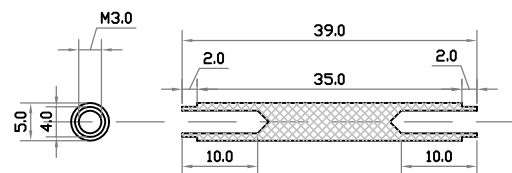


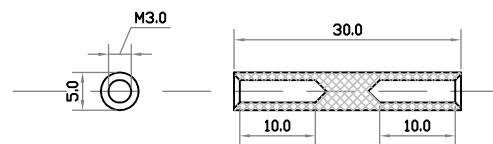
BOCCOLA 1



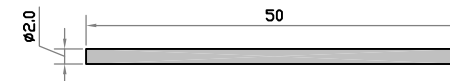
BOCCOLA 2
(facoltativa)



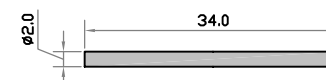
PERNO B e C (ALLUMINIO)



PERNO A (ALLUMINIO)



PERNO D
(ACCIAIO)



PERNO E
(ACCIAIO)

NB

Se il blocchetto di comando viene realizzato in alluminio utilizzare lo spessore di 6 mm.

Se realizzato in plastica utilizzare lo spessore di 10 mm.

