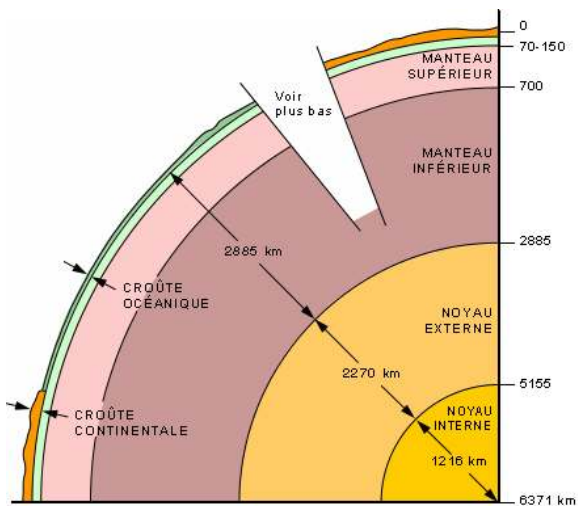
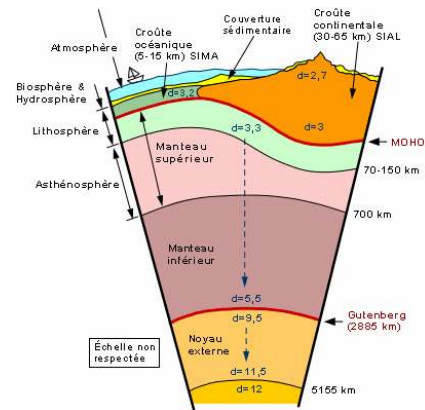


# L'interno della terra

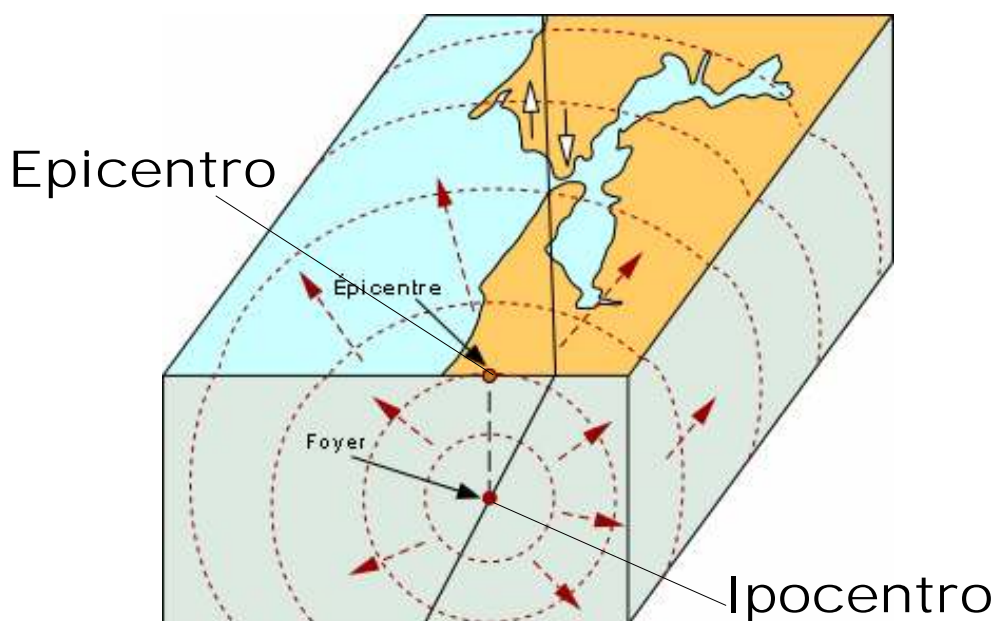


Al di sotto della crosta terrestre si trova il mantello che può essere diviso in superiore ed inferiore al di sotto di questo il nucleo diviso in esterno ed interno.

La crosta oceanica è meno spessa della continentale

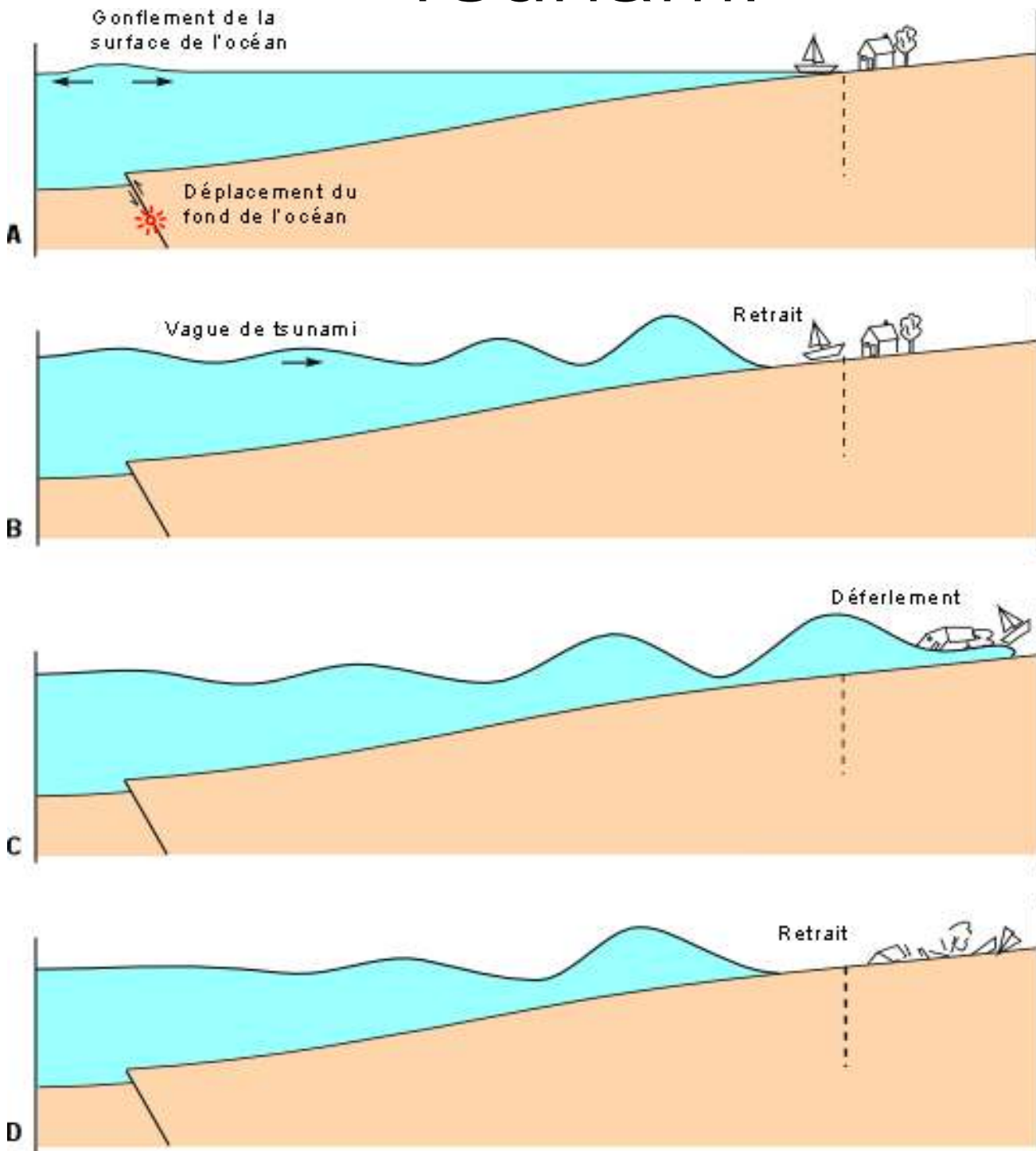


Un terremoto è una rottura della crosta terrestre

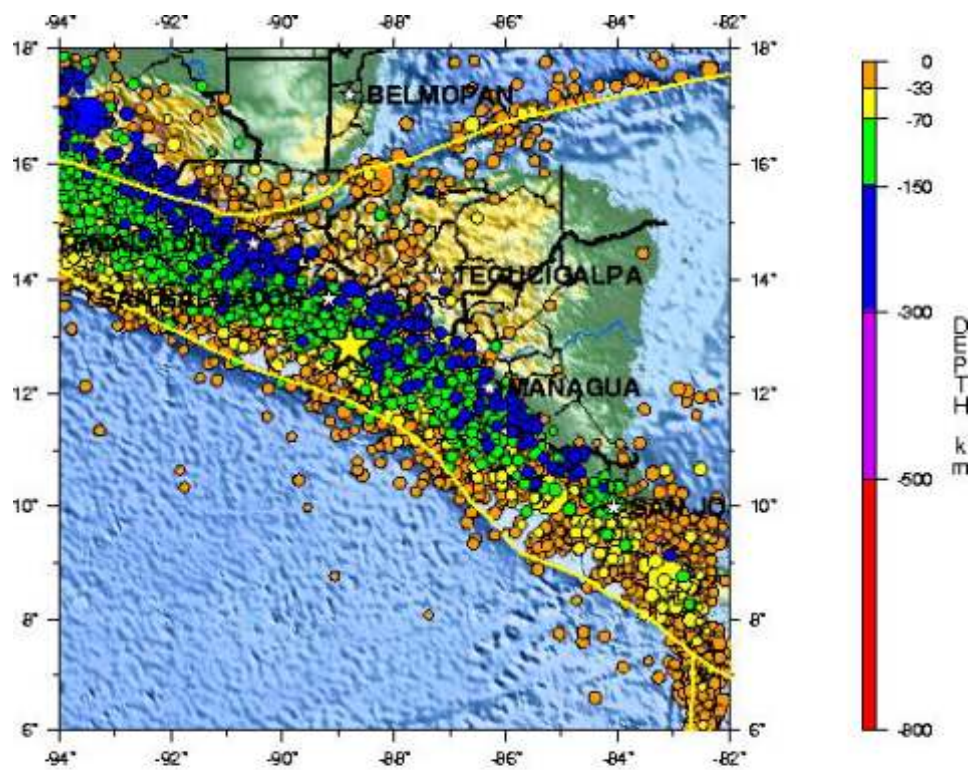
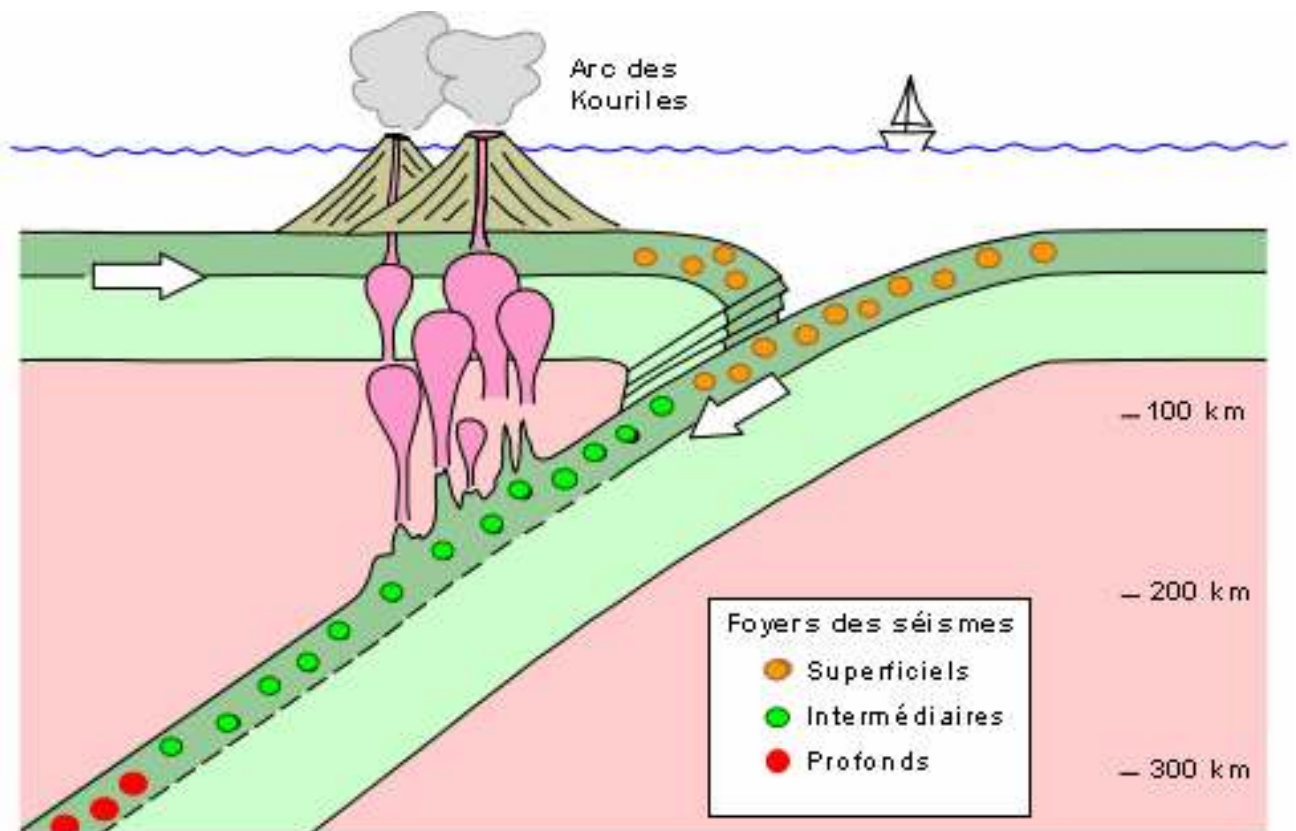


indietro

# Tsunami





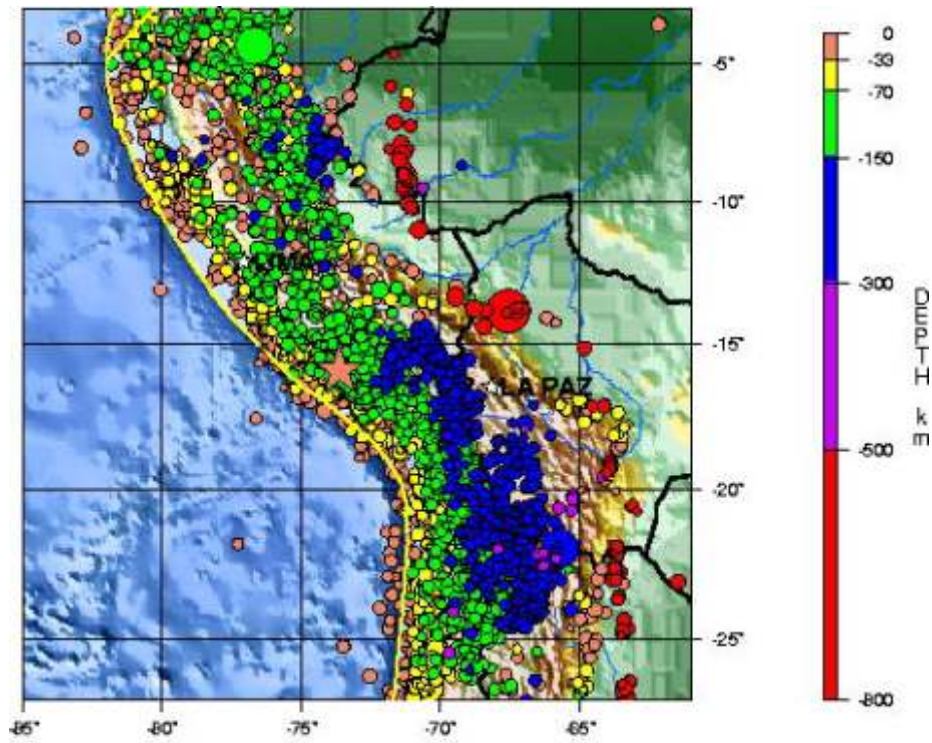


**OFF COAST OF CENTRAL AMERICA**

01/01/13 17:33:29 UTC 12.83N 88.79W Depth: 39.0 km 7.6Mw

Seismicity 1977 - Present, Plate Boundaries in Yellow

USGS National Earthquake Information Center 01/01/13 22:51:09 UTC



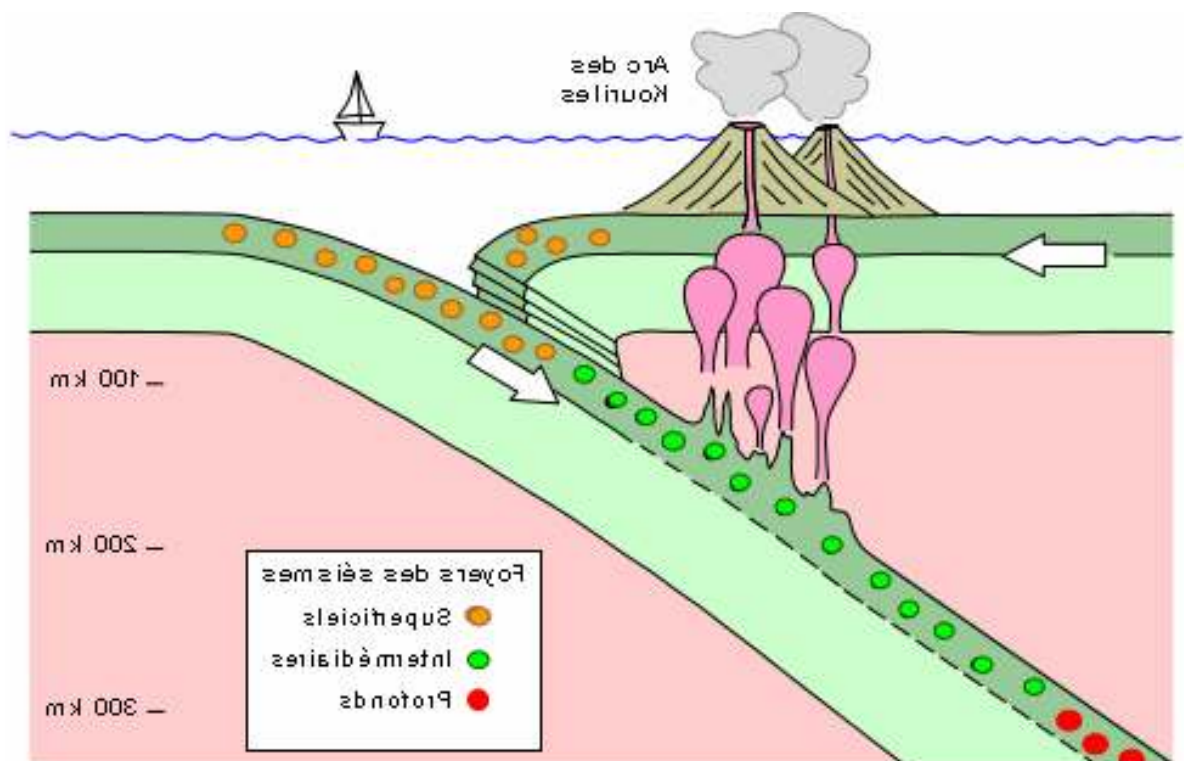
**SOUTHERN PERU.**

2001 06 23 20:33:15.7 15.906S 73.622W Depth: 33N km 6.5mb 8.2MS

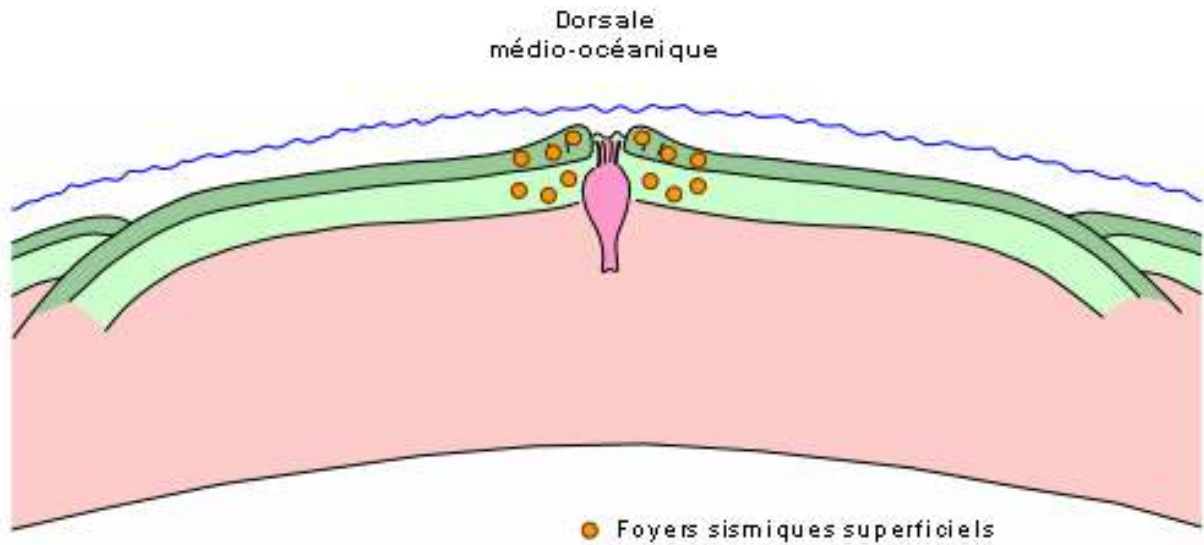
Seismicity 1977 - 1997, Plate Boundaries in Yellow

USGS National Earthquake Information Center

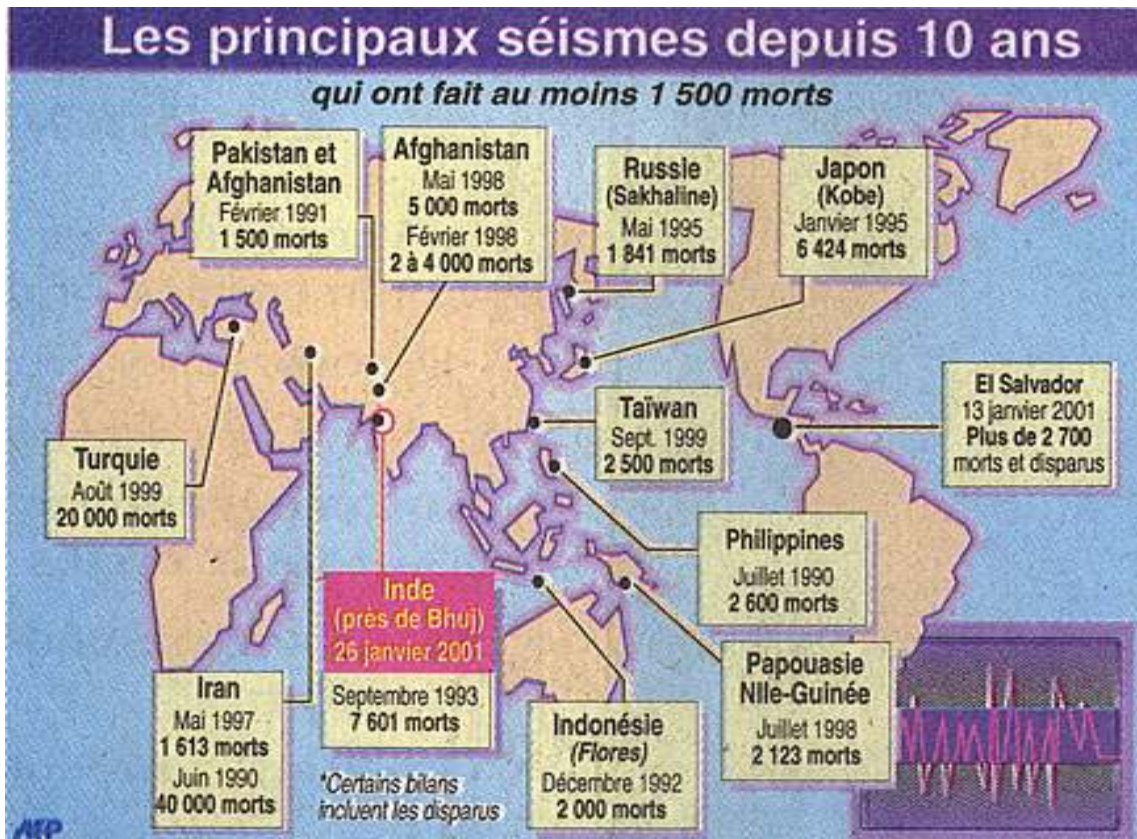
La situazione è speculare al Giappone



# Dorsali: terremoti superficiali



+ tsunami 2004 > 100.000 morti



indietro