



ATTENTION!!!

27

1. The only exception will be for Free Shots awarded within 2 metres of the goal: Defenders (including the goal keeper) will be allowed to block the free shot after release, but before it has travelled 1 metre from the point of release, with a stationary paddle or stationary hand(s).
2. The attacker must be stationary to take the throw so they cannot move forward- stops the tactic of a team mates pushing the player taking the throw in closer.
 - (a) if happen call illegal kayak foul



DELIBERATE FOUL



1. All DELIBERATE fouls must be sanctioned with GC, without exception!
2. If referees plays advantage must show very clearly the signals (2-3 seconds) to players, table, spectators.
3. If the offending player is nearby the referee will communicate clearly this sequence: "N. OF PLAYER + GREEN CARD + PLAY ON"; this will prevent the player forget the reason for the GC that could be given in minutes. Moreover will prevent all player to commit fouls



what is and **ADVANTAGE** ?

1. If the player who is fouled can take a shot at goal
2. If the player who is fouled can make a good pass
3. If the foul is away from the ball and the advantage permits to the team to take a shot or make a good pass



DANGEROUS FOUL



1. All DANGEROUS fouls must be sanctioned with GC, without exception!
2. If you play advantage be very clear with your signal and call so all players know you are playing advantage and then make sure you award the GREEN card after the play has completed.



DELIBERATE + DANGEROUS FOUL



1. All DELIBERATE + DANGEROUS fouls must be sanctioned with YC, without exception!
2. If you play advantage be very clear with your signal and call so all players know you are playing advantage and then make sure you award the YELLOW card after the play has completed.



GREEN CARD



1. Referees will show the card to the player from a distance, there is no need to call the player to him.
2. Communicate clearly to table the sequence: "TEAM + N. PLAYER + KIND OF FOUL"



TAKING SHOT/THROW - DEFENDING TEAM ALL AREA

1. Throwing the ball away, or deliberately obstructing the opposition to delay a quick restart after an infringement, or attempting to play the ball before it has travelled 1 metre or changed possession is a foul! If it happens:
 - (a) GC if the infringement didn't impede particular actions such as corner throw, sideline throw or free shot outside 6m area
 - (b) YC + GPS if the infringement impeded a near-certain goal while the goal is not defended



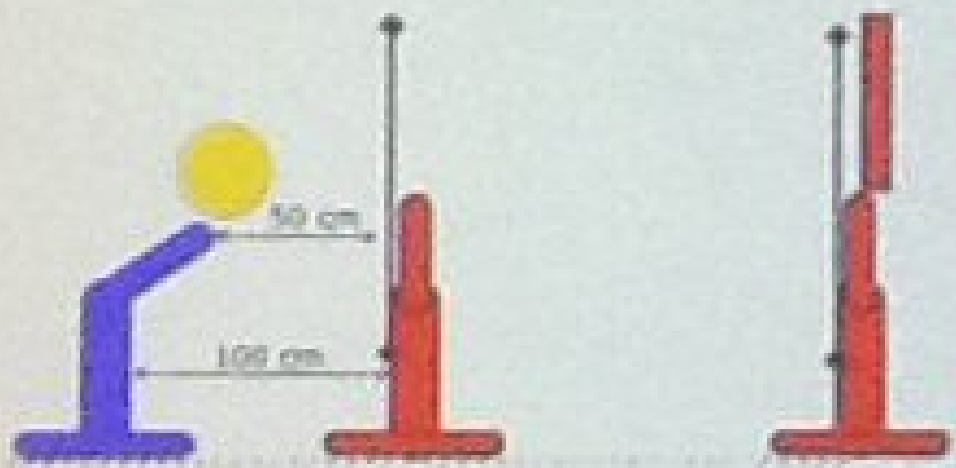
TAKING SHOT – DEFENDING TEAM INSIDE 6 MT

1. Defensive player that prevents the shooter taking up his position must be sanctioned with GC, without exception!
2. If a player of the same team commits the same foul the team must be sanctioned with TW, without exception + GPS!
3. If a player of the same team commits the same foul after a TW must be sanctioned with YC, without exception + GPS!
4. If a player deliberately blocks the ball before it has travels one metre or changes possession or tackles the player taking the throw before the ball is back in play award a GPS.

Note stationary paddle is ok close to goal and can move sideways - but any action towards the ball deemed deliberate.

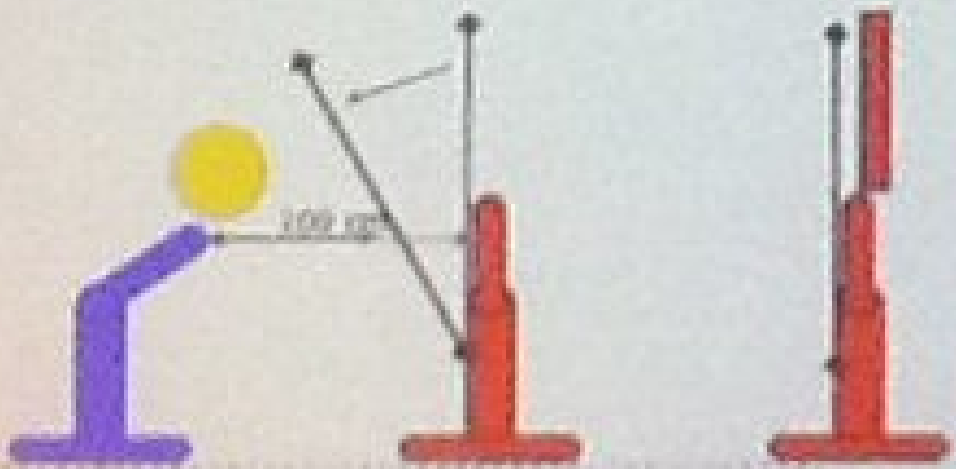


SITUATION: TIME OUT, FREE SHOT INSIDE 6m.



A

DEFENSIVE PLAYER POSITION HIS BODY AND HEADLINE IN FRONT OF SHOOTER. THE BALL TRAVELS LESS THAN 1M. AFTER RELEASE THE HAND.



B

DEFENSIVE PLAYER POSITION HIS BODY AND HEADLINE PERMITTING THE BALL TRAVELS 1M. AFTER RELEASE THE HAND.



SOLUTIONS

40

1. Especially when is TO and all players have the opportunity to position themselves at their best, we MUST call GPS if they don't permit the ball travel 1mt.
2. If shooters takes a position close to firm defender (firm paddle, firm kayak) no fouls.
3. If defender moves his kayak close to shooter, play with firm paddle and ball cannot travel 1mt, the defender is responsible for it: GC + GPS
4. If defender moves his kayak close to shooter and moves the paddle to the ball and ball cannot travel 1mt, the defender is responsible for it: GC (consider also YC if high grade of danger) + GPS

