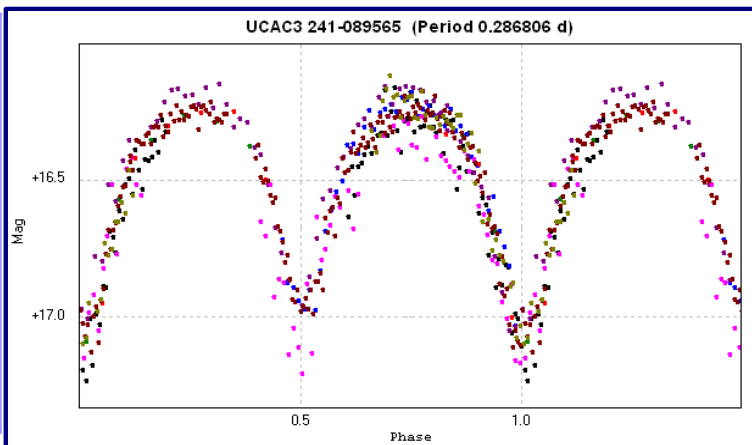


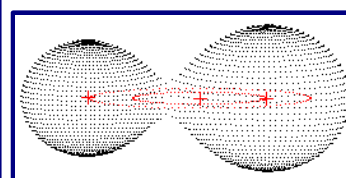
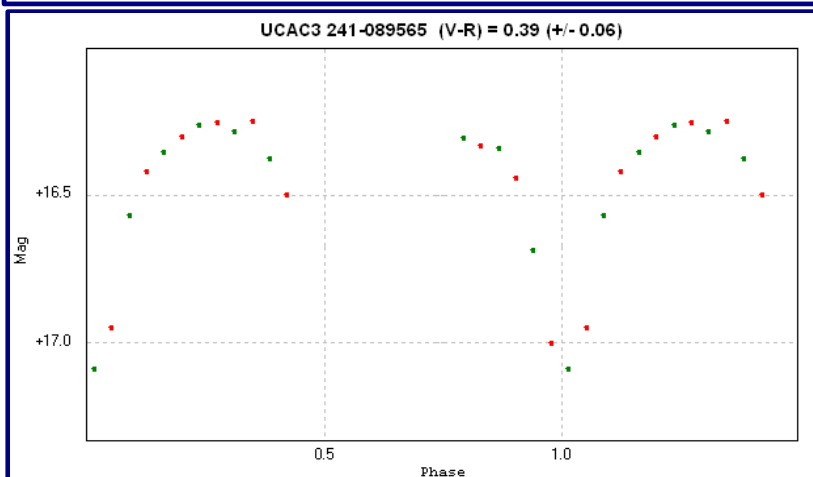
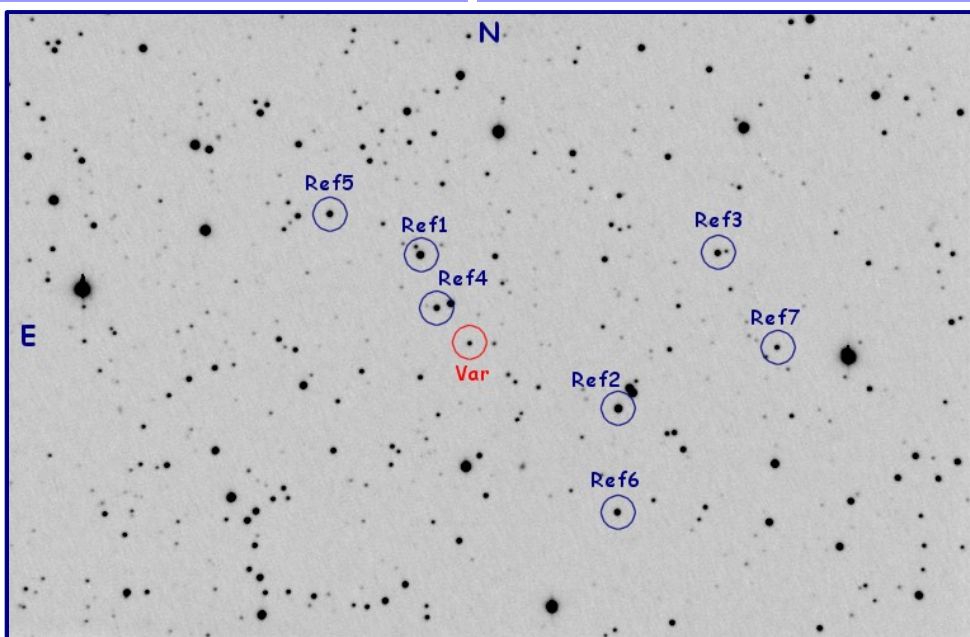
NEW VAR IN GEMINI (Discovered observing asteroid BRABANTIA)

MyRef	V1Gem
VSX name	VSX J073000.3+300150
AAVSO – AUID	
GSC2.2	N230102014531
UCAC3	241-089565
CMC14	073000.3+300150
2MASS	J07300031+3001503
RA J2000	07 30 00.300
DEC J2000	+30 01 50.48
Var Type	EW
Spectral Type	G5-G8V
Period (d)	0.286806 (+/- 0.00003)
Epoch (HJD)	2455596.397623 (+/- 0.002013)
Maximum (V)	16.23 (+/- 0.04)
Primary minima (V)	17.08 (+/- 0.04)
Secondary minima (V)	16.99 (+/- 0.04)
MaxAmplitude (V)	0.85 (+/- 0.06)
Color Index avg (V-Rc)	0.39 (+/- 0.06)



Reference Stars

ID	RA DEC J2000	CMC14	r'	J	K	V	R	(V-R)
V1Gem	07 30 00.314 +30 01 50.42	073000.3+300150	16.454	15.460	14.851	16.749	16.234	0.515
Ref1	07 30 05.215 +30 03 44.36	073005.2+300344	13.915	12.795	12.424	14.074	13.695	0.379
Ref2	07 29 45.518 +30 00 25.83	072945.5+300025	13.600	12.707	12.428	13.703	13.380	0.323
Ref3	07 29 35.628 +30 03 47.28	072935.6+300347	14.942	13.889	13.468	15.127	14.722	0.405
Ref4	07 30 03.571 +30 02 36.04	073003.5+300236	14.956	13.887	13.502	15.118	14.736	0.382
Ref5	07 30 14.234 +30 04 37.35	073014.2+300437	14.772	13.646	13.161	14.998	14.552	0.446
Ref6	07 29 45.614 +29 58 11.99	072945.6+295811	14.603	13.612	13.155	14.813	14.383	0.430
Ref7	07 29 29.708 +30 01 45.17	072929.7+300145	15.873	14.819	14.401	16.051	15.653	0.398



Binary Maker 3D Model

