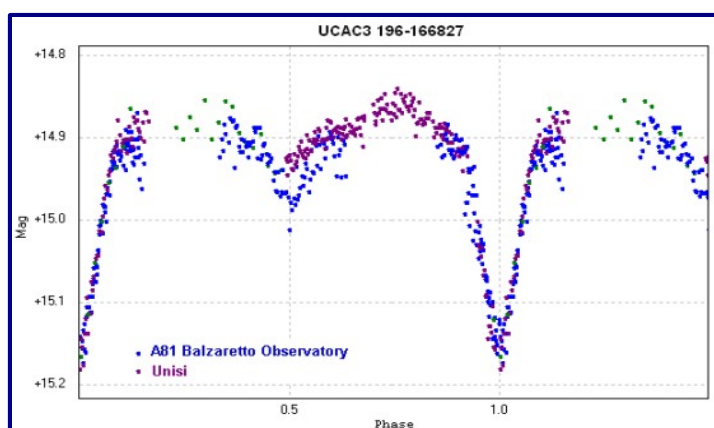
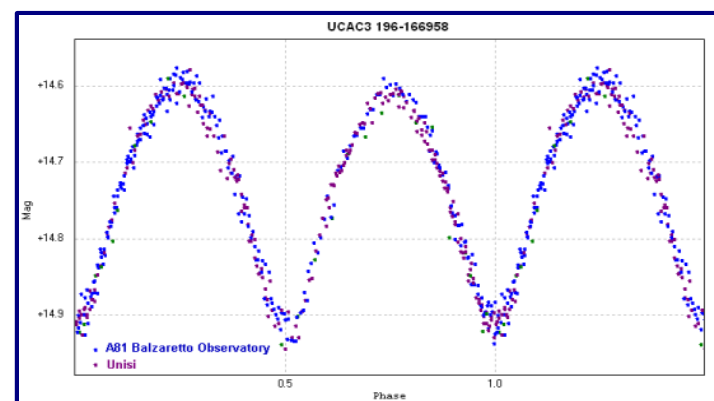


FOUR NEW ECLIPSING VARIABLE STARS DISCOVERED in OPHIUCHUS CONSTELLATION

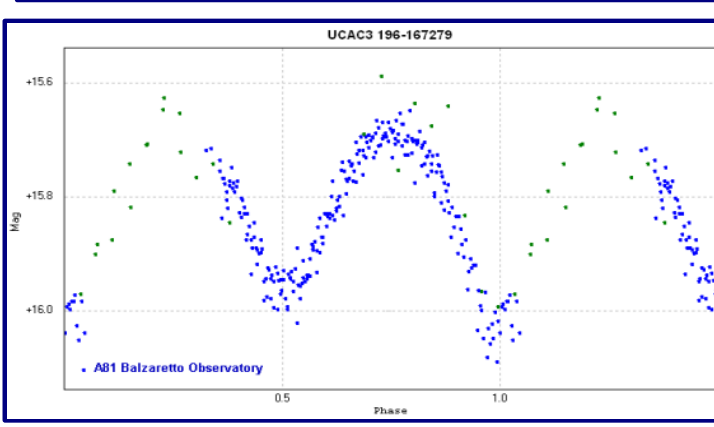
MyRef	V66
VSX name	VSX J180755.6+074711
AAVSO – AUID	000-BJV-953
GSC2.2	N020023339630
UCAC3	196-166827
CMC14	180755.6+074711
2MASS	J18075569+0747117
1RXS	J180755.7+074717
RA J2000	18 07 55.69
DEC J2000	+07 47 11.8
Var Type	EA – RS CVn
Spectral Type	F5/F6V
Period (d)	0.861209 ± 0.00011 d
Epoch (HJD)	2455381.448739 ± 0.00103
Maximum (V)	14.87 mag ± 0.01
Primary minima (V)	15.15 mag ± 0.01
Secondary minima (V)	14.97 mag ± 0.02
MaxAmplitude (V)	0.28 mag ± 0.01
Color Index avg (V-Rc)	0.26 mag ± 0.05



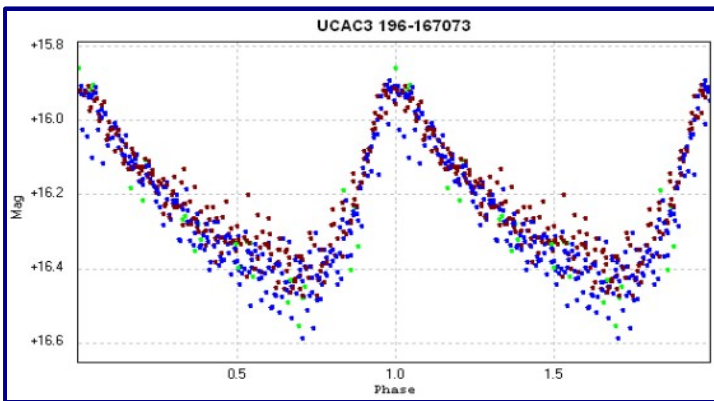
MyRef	V107
VSX name	VSX J180805.9+074027
AAVSO – AUID	000-BJV-954
GSC2.2	N020023335570
UCAC3	196-166958
CMC14	180805.9+074027
2MASS	J18080597+0740273
RA J2000	18 08 05.97
DEC J2000	+07 40 27.4
Var Type	EW
Spectral Type	G5/G8V
Period (d)	0.360779 ± 0.00009 d
Epoch (HJD)	2455383.552104 ± 0.00165
Maximum (V)	14.60 mag ± 0.01
Minima I - II (V)	14.91 mag ± 0.01
MaxAmplitude (V)	0.31 mag ± 0.02
Color Index avg (V-Rc)	0.39 mag ± 0.05



MyRef	V228
VSX name	VSX J180832.9+074148
AAVSO – AUID	000-BJV-955
GSC2.2	N020023336427
UCAC3	196-167279
CMC14	180832.9+074148
2MASS	J18083292+0741486
RA J2000	18 08 32.93
DEC J2000	+07 41 48.6
Var Type	EW
Spectral Type	G5V
Period (d)	0.373738 ± 0.00023 d
Epoch (HJD)	2455381.432426 ± 0.00383
Maximum (V)	15.66 mag ± 0.01
Primary minima (V)	16.01 mag ± 0.02
Secondary minima (V)	15.94 mag ± 0.01
MaxAmplitude (V)	0.35 mag ± 0.02
Color Index avg (V-Rc)	0.36 ± 0.05

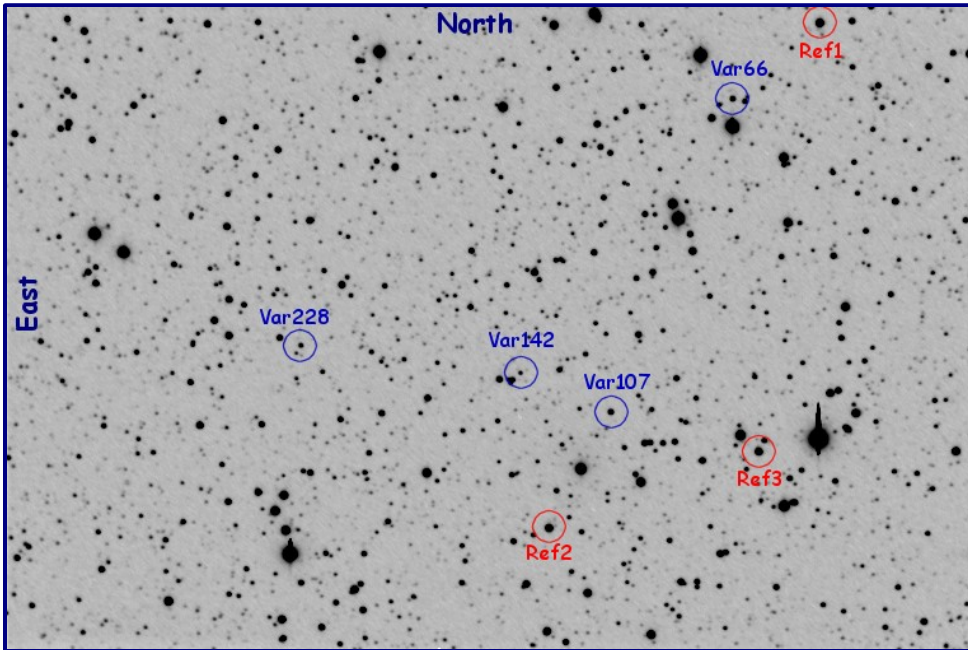


MyRef	V142
VSX name	VSX J180813.9+074116
AAVSO – AUID	000-BJW-505
GSC2.2	N020023336093
UCAC3	196-167073
CMC14	180813.8+074116
2MASS	J18081384+0741164
RA J2000	18 08 13.86
DEC J2000	+07 41 16.4
Var Type	SXPHE – HADS
Spectral Type	A7-F5
Period (d)	0.087227 ± 0.00001d
Epoch (HJD)	2455381.416076 ± 0.0004
Maximum (V)	15.92 mag ± 0.02
Minima (V)	16.42 mag ± 0.04
MaxAmplitude (V)	0.50 mag ± 0.05
Color Index avg (V-Rc)	0.21 mag ± 0.05



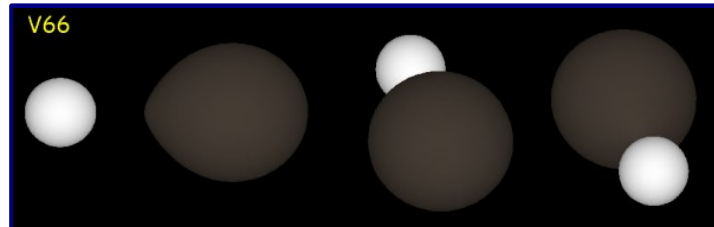
NewVars Reference Data (A81 Balzarotto Observatory)

ID	RA DEC J2000	CMC14	V	R	(V-R)
Ref1	18 07 48.214 +07 48 50.28	180748.2+074850	12.902	12.542	0.360
Ref2	18 08 11.211 +07 37 56.96	180811.2+073756	13.169	12.782	0.387
Ref3	18 07 53.114 +07 39 38.29	180753.1+073938	13.257	12.873	0.384

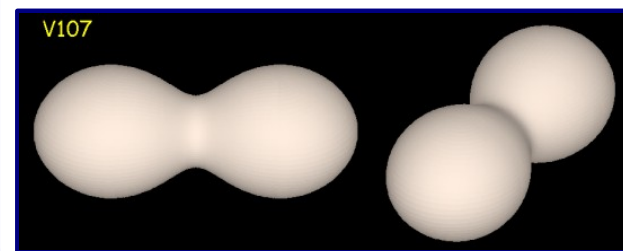


Derived Data

MyRef	V66
Star 1	
Temperature	6500 K
Mass	1.2 solar mass
Radius	1.2 solar radii
Star 2	
Temperature	4700 K
Mass	2.2 solar mass
Radius	2.4 solar radii
Semimajor Axis	5.7 solar radii
Orbital Inclination	65°



MyRef	V107
Star 1	
Temperature	5500 K
Mass	1 solar mass
Radius	0.9 solar radii
Star 2	
Temperature	5500 K
Mass	1 solar mass
Radius	0.9 solar radii
Semimajor Axis	2.7 solar radii
Orbital Inclination	57°



MyRef	V228
Star 1	
Temperature	5700 K
Mass	1 solar mass
Radius	0.9 solar radii
Star 2	
Temperature	5200 K
Mass	0.8 solar mass
Radius	0.9 solar radii
Semimajor Axis	2.7 solar radii
Orbital Inclination	57°

